



FRONT ELEVATION

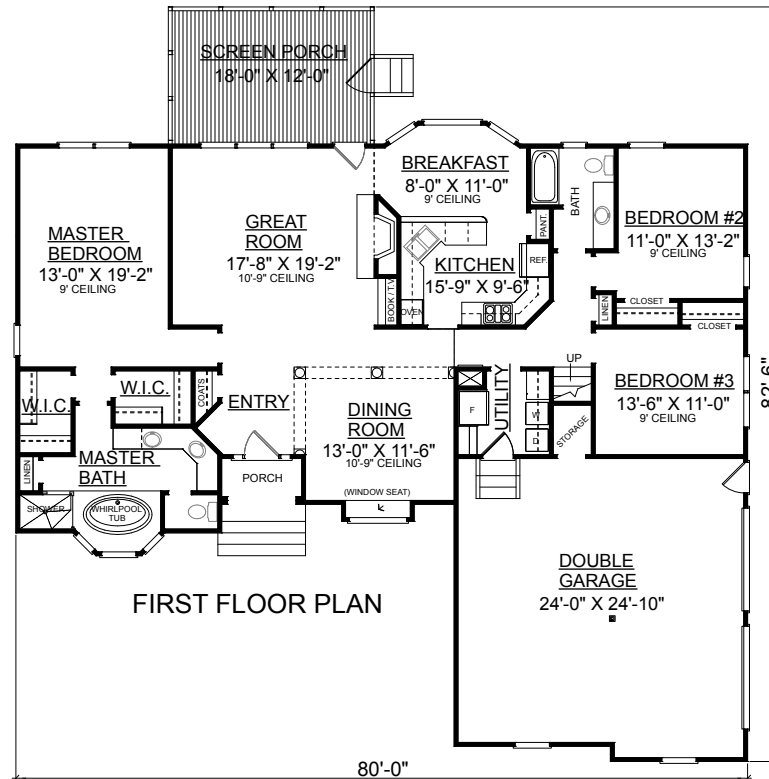


REAR ELEVATION

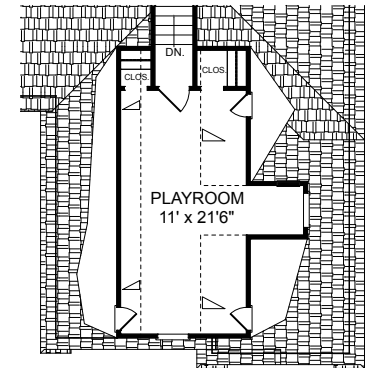
OVERVIEW

- TOTAL: 1946+ Sq.Ft.
- BEDROOMS: 3
- BATHROOMS: 2
- Crawl Space Construction
- 9' Ceiling Heights Throughout with 10'-9" Ceilings in Foyer, Dining Room and Great Room
- Master Bedroom Boasts 2 Walk-In Closets Complete with Whirlpool Tub
- Walk-Thru Utility Room Leads into Double Garage
- Future Playroom Above Garage
- Large Screen Porch Accessible From Great Room
- Inviting Covered Front Entry
- Side Entry Garage with Abundant Storage Space

First Floor	1946 Sq. Ft.
Playroom	324 Sq. Ft.
Garage	596 Sq. Ft.
Screen Porch	216 Sq. Ft.
Overall Height	23'-6" +/-



FIRST FLOOR PLAN



PLAYROOM FLOOR PLAN