



**FRONT ELEVATION**

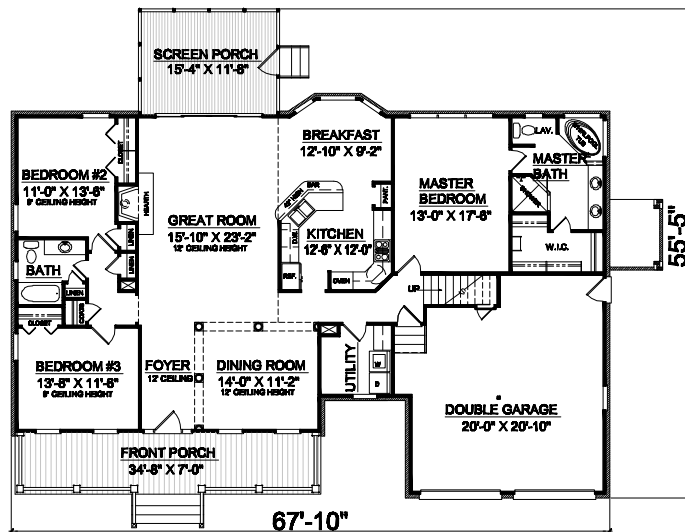


**REAR ELEVATION**

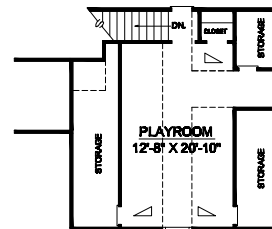
**OVERVIEW**

**TOTAL:** 1987+ Sq. Ft.  
**BEDROOMS:** 3  
**BATHROOMS:** 2

- 9' Ceiling Heights Throughout with 12' Ceilings Located in Foyer, Dining Room, and Great Room
- Open Plan Great for Entertaining Guests
- Private Guest Bedrooms with Shared Hall Bath
- Spacious Private Master Bedroom Boasts Bath with Large Walk-In Closet, Dual Sink Vanity, and Whirlpool Tub
- Elegant Columns Surrounding Formal Dining Room
- Cozy Playroom Located Above Double Garage



**FIRST FLOOR PLAN**



**PLAYROOM PLAN**

First Floor	1987 Sq. Ft.
Playroom	373 Sq. Ft.
Garage	555 Sq. Ft.
Screen Porch	192 Sq. Ft.
Front Porch	243 Sq. Ft.
Overall Height	24'-4" +/-