



FRONT ELEVATION

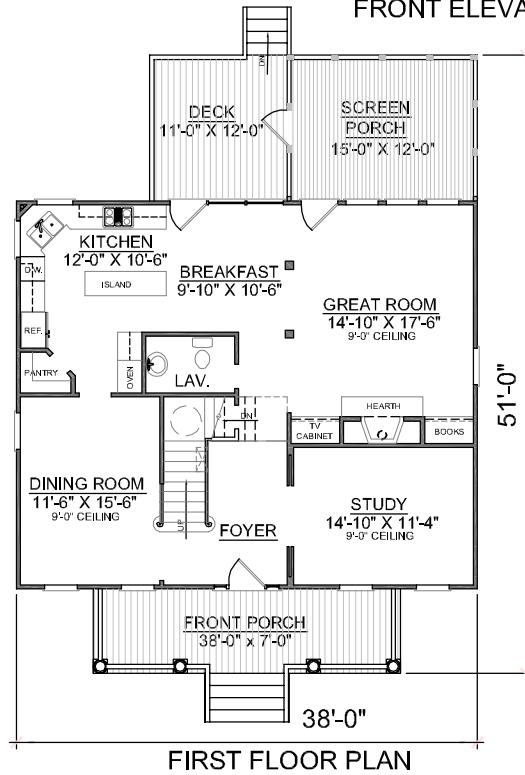
OVERVIEW

- TOTAL: 2281 Sq. Ft.
BEDROOMS: 3
BATHROOMS: 2.5
- Spacious Elegant Plan with 9" Ceilings Throughout
 - Impressive Open Foyer Greets Guests and Adjoins Formal Dining Room and Study
 - Bright and Sunny Breakfast Area Opens Into Kitchen and Great Room
 - Second Floor Master Bedroom with Pampering Bath and Roomy Walk-In Closet
 - Convenient Second Floor Laundry Room
 - Two Spacious Second Floor Bedrooms with Hall Bath
 - Private Upper Deck Off Master Bedroom

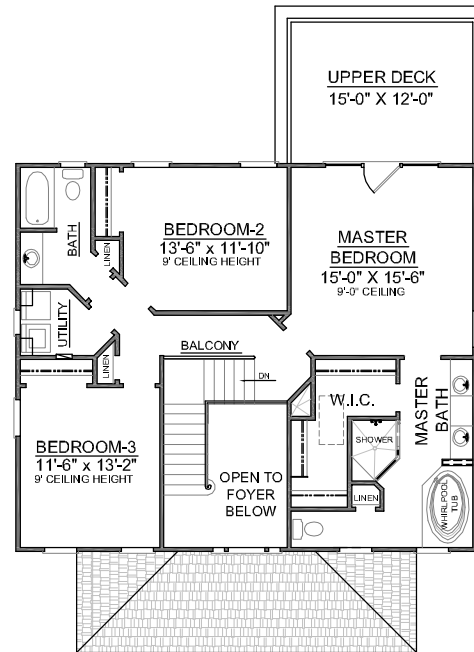
Please see Plan# 2281-A in the Elevated section for alternate elevation.



REAR ELEVATION



FIRST FLOOR PLAN



SECOND FLOOR PLAN

First Floor	1216	Sq. Ft.
Second Floor	1065	Sq. Ft.
Total Heated	2281	Sq. Ft.
Garage	---	Sq. Ft.
Lower Deck	136	Sq. Ft.
Upper Deck	188	Sq. Ft.
Screen Porch	188	Sq. Ft.
Front Porch	177	Sq. Ft.
Overall Height	31'-9"	

Detached Garage Plans available