

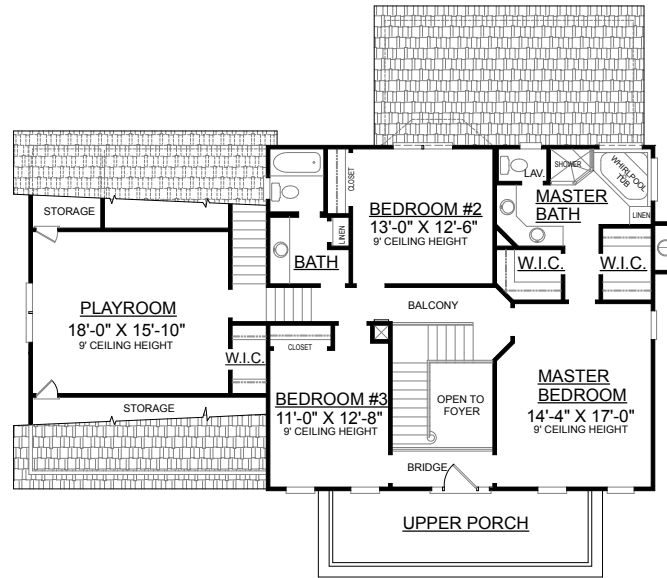
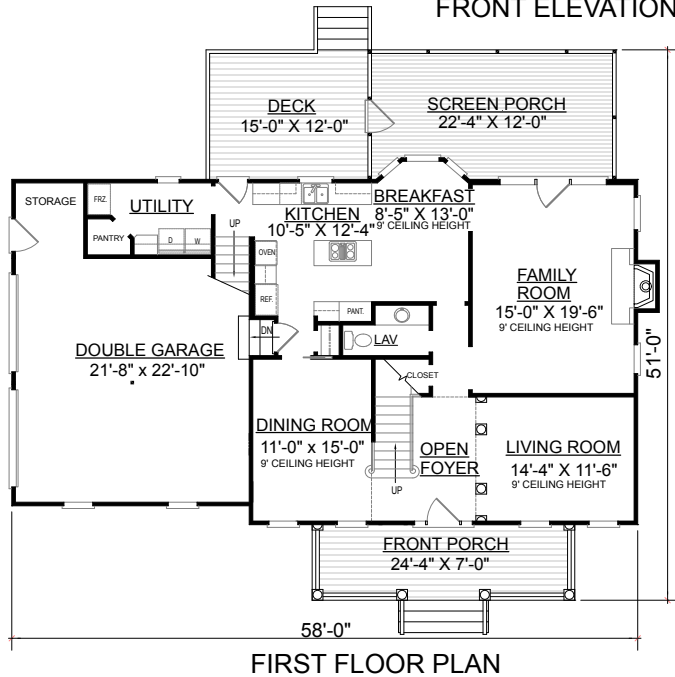


REAR ELEVATION

OVERVIEW

- TOTAL:** 2351+ Sq. Ft.
BEDROOMS: 3
BATHROOMS: 2.5
- Plan Includes 9' Ceilings Throughout
 - Crawl Space Construction
 - Formal Living Room and Dining Room
 - Spacious Kitchen with Island Adjoins Sunny Breakfast Area
 - Secluded Playroom Located Over Double Garage
 - Master Suite Boasts 2 Walk-In Closets, Dual Sink Vanity, and Relaxing Whirlpool Tub
 - Unique Bridge Between Master Suite and Bedroom #3 Opens to Foyer Below, and Accesses Second Floor Porch

FRONT ELEVATION



First Floor	1269 Sq. Ft.
Second Floor	1082 Sq. Ft.
Playroom	348 Sq. Ft.
Garage	566 Sq. Ft.
Deck	180 Sq. Ft.
Screen Porch	276 Sq. Ft.
Front Porch	170 Sq. Ft.
Upper Porch	170 Sq. Ft.
Overall Height	34'-4" +/-

Plan No.

2351-348