



FRONT ELEVATION

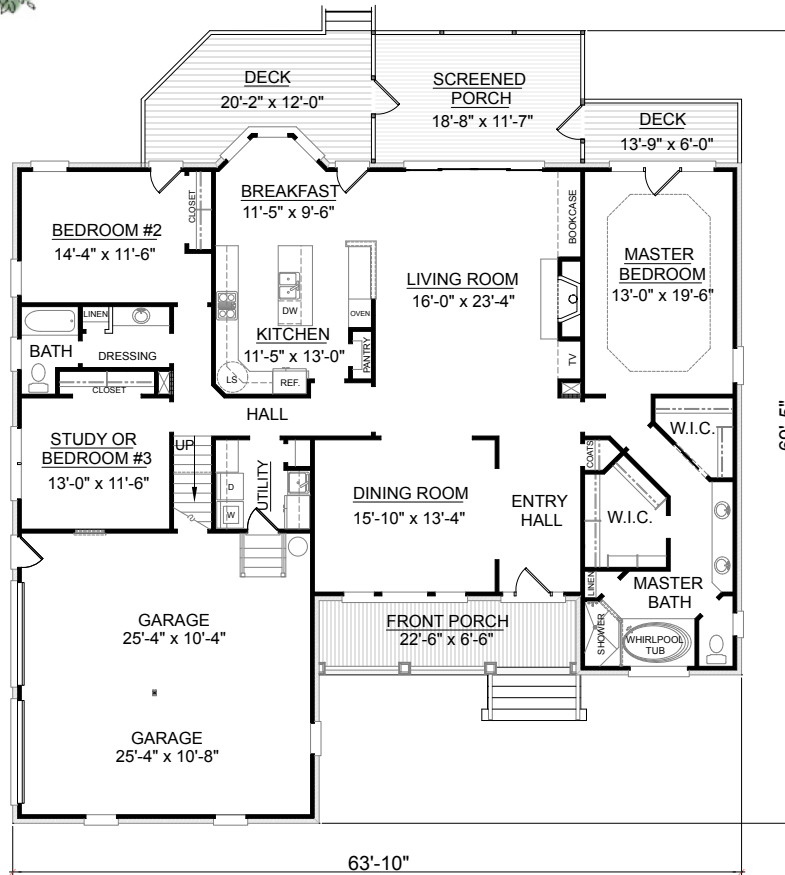


REAR ELEVATION

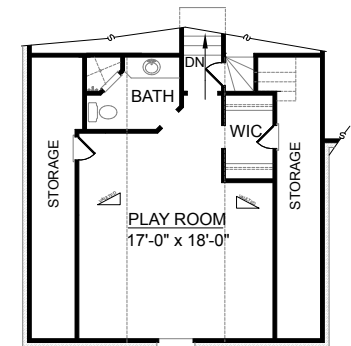
OVERVIEW

- TOTAL: 2381+ Sq. Ft.
 BEDROOMS: 3
 BATHROOMS: 3
 -9' Ceiling Heights Throughout Main Floor
 -Crawl Space Construction
 -Spacious Gourmet Kitchen Including Island and Pantry
 Overlooks Cozy Great Room
 -Roomy First Floor Master Suite
 -Abundant Attic Storage
 -Brick Exterior
 -Rear Elevation Windows Great for Striking Views

First Floor	2381	Sq. Ft.
Second Floor	428	Sq. Ft.
Finished Ground Floor	----	Sq. Ft.
Garage	677	Sq. Ft.
Deck	306	Sq. Ft.
Screen Porch	216	Sq. Ft.
Front Porch	161	Sq. Ft.
Overall Height	26'-0"	+/-



SECOND FLOOR PLAN



FIRST FLOOR PLAN

Plan No.

2381-428