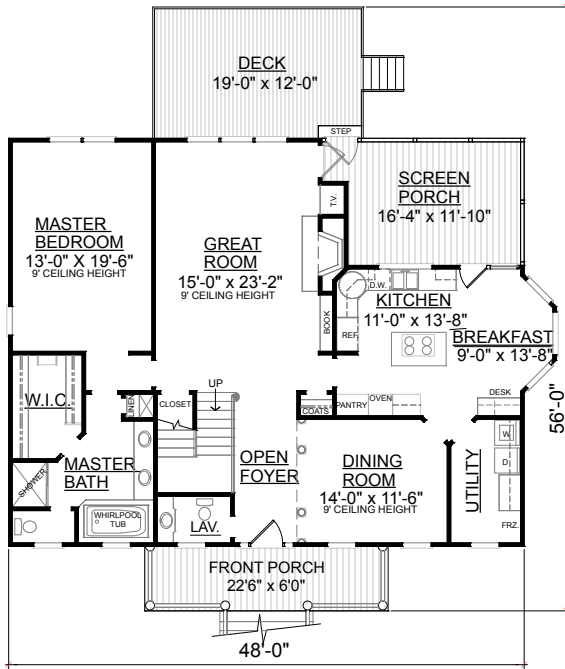


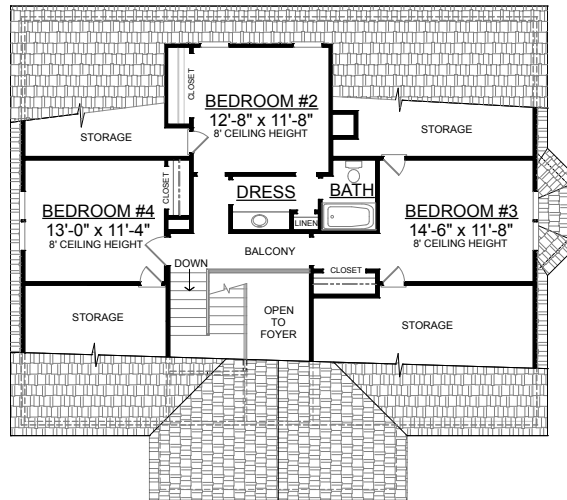
REAR ELEVATION

OVERVIEW

- TOTAL:** 2383 Sq. Ft.
BEDROOMS: 4
BATHROOMS: 2.5
- 9' Ceiling Heights Throughout Main Floor
 - Crawl Space Construction
 - Spacious First Floor Master Bedroom with Walk-In Closet
Dual Sink Vanity, and Whirlpool Tub
 - Three Bedrooms on Second Floor Share Hall Bath
 - Abundant Attic Storage
 - Detached Garage Plans Available
 - Inviting Screen Porch with Access From Great Room and Sunny Breakfast Area



FIRST FLOOR PLAN



SECOND FLOOR PLAN

Plan No.
2383

First Floor	1618	Sq. Ft.
Second Floor	765	Sq. Ft.
Finished Ground Floor	----	Sq. Ft.
Garage	----	Sq. Ft.
Deck	264	Sq. Ft.
Screen Porch	222	Sq. Ft.
Front Porch	136	Sq. Ft.
Overall Height	24'-3"	