



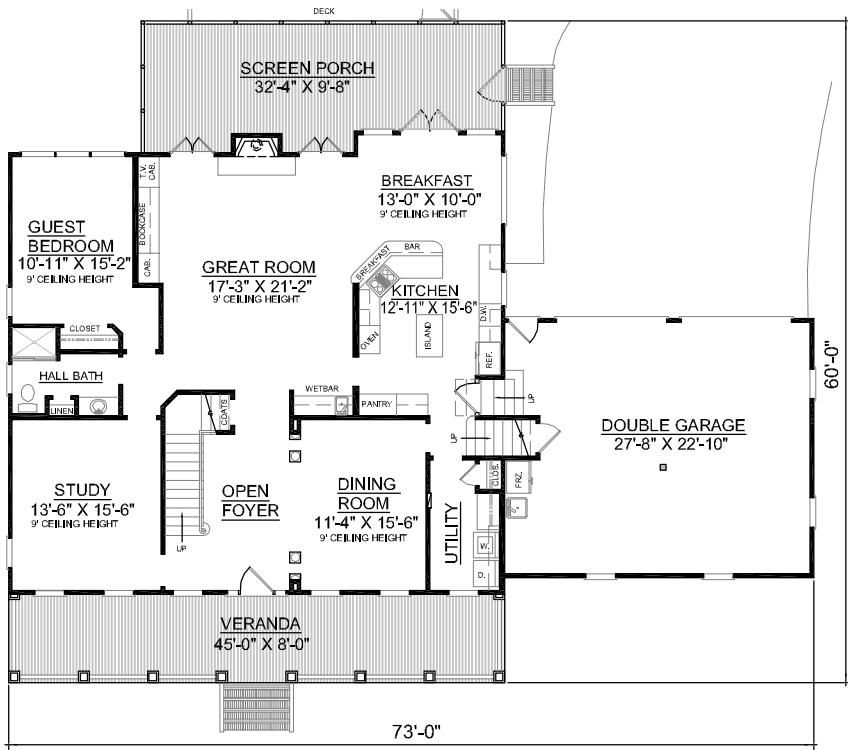
FRONT ELEVATION

OVERVIEW

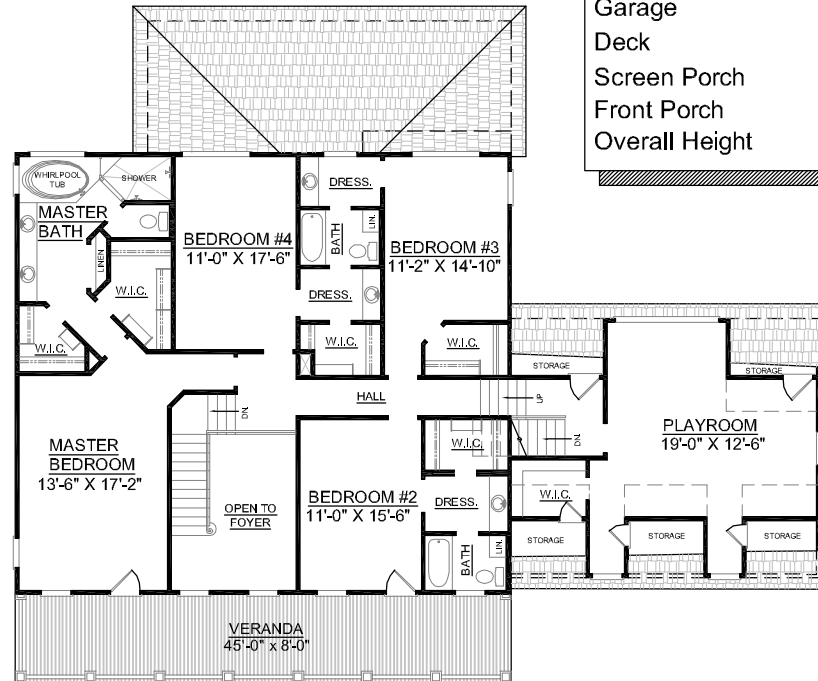
TOTAL: 3678 Sq. Ft.
 BEDROOMS: 5
 BATHROOMS: 4
 -9' Ceiling Heights Throughout First Floor
 -Crawl Space Construction
 -Charming Full Length Two Story Front Porches
 -Impressive Two Story Foyer to Welcome Guests
 -Private First Floor Guest Bedroom
 -Spacious Great Room with Cozy Fireplace Adjoins Screen Porch
 -Deluxe Kitchen with Island and Bar Opens to Breakfast Area
 -Second Floor Master Suite Boasts 2 Walk-In Closets, Dual Sink Vanity, Separate Shower, and Whirlpool Tub
 Additional Playroom with Large Walk-In Closet Above Garage



REAR ELEVATION



FIRST FLOOR PLAN



SECOND FLOOR PLAN

First Floor	1808	Sq. Ft.
Second Floor	1870	Sq. Ft.
Playroom	396	Sq. Ft.
Garage	685	Sq. Ft.
Deck	294	Sq. Ft.
Screen Porch	361	Sq. Ft.
Front Porch	360	Sq. Ft.
Overall Height	36'-0"	