

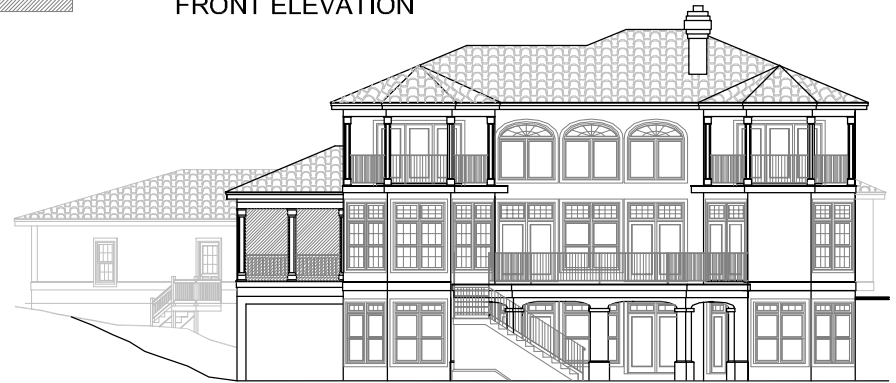
GROUND FLOOR PLAN

OVERVIEW

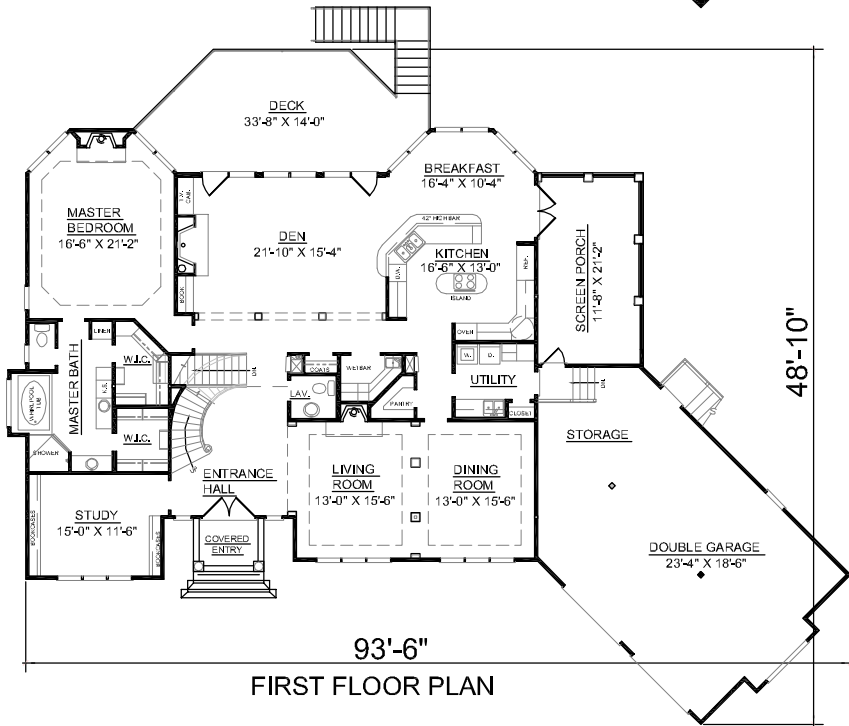
TOTAL: 4291+ Sq. Ft.
 BEDROOMS: 5+
 BATHROOMS: 3.5+
 -10' Ceiling on First Floor with 9' Ceilings on Second, Basement Ceiling is at 9'6".
 -Striking Curved Staircase Greets Guests in Two Story Hall
 -Formal Living Room and Dining Room Separated by Decorative Columns and Tray Ceilings
 -Spacious Den Features Incredible Two-Story Dramatic Arch-Topped Windows Infusing the Home with Light and Space
 -Handsome Kitchen Boasts Cooktop Island and Ample Counterspace
 -Second Floor Bedrooms Each With "Jack and Jill" Bath
 -Exquisite Pampering First Floor Master Bedroom Suite
 -Additional Versatile Spaces and Bath Enhance Ground Floor
 -Terra Cotta Roof Boasts Wonderful Curb Appeal



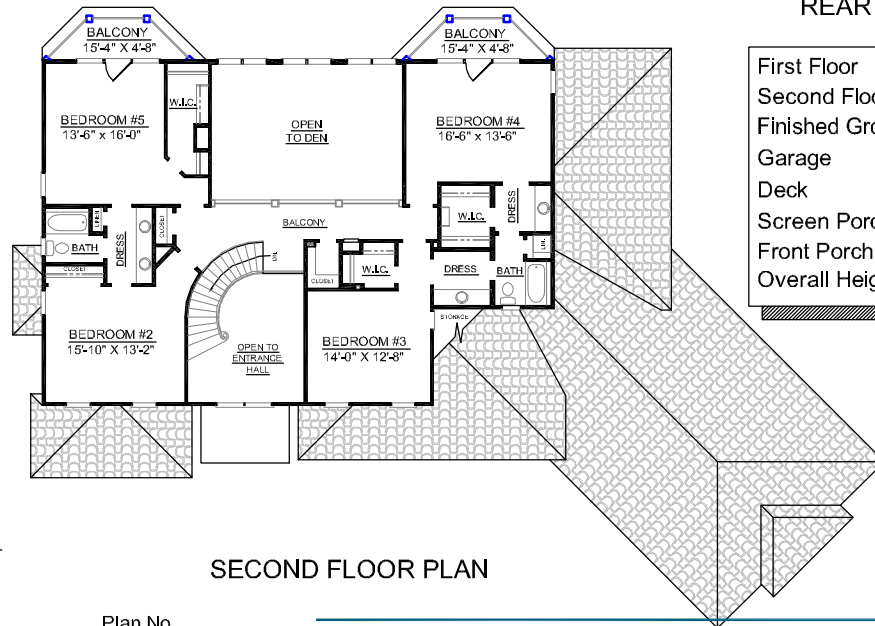
FRONT ELEVATION



REAR ELEVATION



FIRST FLOOR PLAN



SECOND FLOOR PLAN

First Floor	2649	Sq. Ft.
Second Floor	1572	Sq. Ft.
Finished Ground Floor	2011	Sq. Ft.
Garage	1489	Sq. Ft.
Deck	539	Sq. Ft.
Screen Porch	324	Sq. Ft.
Front Porch	320	Sq. Ft.
Overall Height	39'-9"	