



FRONT ELEVATION

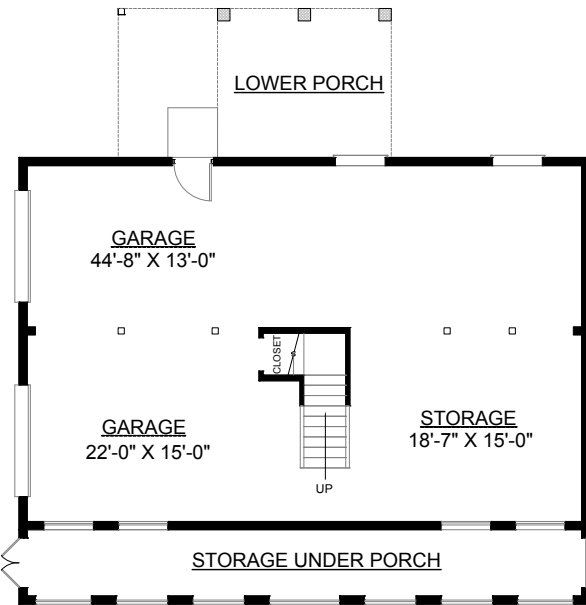
OVERVIEW

TOTAL: 1919 SQ. FT.
 BEDROOMS: 3
 BATHROOMS: 2.5
 -9' Ceiling Heights Throughout First Floor; 8' on Second Floor
 -Impressive Vaulted Ceiling in Foyer
 -First Floor Master Suite Boasts Walk-In Closet and Spacious Bath with Whirlpool Tub
 -Formal Dining Room
 -Cozy Screen Porch with Convenient Pass-Thru to Kitchen
 -Abundant Attic Storage Space
 -2 Bay Side Entry Garage
 -See Plan #2103 and #2143 For Similar Layouts with 4 Bedrooms and/or Alternate Elevations

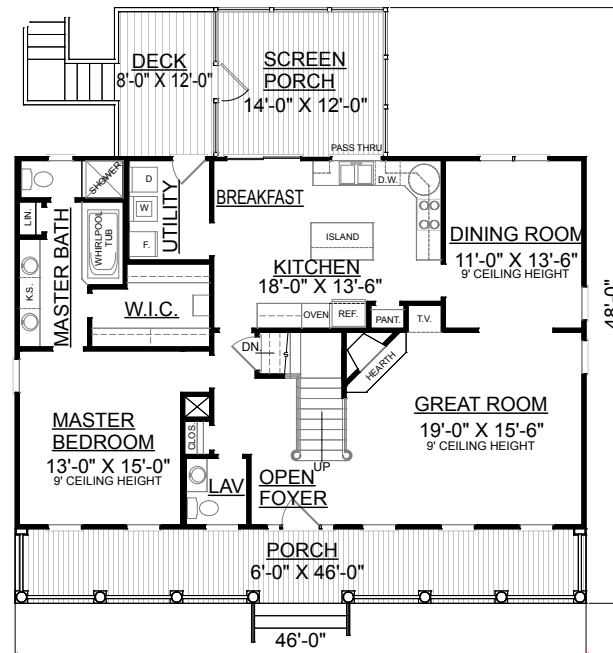
First Floor	1380	Sq. Ft.
Second Floor	539	Sq. Ft.
Finished Ground Floor	-----	Sq. Ft.
Garage	1380	Sq. Ft.
Deck	96	Sq. Ft.
Screen Porch	168	Sq. Ft.
Front Porch	276	Sq. Ft.
Overall Height	32'-3"	



REAR ELEVATION

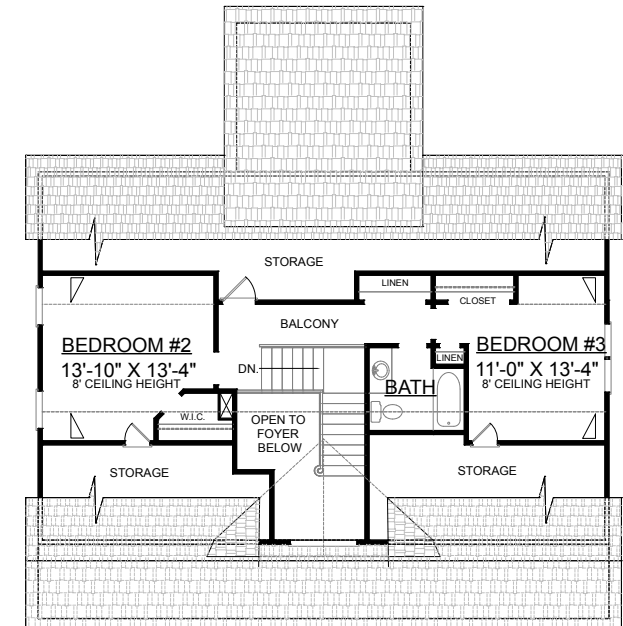


GROUND FLOOR PLAN



FIRST FLOOR PLAN
Plan No.

1919



SECOND FLOOR PLAN