



FRONT ELEVATION

OVERVIEW

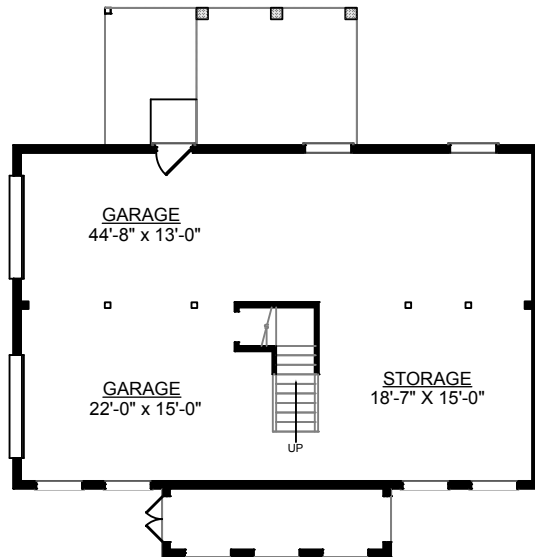
TOTAL: 2143 SQ. FT.
BEDROOMS: 4
BATHROOMS: 2.5

- Large Gourmet Kitchen with Center Island
- Convenient Pass-Thru from Kitchen to Screen Porch
- Inviting Barrel Vaulted Front Porch Leads Into Open Foyer
- 2 Bay Side Entry Garage Under Home
- For Similar Plans, See #1919 and #2103 for Alternate Exteriors and Second Floor Layouts
- 9' Ceilings on First Floor, 8' on Second Floor

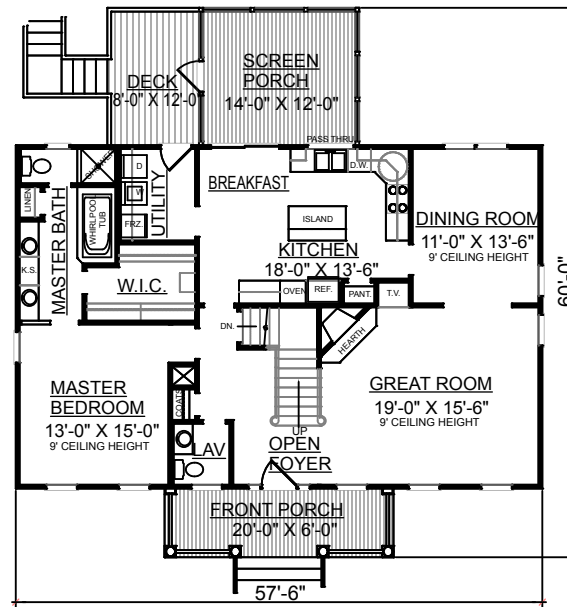
First Floor(9')	1380	Sq. Ft.
Second Floor(8')	763	Sq. Ft.
Finished Ground Floor	----	Sq. Ft.
Garage	1380	Sq. Ft.
Deck	96	Sq. Ft.
Screen Porch	168	Sq. Ft.
Front Porch	120	Sq. Ft.
Overall Height	32'-7"	



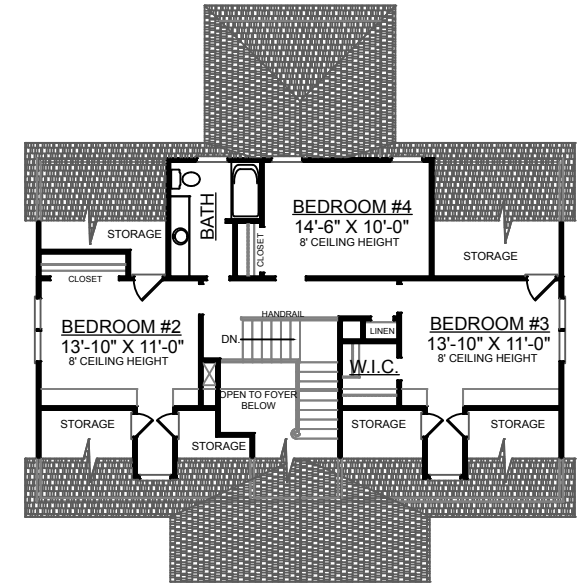
REAR ELEVATION



GROUND FLOOR PLAN



FIRST FLOOR PLAN



SECOND FLOOR PLAN