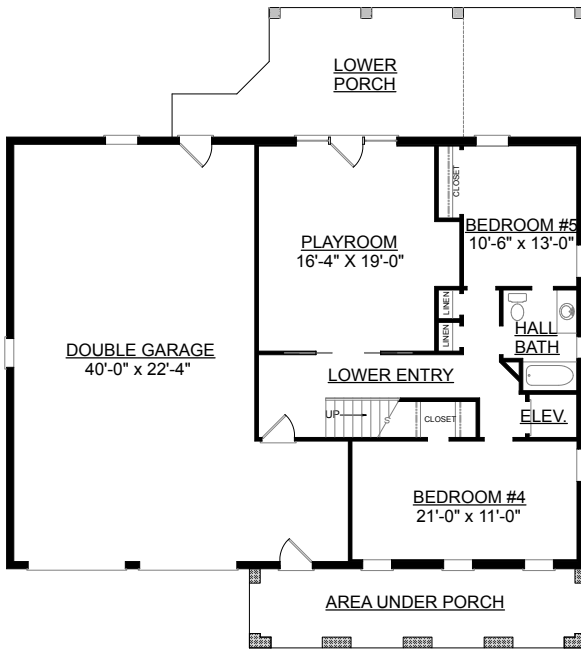


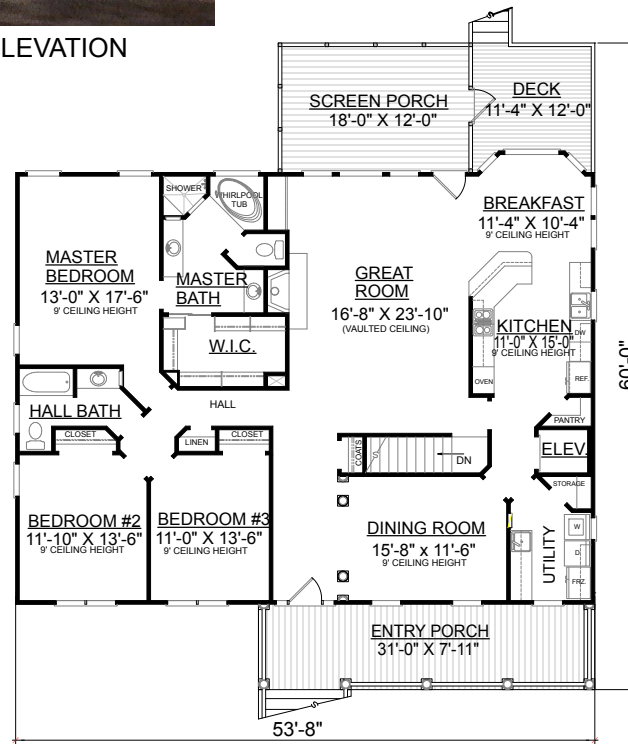


REAR ELEVATION

FRONT ELEVATION



GROUND FLOOR PLAN



FIRST FLOOR PLAN

OVERVIEW

TOTAL: 2164+ Sq. Ft.
BEDROOMS: 3+
BATHROOMS: 2+
 -Great Room has Impressive Vaulted Ceiling and Opens into Sunny Breakfast Area and Kitchen
 -Formal Dining Room with Elegant Decorative Columns
 -Double Front Entry Garage
 -Future Elevator Space
 -2 Additional Bedrooms, Bath, and Playroom Possible on Ground Floor
 -9' Ceilings Throughout

First Floor (9')	2164 Sq. Ft.
Finished Ground Floor	1124 Sq. Ft.
Garage	1022 Sq. Ft.
Deck	120 Sq. Ft.
Screen Porch	216 Sq. Ft.
Front Porch	242 Sq. Ft.
Overall Height	29'-8"