



FRONT ELEVATION

**OVERVIEW**

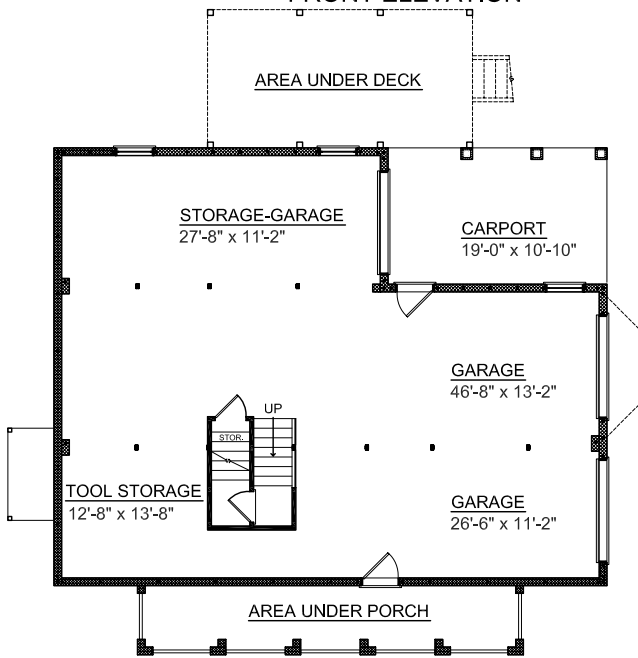
TOTAL: 2250 Sq. Ft.  
 BEDROOMS: 3  
 BATHROOMS: 2.5

- Formal Dining Room
- Spacious Great Room Open to Floor Above
- Large Eat-In Kitchen Complete with Working Island and Desk
- Convenient Pass-Thru Window From Kitchen to Screen Porch
- Arched Top Great Room Windows Allow for Bright Sunny Room
- Large Garage and Carport with Abundant Storage on Ground Floor
- 9' Ceilings on First Floor, 8' on Second Floor

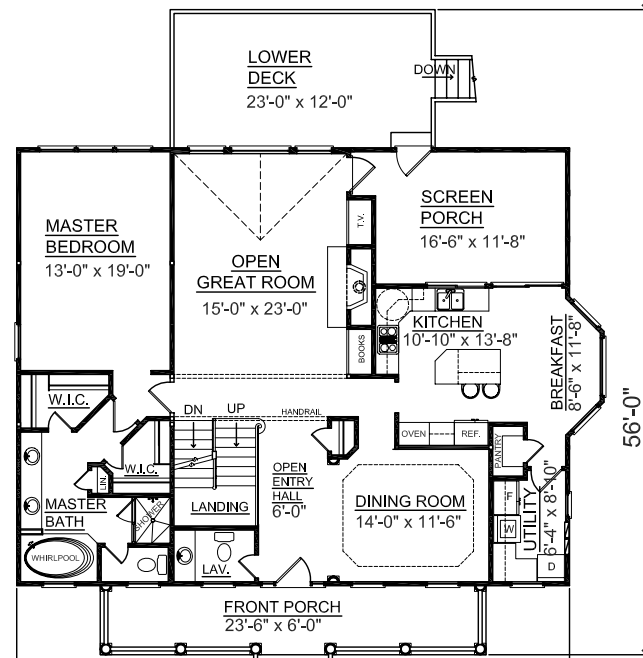
First Floor	1643	Sq. Ft.
Second Floor	607	Sq. Ft.
Garage	1599	Sq. Ft.
Screen Porch	208	Sq. Ft.
Front Porch	201	Sq. Ft.
Cooking Deck	276	Sq. Ft.



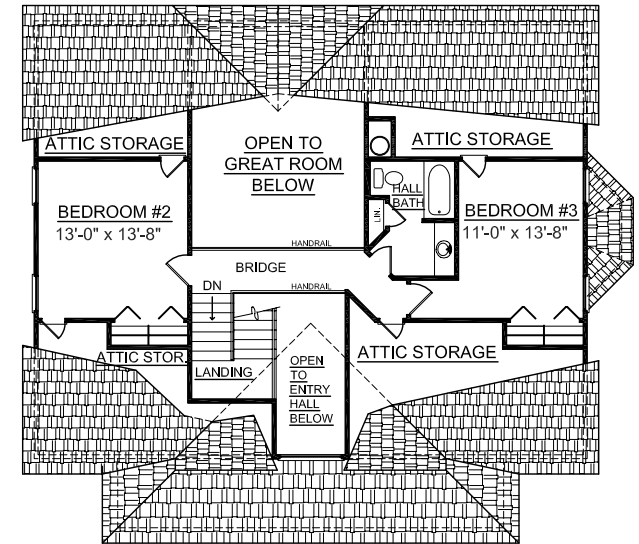
REAR ELEVATION



GROUND FLOOR PLAN



FIRST FLOOR PLAN



SECOND FLOOR PLAN

Plan No.  
**2250**