

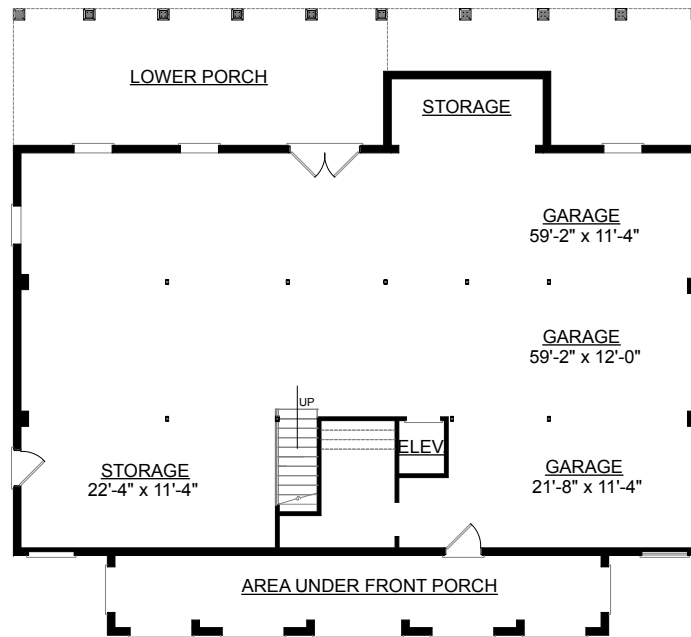


REAR ELEVATION

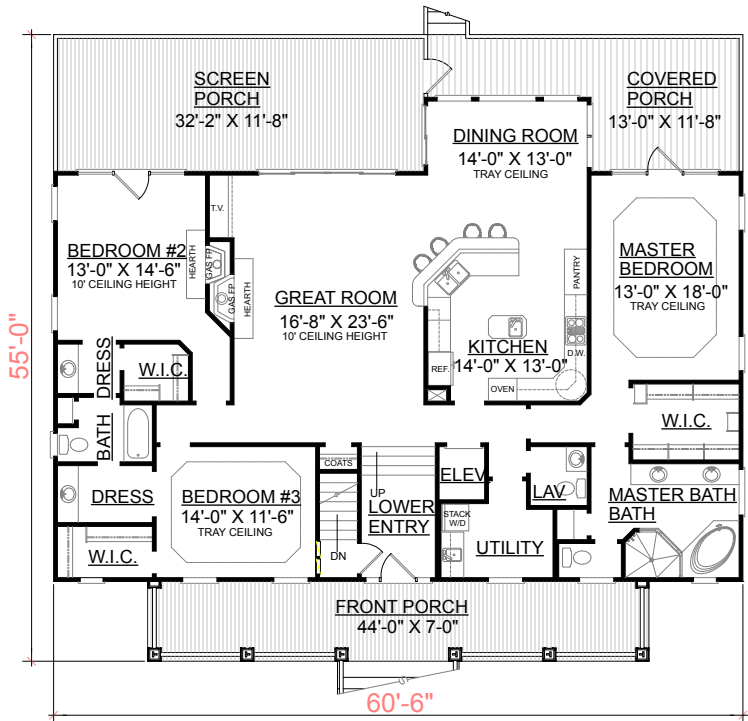
OVERVIEW

- TOTAL: 2377 SQ. FT.
- BEDROOMS: 3
- BATHROOMS: 2.5
- 10' Ceilings Throughout Main Floor
- Decorative Tray Ceilings in Two Bedrooms
- Two Fireplaces for those Brisk Winter Nights
- Open Floor Plan Great For Entertaining
- Split Bedroom Plan with "Jack and Jill" Bath
- Spacious Walk-in Closets Throughout
- Convenient Elevator Centrally Located
- Exquisite Master Suite With Spacious Bath and Private Deck Access
- 3 Bay Side Entry Garage

FRONT ELEVATION



GROUND FLOOR PLAN



FIRST FLOOR PLAN

First Floor	2273 Sq. Ft.
Finished Ground Floor	----- Sq. Ft.
Garage	2273 Sq. Ft.
Deck	239 Sq. Ft.
Screen Porch	392 Sq. Ft.
Front Porch	326 Sq. Ft.
Overall Height	29'-8"