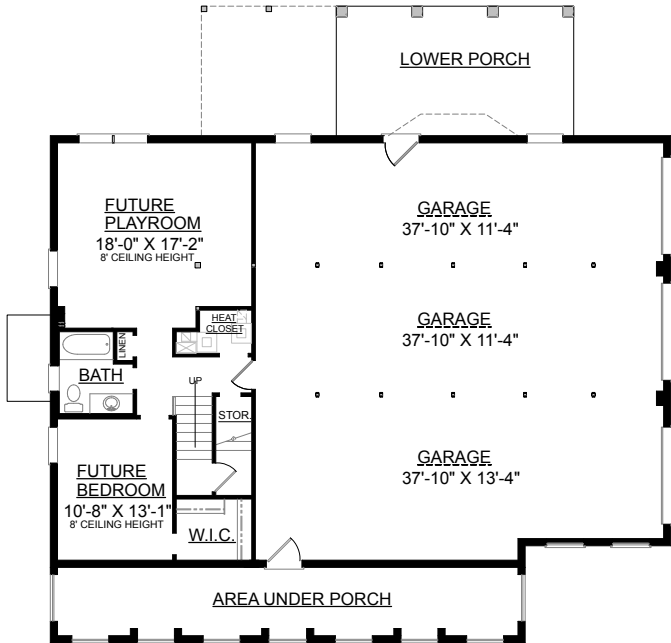




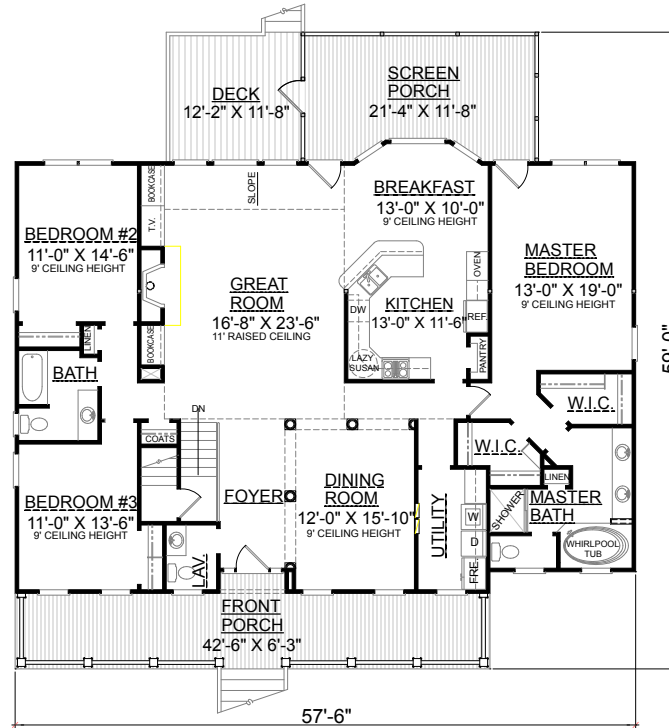
FRONT ELEVATION



REAR ELEVATION



GROUND FLOOR PLAN



FIRST FLOOR PLAN

Plan No.

2277-760-A

OVERVIEW

- TOTAL: 2277 Sq. Ft.
- BEDROOMS: 3+
- BATHROOMS: 2.5+
- 9' Ceiling Heights on Main Floor with 11' Ceiling in Great Room
- Great Room Open to Breakfast Area and Kitchen which is Great for Entertaining
- Decorative Columns Surround Formal Dining Room
- Split Bedroom Plan
- Potential for Bedroom, Playroom, and Bath on Ground Floor
- Master Bedroom Boasts 2 Walk-In Closets, Spacious Bath, and is Easily Accessible to the Utility Room
- 3 Bay Side Entry Garage

First Floor	2277 Sq. Ft.
Finished Ground Floor	760 Sq. Ft.
Garage	1513 Sq. Ft.
Deck	150 Sq. Ft.
Screen Porch	246 Sq. Ft.
Front Porch	322 Sq. Ft.
Overall Height	31'-6"