



FRONT ELEVATION

OVERVIEW

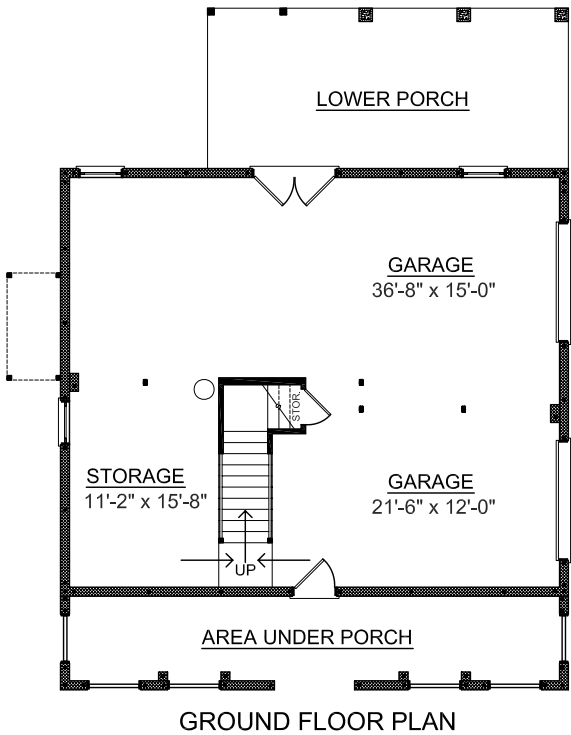
TOTAL: 2281 Sq. Ft.
 BEDROOMS: 3
 BATHROOMS: 2.5

- Spacious Elegant Plan with 9' Ceilings Throughout
- Impressive Open Foyer Greet Guests and Adjoins Formal Dining Room and Study
- Bright and Sunny Breakfast Area Opens into Kitchen and Great Room
- Second Floor Master Bedroom with Pampering Bath and Roomy Walk-in Closet
- Convenient Second Floor Laundry Room
- Two Spacious Second Floor Bedrooms with Hall Bath
- Private Upper Deck Off Master Bedroom

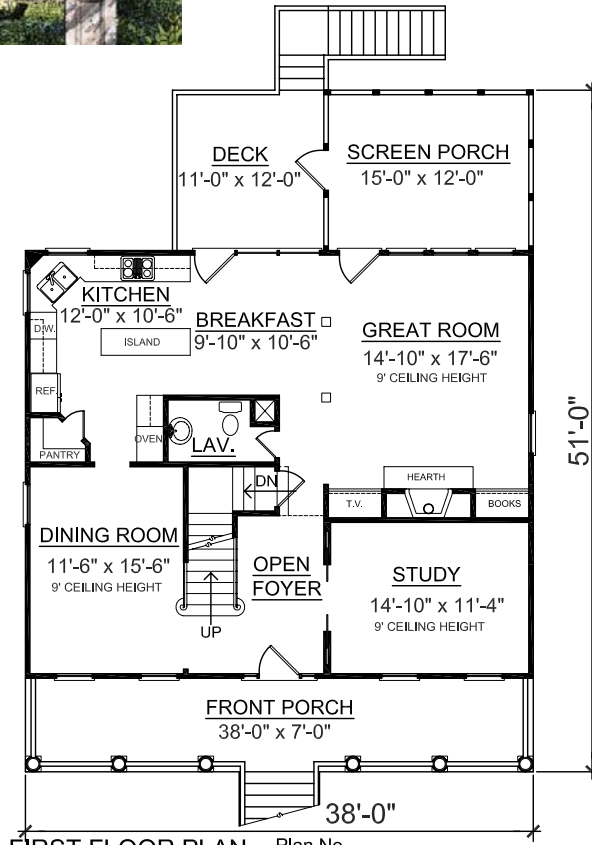


REAR ELEVATION

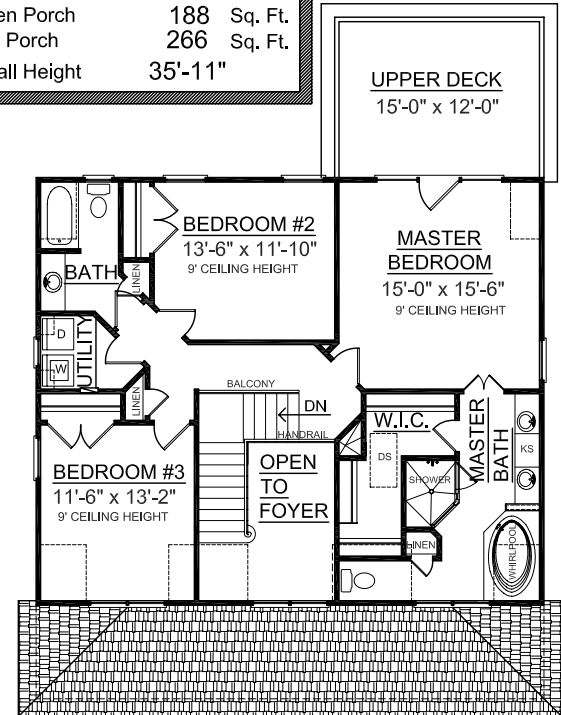
First Floor	1216 Sq. Ft.
Second Floor	1065 Sq. Ft.
Garage	1216 Sq. Ft.
Upper Deck	188 Sq. Ft.
Screen Porch	188 Sq. Ft.
Front Porch	266 Sq. Ft.
Overall Height	35'-11"



GROUND FLOOR PLAN



FIRST FLOOR PLAN Plan No.



SECOND FLOOR PLAN

2281-A