



FRONT ELEVATION

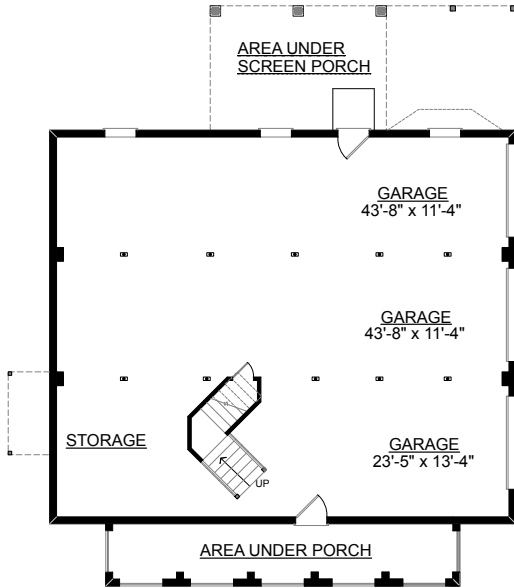
OVERVIEW

- TOTAL: 2310 Sq. Ft.
 BEDROOMS: 3
 BATHROOMS: 3.5
 -9' Ceiling Heights Throughout
 -First Floor Master Suite Complete with Spacious Walk-In Closet, Dual Sink Vanity, and Whirlpool Tub
 -Kitchen Includes Island, Pantry, Desk, and Raised Breakfast Bar
 -Abundant Attic Storage
 -Second Floor Balcony Overlooks Great Room and Foyer
 -3 Bay Side Entry Garage
 -See Plan #2380 with Dormers and Finished Ground Floor
 - See plan #2785 A & B for 3 Bedroom on the Second Floor

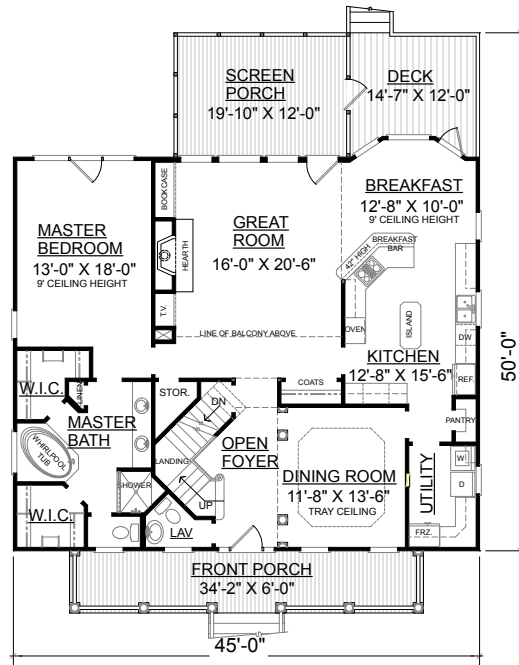
First Floor	1726	Sq. Ft.
Second Floor	584	Sq. Ft.
Finished Ground Floor	----	Sq. Ft.
Garage	1710	Sq. Ft.
Deck	134	Sq. Ft.
Screen Porch	204	Sq. Ft.
Front Porch	205	Sq. Ft.
Overall Height	32'-9"	



REAR ELEVATION

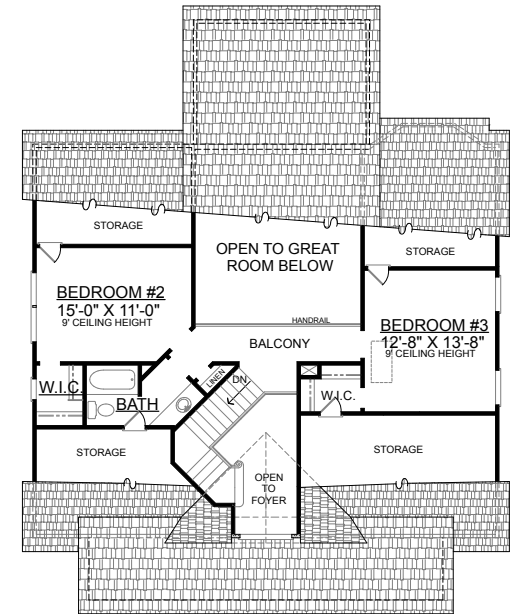


GROUND FLOOR PLAN



FIRST FLOOR PLAN
Plan No.

2310



SECOND FLOOR PLAN