



FRONT ELEVATION

OVERVIEW

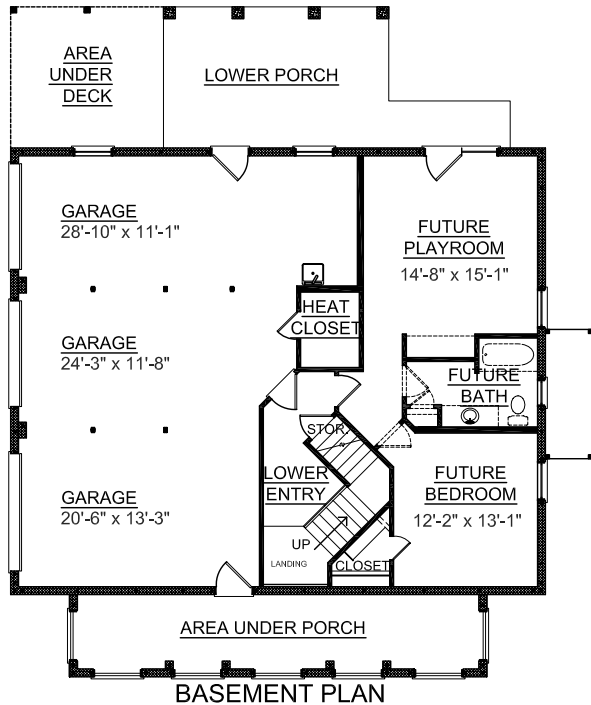
- TOTAL: 2370 Sq. Ft.
- BEDROOMS: 3
- BATHROOMS: 2.5
- 9' Ceiling Heights Throughout both First and Second Floors
- Second Floor Balcony overlooks Great Room & Entry Hall
- Each Spacious Bedroom Consists of Large Walk-in Closets
- Great Room opens into Breakfast Area and Kitchen
- Kitchen has Walk-in Pantry and Large Work Island
- Master Bedroom Boasts 2 Walk-in Closets, Dual Sink Vanity, 72"x42" Whirlpool Tub & Separate Shower
- Additional Living Space of 763 Sq. Ft. in Basement
- 3 Bay Side Entry Garage

For elevator shaft:
 see house plans:
 2540 2922 2941 3203-807
 already on web site

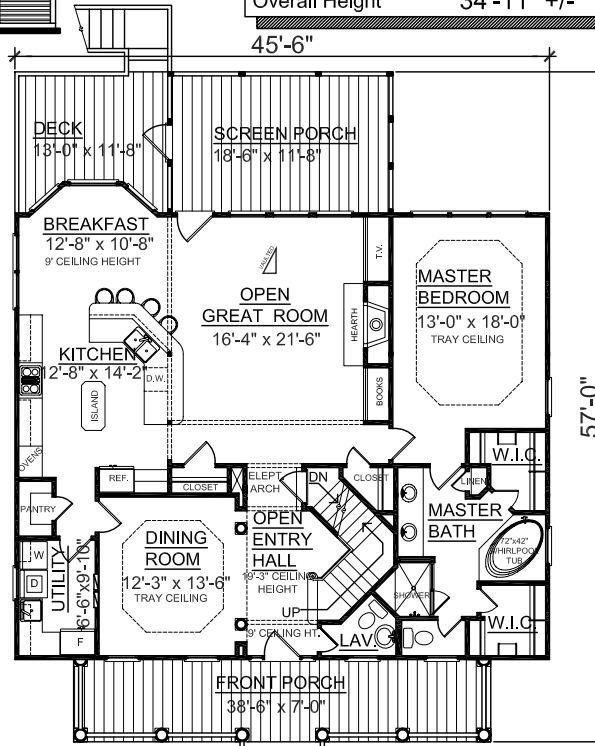
First Floor	1751 Sq. Ft.
Second Floor	619 Sq. Ft.
Garage Unheated	966 Sq. Ft.
Garage Future Heated	763 Sq. Ft.
Deck	134 Sq. Ft.
Screen Porch	230 Sq. Ft.
Front Porch	248 Sq. Ft.
Overall Height	34'-11" +/-



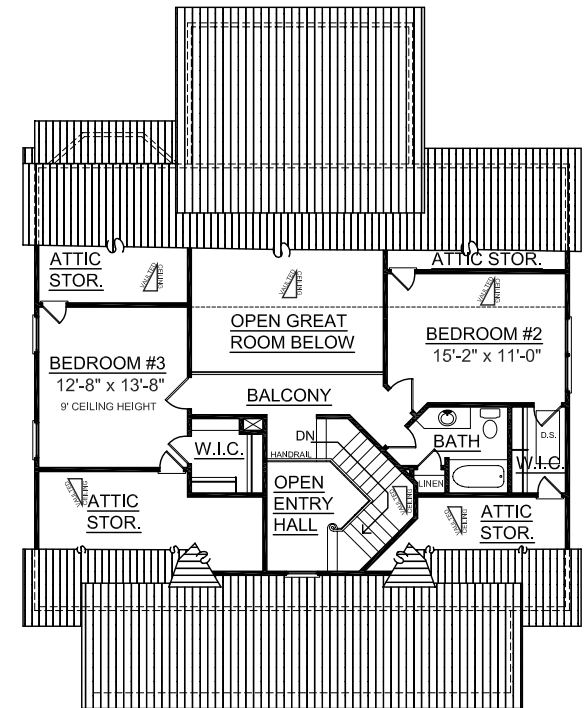
REAR ELEVATION



BASEMENT PLAN



MAIN FLOOR PLAN



SECOND FLOOR PLAN