



FRONT ELEVATION

OVERVIEW

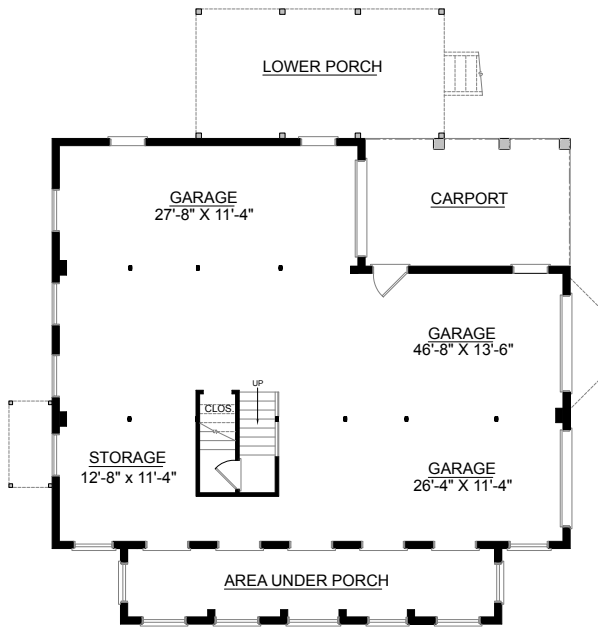
- TOTAL: 2458 Sq. Ft.
 BEDROOMS: 3
 BATHROOMS: 3.5
- 9' Ceilings Throughout First and Second Floors
 - Formal Dining Room with Decorative Columns and Tray Ceiling
 - Exquisite Master Bedroom with Pampering Bath
 - Spacious Great Room with Vaulted Ceiling Sloping to Two Story Window Wall Infusing Home with Light
 - Open Kitchen with Island and Breakfast Bar
 - Two Additional Bedrooms on Second Floor with Private Baths and Walk In Closets
 - 3 Bay Side Entry Garage with Carport

First Floor	1643	Sq. Ft.
Second Floor	815	Sq. Ft.
Finished Ground Floor	-----	Sq. Ft.
Garage	1599	Sq. Ft.
Deck	276	Sq. Ft.
Screen Porch	208	Sq. Ft.
Front Porch	247	Sq. Ft.
Overall Height	34'-5"	

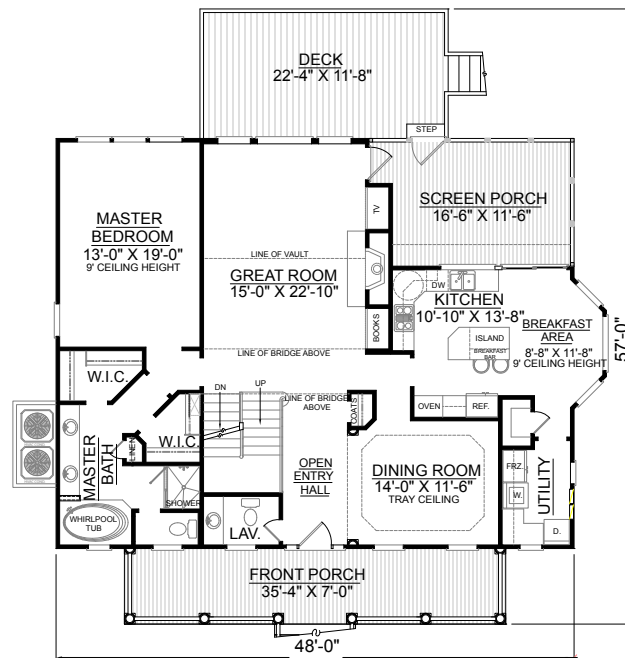


REAR ELEVATION

See Plan 2502 or 2822 for 3rd Bedroom on 2nd Floor.



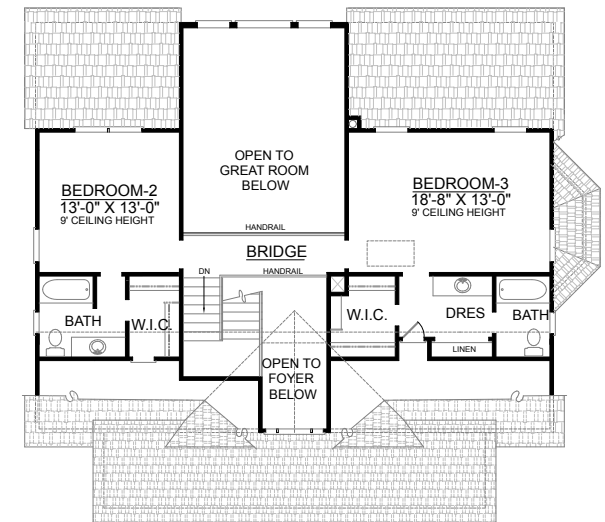
GROUND FLOOR PLAN



FIRST FLOOR PLAN

Plan No.

2458



SECOND FLOOR PLAN