



FRONT ELEVATION

OVERVIEW

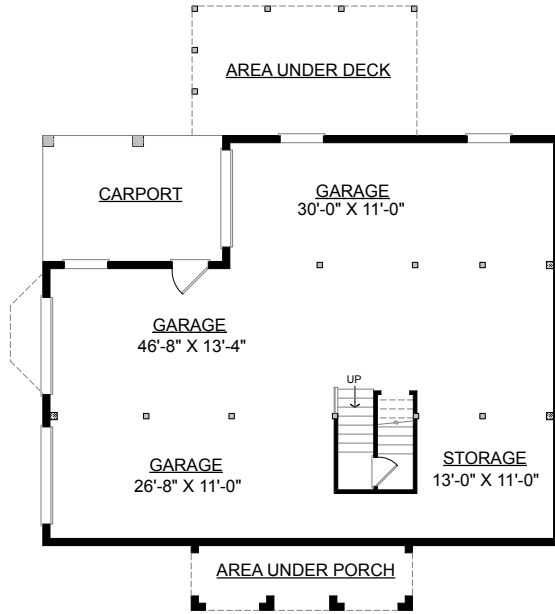
TOTAL: 2484 Sq. Ft.
BEDROOMS: 4
BATHROOMS: 2.5

- Great Room Complete with Cozy Fireplace, Many Built-Ins, and Illuminated with Large Windows Overlooking Yard
- Gourmet Kitchen Complete with Working Island Adjoins Sunny Breakfast Area
- Striking First Floor Master Suite Boasts 2 Walk-In Closets, Dual Sink Vanity, and Relaxing Whirlpool Tub
- Ground Floor Offers Abundant Garage and Storage Space with Carport
- 9' Ceilings on First Floor; 8' Ceilings on Second Floor

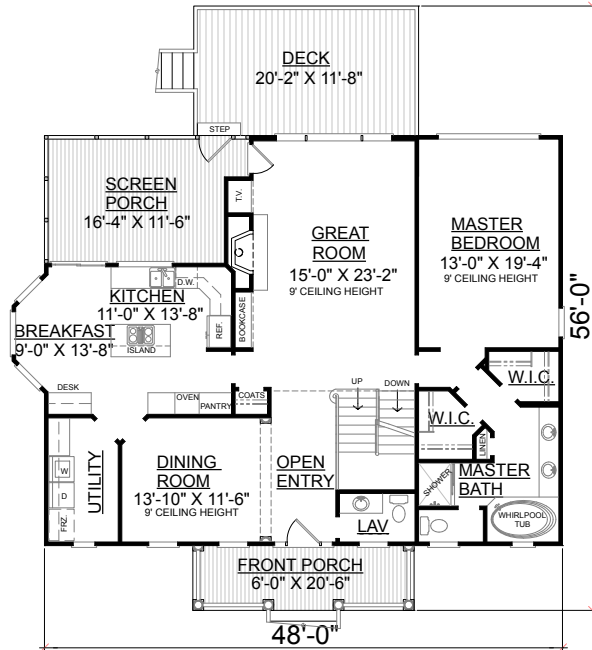


REAR ELEVATION

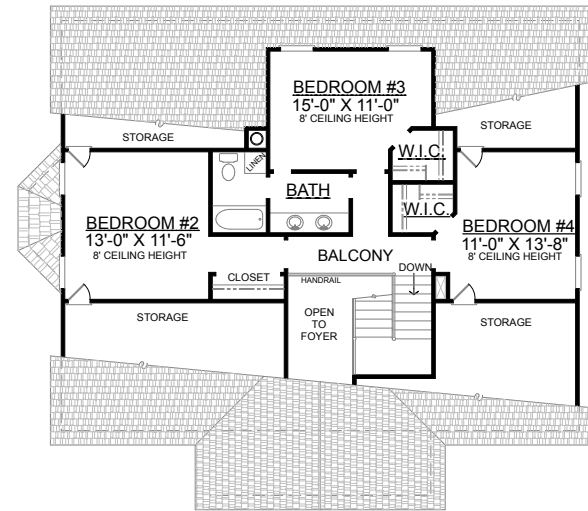
First Floor	1642	Sq. Ft.
Second Floor	842	Sq. Ft.
Finished Ground Floor	----	Sq. Ft.
Garage	1599	Sq. Ft.
Deck	250	Sq. Ft.
Screen Porch	206	Sq. Ft.
Front Porch	123	Sq. Ft.
Overall Height	34'-8"	



GROUND FLOOR PLAN



FIRST FLOOR PLAN
Plan No.



SECOND FLOOR PLAN

2484-A