



FRONT ELEVATION

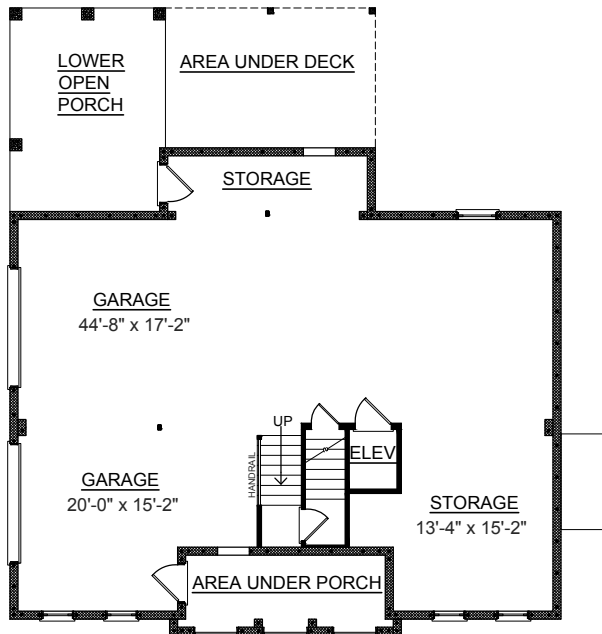
**OVERVIEW**

- TOTAL: 2590 Sq. Ft.  
 4 BEDROOMS 3 1/2 BATHS  
 -9' Ceiling Heights on First and Second Floors  
 -Two Story Entry  
 -Open Kitchen, Dining & Great Room  
 -First Floor Master Suite Features 2 Walk-In Closets  
 -Convenient Elevator Accessible to All Floors  
 -Side Entry Garage

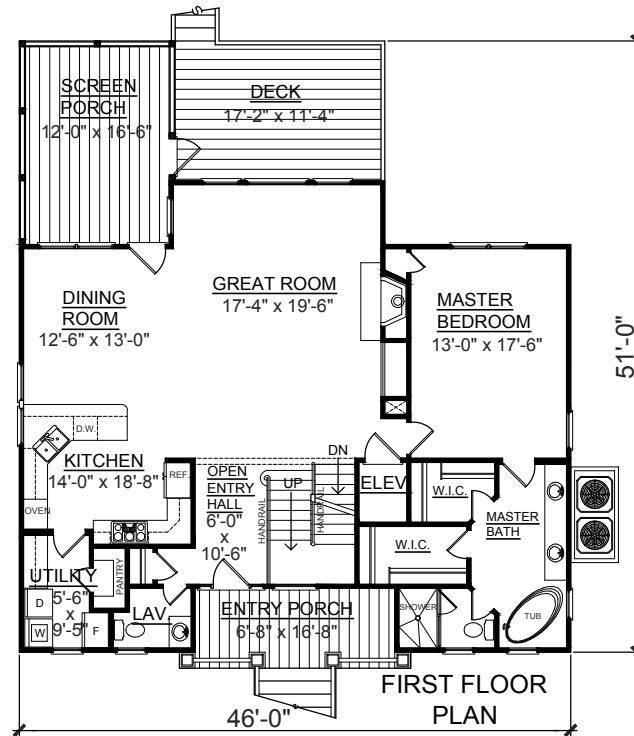
First Floor	1571 Sq. Ft.
Second Floor	1019 Sq. Ft.
Garage	1571 Sq. Ft.
Front Porch	115 Sq. Ft.
Screen Porch	218 Sq. Ft.
Deck	204 Sq. Ft.
Overall Height	34'-10" +/-



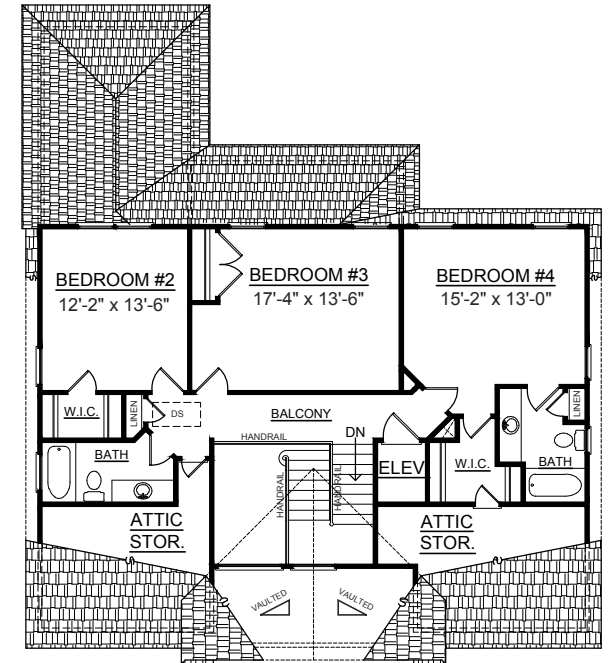
REAR ELEVATION



GROUND FLOOR PLAN



FIRST FLOOR PLAN



SECOND FLOOR PLAN