



FRONT ELEVATION

OVERVIEW

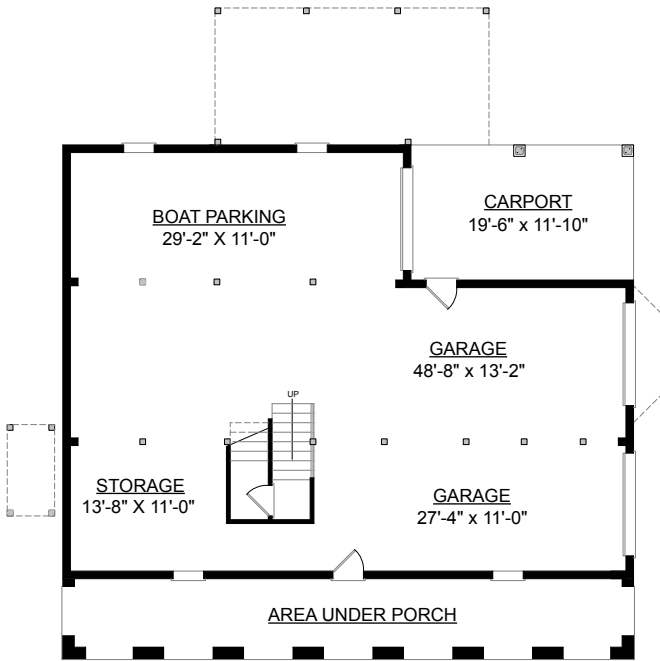
TOTAL: 2659 Sq. Ft.
BEDROOMS: 4
BATHROOMS: 3.5

- Striking Arched Top Windows In Great Room Compliment this Open Two Story Space
- Second Floor Bridge Overlooks Great Room and Foyer
- First Floor Master Suite Flaunts 2 Spacious Walk-In Closets, Double Vanities for Busy Mornings, and Relaxing Whirlpool Tub for Stressful Days
- 9' Ceiling Heights Throughout First Floor; 8' on Second
- Charming Full Length Front Porch
- 3 Bay Side Entry Garage Includes Tremendous Storage Space and Carport

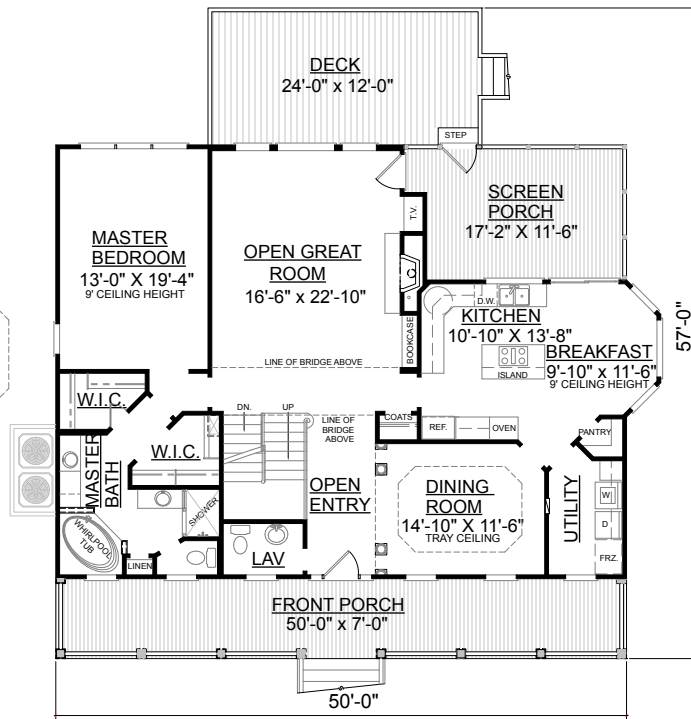


REAR ELEVATION

First Floor	1713	Sq. Ft.
Second Floor	946	Sq. Ft.
Finished Ground Floor	----	Sq. Ft.
Garage	1669	Sq. Ft.
Deck	288	Sq. Ft.
Screen Porch	214	Sq. Ft.
Front Porch	350	Sq. Ft.
Overall Height	35'-7"	

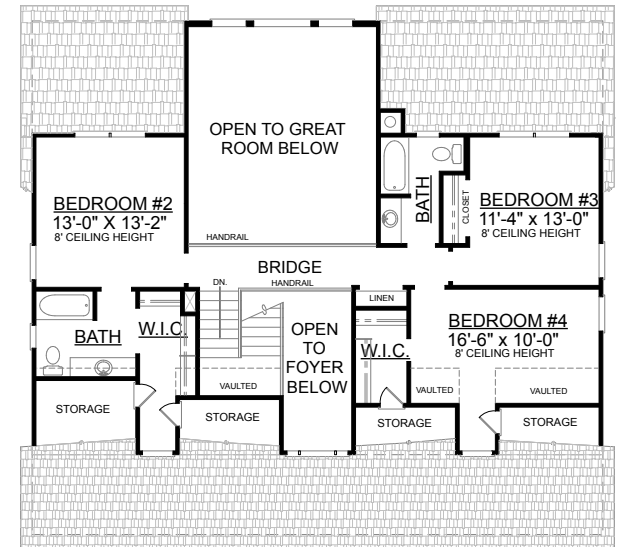


GROUND FLOOR PLAN



FIRST FLOOR PLAN
Plan No.

2659-A



SECOND FLOOR PLAN