



FRONT ELEVATION

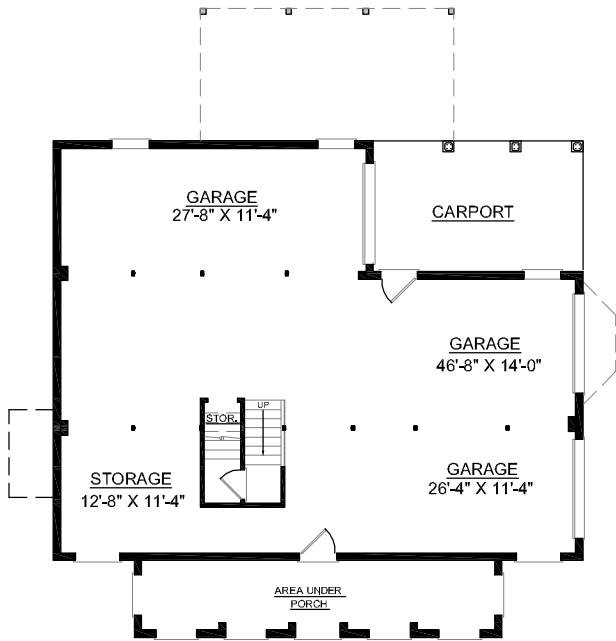
OVERVIEW

- TOTAL: 2672 Sq. Ft.
 BEDROOMS: 4
 BATHROOMS: 3.5
- 9' Ceilings Throughout First Floor; 8' on Second
 - Open Great Room with Spectacular Two Story Arch-Top Window
 - Handsome Kitchen Loaded with All the Amenities
 - Spacious Screen Porch Accessible from Kitchen and Great Room
 - Luxurious First Floor Master Suite with Pampering Bath
 - 3 bay, Side Entry Garage Complete with Carport and Abundant Storage Space

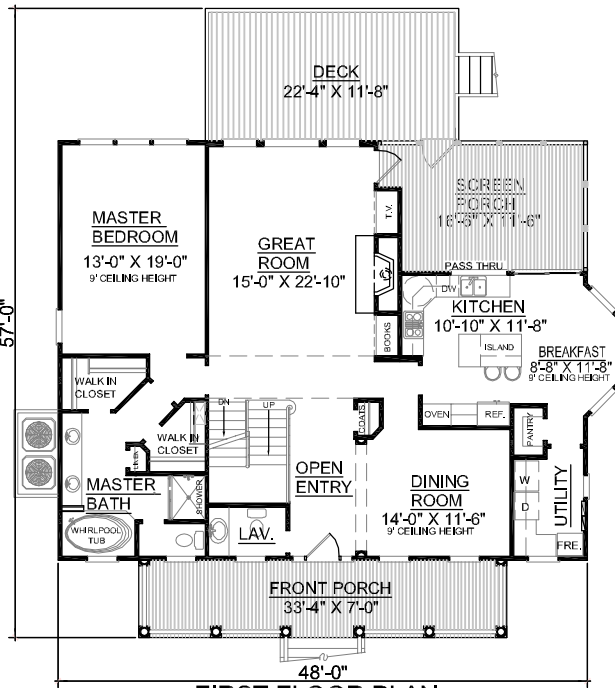


REAR ELEVATION

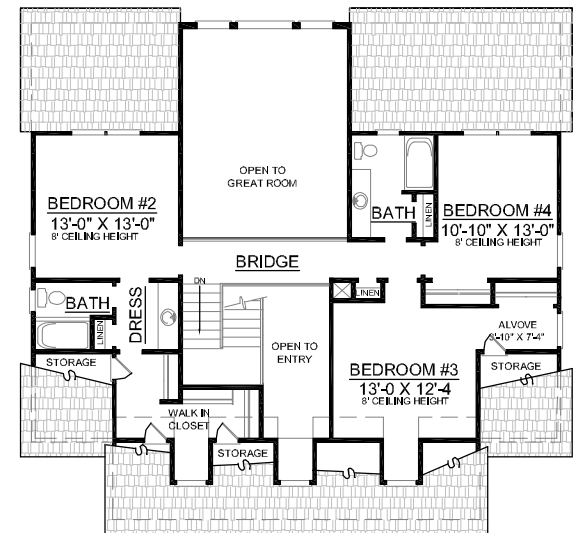
First Floor	1643	Sq. Ft.
Second Floor	1029	Sq. Ft.
Finished Ground Floor	----	Sq. Ft.
Garage	1599	Sq. Ft.
Deck	276	Sq. Ft.
Screen Porch	208	Sq. Ft.
Front Porch	233	Sq. Ft.
Overall Height	35'-8"	



GROUND FLOOR PLAN



FIRST FLOOR PLAN



SECOND FLOOR PLAN