

**OVERVIEW**

TOTAL: 2689 Sq. Ft.  
 BEDROOMS: 4  
 BATHROOMS: 3.5  
 -9' Ceiling Heights Throughout First Floor; 8' on Second  
 -Spacious Great Room has Vaulted Ceiling  
 -Kitchen is Complete with Breakfast Area, Island, Pantry, Desk, and Bay Window  
 -First Floor Master Suite Boasts 2 Walk-In Closets, Dual Sink Vanity, and Whirlpool Tub  
 -Second Floor Bridge Overlooks Foyer and Great Room  
 -3 Bay Side Entry Garage with Carport and Storage Space  
 -Charming Full Length Front Porch for Unique Curb Appeal

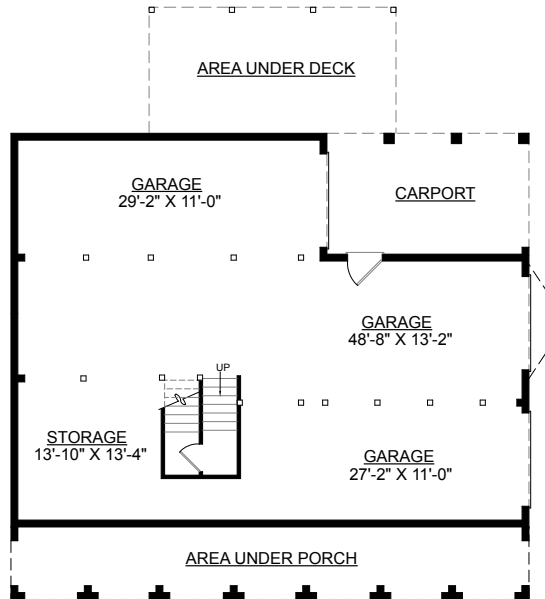


**REAR ELEVATION**

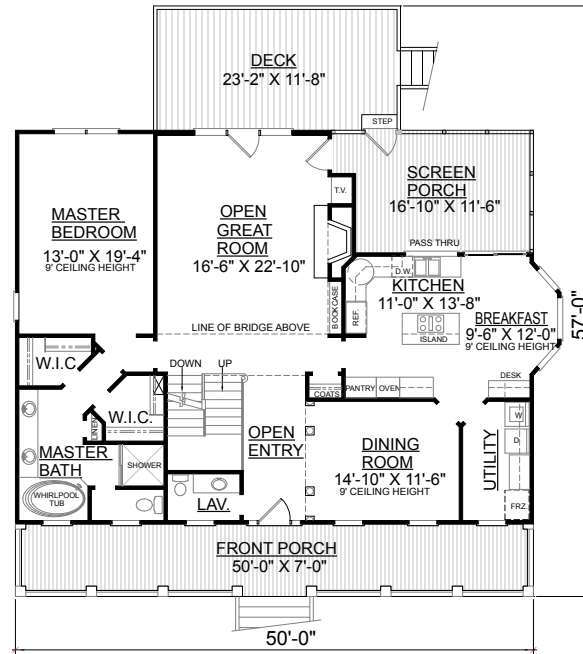
First Floor	1712	Sq. Ft.
Second Floor	977	Sq. Ft.
Finished Ground Floor	-----	Sq. Ft.
Garage	1669	Sq. Ft.
Deck	286	Sq. Ft.
Screen Porch	213	Sq. Ft.
Front Porch	350	Sq. Ft.
Overall Height	37'-6"	



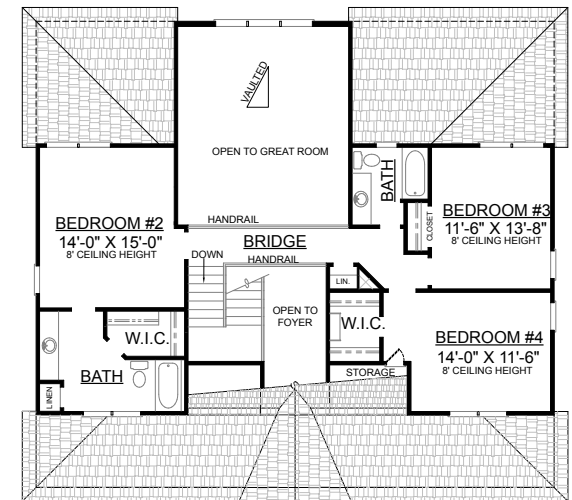
**FRONT ELEVATION**



**GROUND FLOOR PLAN**



**FIRST FLOOR PLAN**



**SECOND FLOOR PLAN**