



FRONT ELEVATION

**OVERVIEW**

**TOTAL:** 2699 Sq. Ft. + 763 Basement  
**BEDROOMS:** 4  
**BATHROOMS:** 3.5

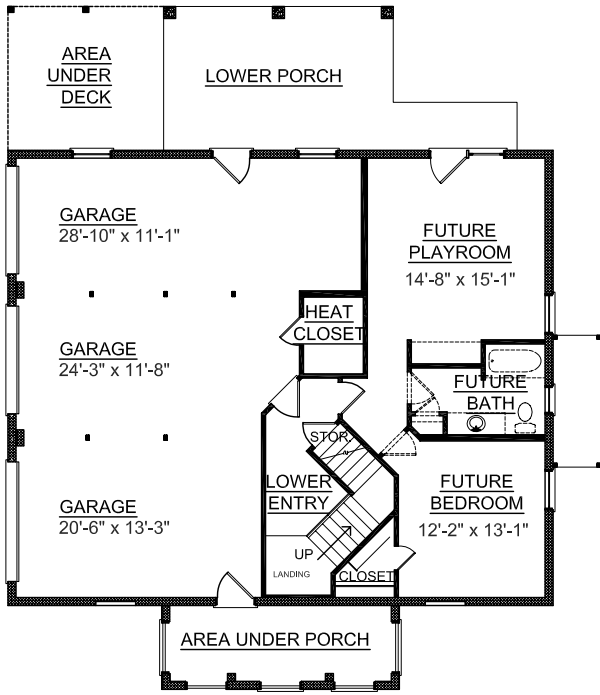
- 9' Ceiling Heights Throughout both First and Second Floors
- Second Floor with 3 Bedrooms, 2 with Jack & Jill Baths
- Each Spacious Bedroom Consists of Large Closets
- Great Room opens into Breakfast Area and Kitchen
- Kitchen has Walk-in Pantry and Large Work Island
- Master Bedroom Boasts 2 Walk-in Closets, Dual Sink Vanity, 72"x42" Whirlpool Tub & Separate Shower
- Abundant Storage Located On Every Floor
- Additional Living Space of 763 Sq. Ft. in Basement
- 3 Bay Side Entry Garage



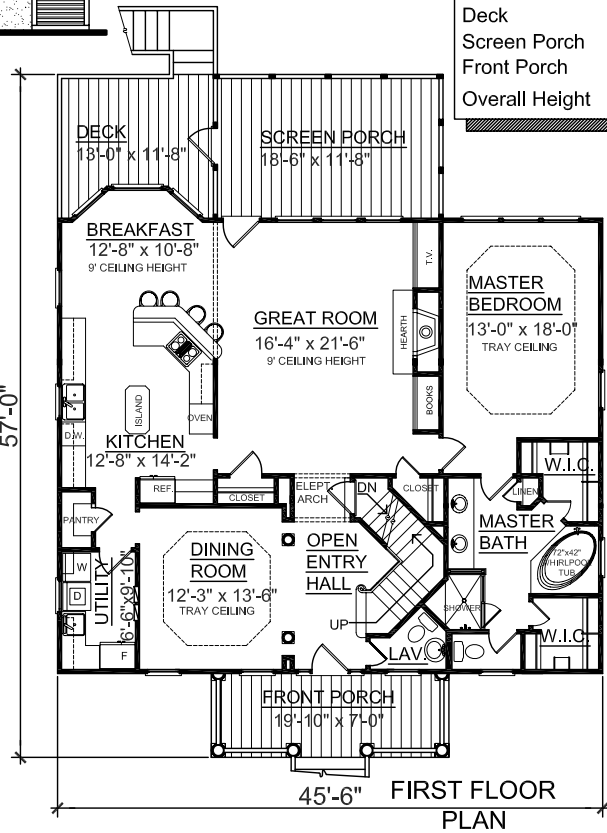
REAR ELEVATION

For elevator shaft:  
 see house plans:  
 2922 2941 3203-807  
 already on web site

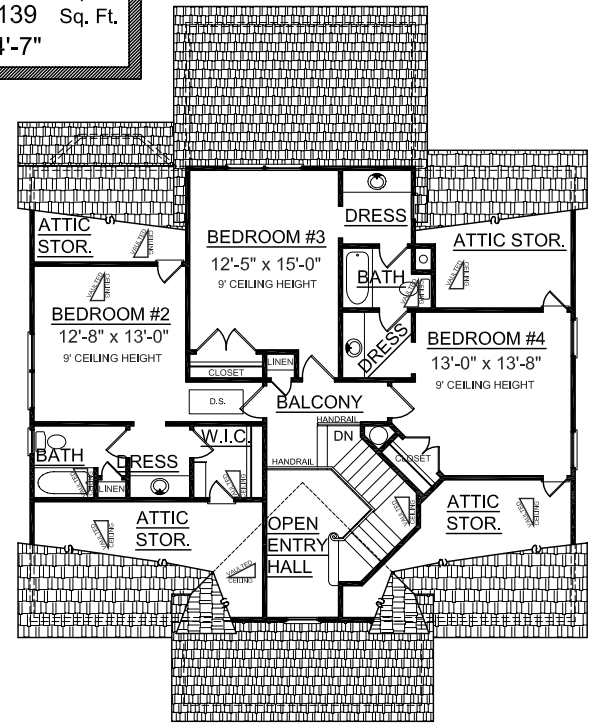
First Floor	1751	Sq. Ft.
Second Floor	948	Sq. Ft.
Finished Ground Floor	763	Sq. Ft.
Garage	935	Sq. Ft.
Deck	134	Sq. Ft.
Screen Porch	230	Sq. Ft.
Front Porch	139	Sq. Ft.
Overall Height	34'-7"	



GROUND FLOOR PLAN



FIRST FLOOR PLAN



SECOND FLOOR PLAN