



FRONT ELEVATION

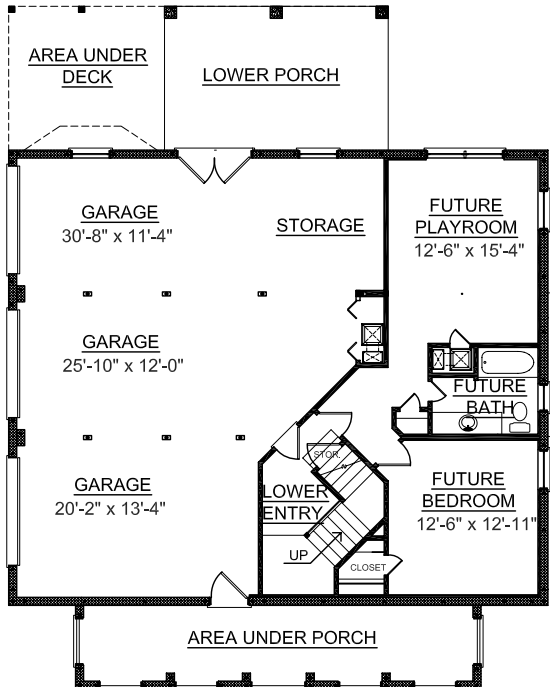


REAR ELEVATION

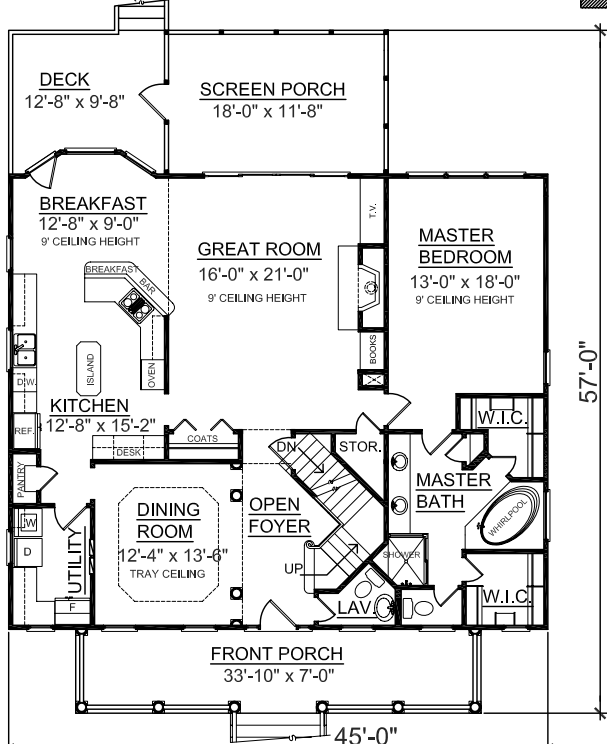
OVERVIEW

- TOTAL: 2785 Sq. Ft.
 BEDROOMS: 3 +
 BATHROOMS: 3.5 +
- 9 Ceiling Heights "Throughout First Floor, 8' on Second Floor
 - Second Floor Complete with Study
 - Each Spacious Bedroom Consists of Walk-In Closets
 - "Jack & Jill" Bath Located Between Study and Bedroom #3
 - Great Room Flows into Breakfast Area and Kitchen
 - Master Bedroom Boasts 2 Walk-In Closets, Dual Sink Vanity, and Whirlpool Tub
 - Abundant Storage Located On Every Floor
 - Additional Living Spaces on Ground Floor
 - 3 Bay Side entry Garage

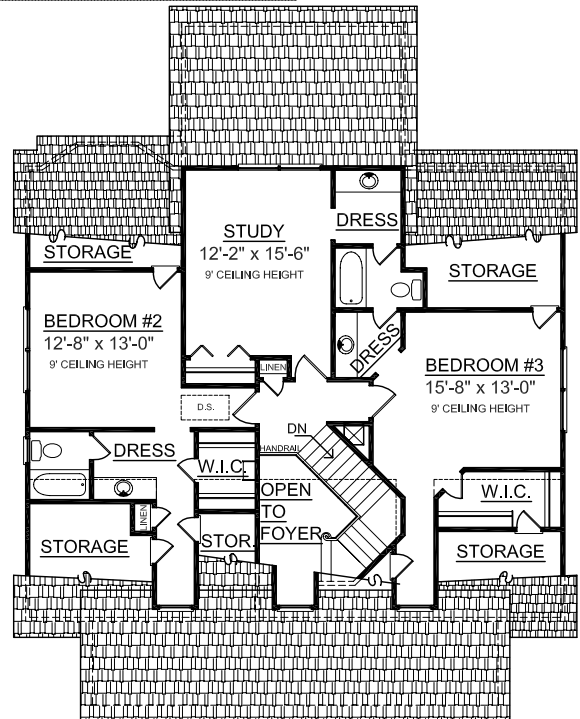
| | |
|-----------------------|--------------|
| First Floor | 1726 Sq. Ft. |
| Second Floor | 1059 Sq. Ft. |
| Finished Ground Floor | 712 Sq. Ft. |
| Garage | 998 Sq. Ft. |
| Deck | 140 Sq. Ft. |
| Screen Porch | 224 Sq. Ft. |
| Front Porch | 237 Sq. Ft. |
| Overall Height | 32'-7" |



GROUND FLOOR PLAN



FIRST FLOOR PLAN Plan No.



SECOND FLOOR PLAN