



FRONT ELEVATION

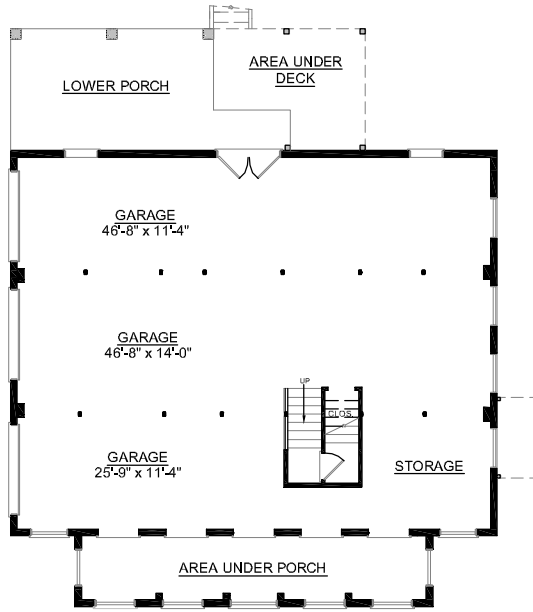
**OVERVIEW**

- TOTAL: 2822 Sq. Ft.
- BEDROOMS: 3
- BATHROOMS: 3.5
- 9' Ceiling Heights Throughout First and Second Floor
- Spacious Great Room with Cozy Fireplace
- Formal Dining Room Complete with Tray Ceiling
- Open Kitchen With Large Working Island Complete With Breakfast Bar Merges with Sunroom and Breakfast Area
- Exquisite Master Bedroom with Pampering Bath Boasts Decorative Tray Ceiling
- Universal Second Floor Loft Area Between Two Spacious Bedrooms Includes Upper Deck Access.
- 3 Bay Side Entry Garage and Storage on Ground Floor

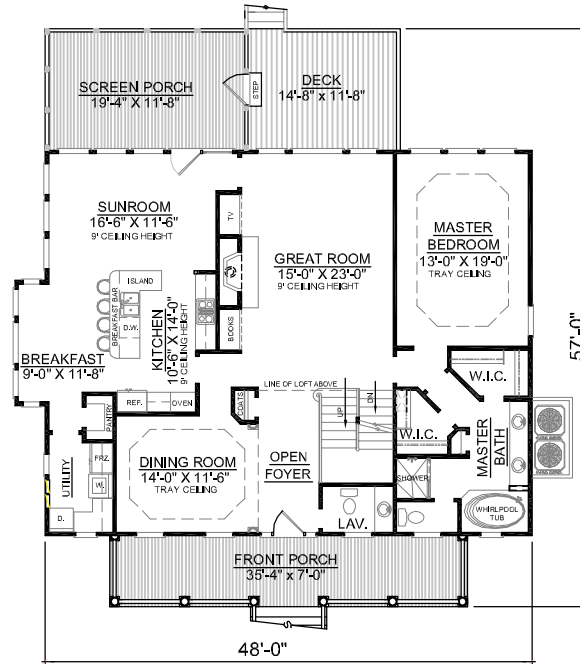
First Floor	1861	Sq. Ft.
Second Floor	961	Sq. Ft.
Finished Ground Floor	-----	Sq. Ft.
Garage	1824	Sq. Ft.
Deck	180	Sq. Ft.
Screen Porch	240	Sq. Ft.
Front Porch	233	Sq. Ft.
Upper Deck	151	Sq. Ft.
Overall Height	34'-5"	



REAR ELEVATION



GROUND FLOOR PLAN



FIRST FLOOR PLAN  
Plan No.

**2822**



SECOND FLOOR PLAN