



OVERVIEW

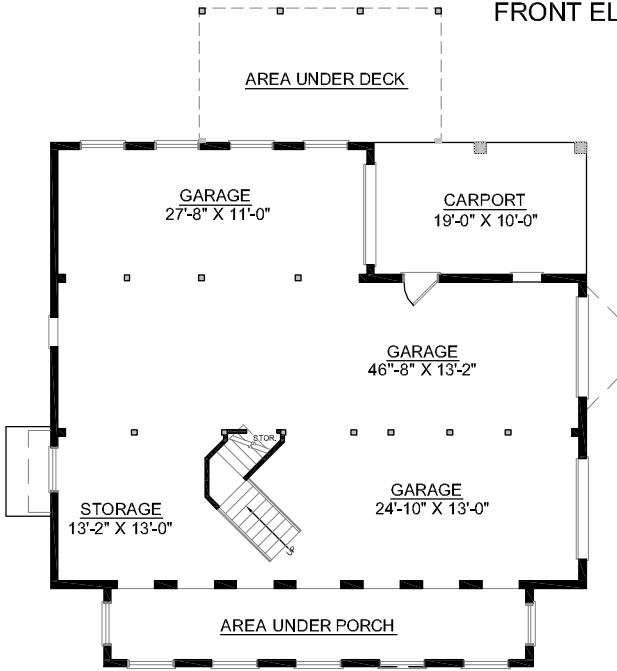
- TOTAL:** 2840 Sq. Ft.
BEDROOMS: 4
BATHROOMS: 3.5
- 9' Ceiling Heights Throughout First Floor; 8' on Second Floor
 - Impressive Great Room Accented with Arch-Top Two Story Windows
 - Spacious Kitchen Adjoins Sunny Breakfast Area with Bay Window and Sliding Doors onto Screen Porch
 - First Floor Master Suite Boasts Elegant Master Bath with 2 Walk-In Closets, Dual Sink Vanity, and Whirlpool Tub
 - Second Floor Bridge Overlooks Great Room and Foyer
 - Each Second Floor Bedroom Includes Private Bath
 - 3 Bay Side Entry Garage with Storage and Carport



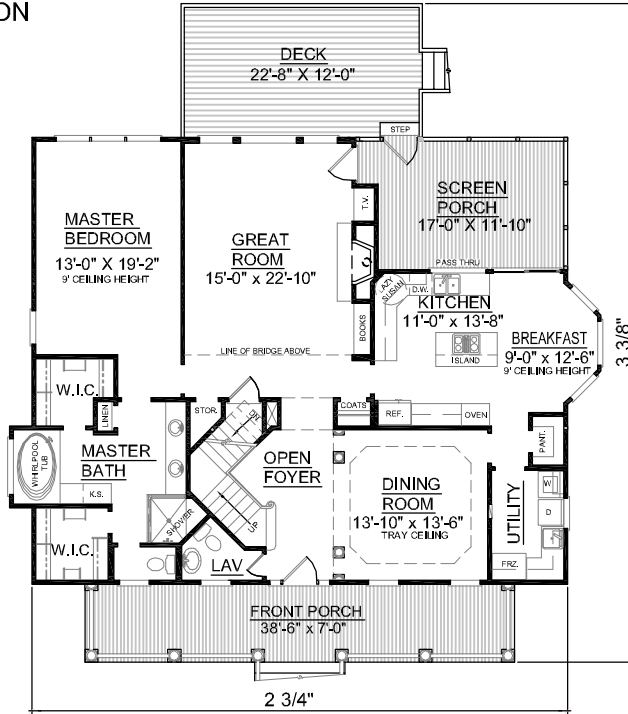
REAR ELEVATION

First Floor	1750	Sq. Ft.
Second Floor	1090	Sq. Ft.
Finished Ground Floor	----	Sq. Ft.
Garage	1695	Sq. Ft.
Deck	260	Sq. Ft.
Screen Porch	209	Sq. Ft.
Front Porch	270	Sq. Ft.
Overall Height	36'-10"	

FRONT ELEVATION



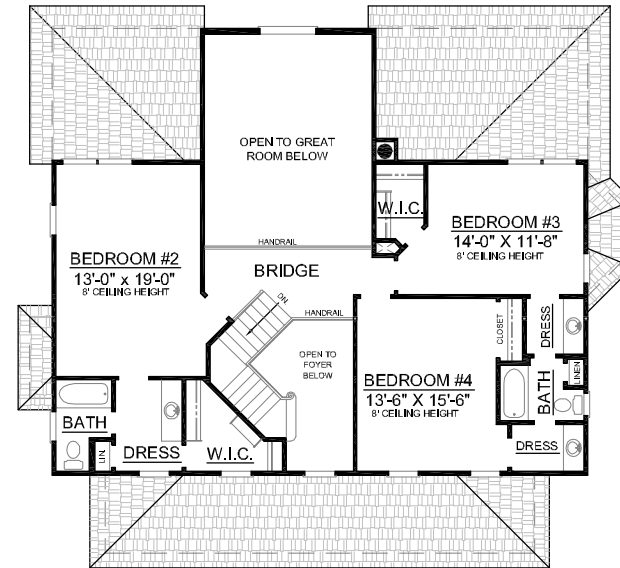
GROUND FLOOR PLAN



FIRST FLOOR PLAN

Plan No.

2840



SECOND FLOOR PLAN