

FRONT ELEVATION

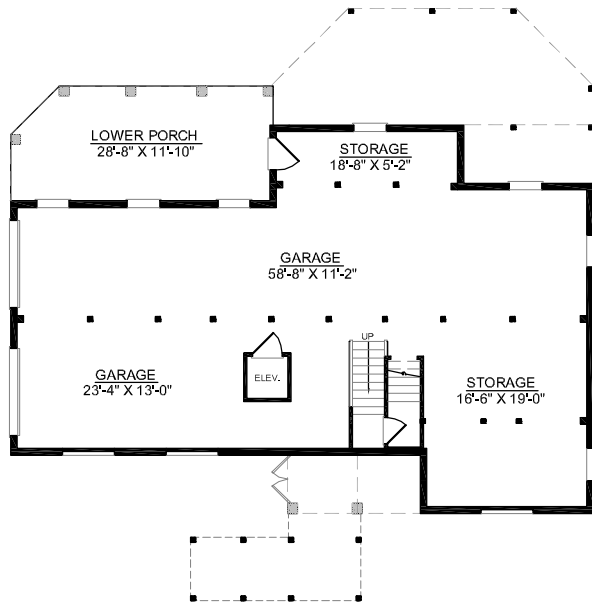
OVERVIEW

- TOTAL: 2853 Sq. Ft.
 BEDROOMS: 4
 BATHROOMS: 3.5
- 9' Ceiling Heights Throughout First Floor; 8' on Second Floor
 - Impressive Great Room Accented with Arched Top Two Story Windows
 - Spacious Gourmet Kitchen Flows into Sunny Morning Room
 - Large Screen Porch Accessible From Many Areas
 - First Floor Master Suite Boasts Elegant Master Bath with 2 Walk-In Closets, Double Vanities, and Whirlpool Tub
 - Second Floor Bridge Overlooks Great Room and Foyer
 - Plan Includes Convenient Elevator Leading to All Floors
 - 3 Bay Side Entry Garage with Abundant Storage



REAR ELEVATION

First Floor	1870	Sq. Ft.
Second Floor	983	Sq. Ft.
Finished Ground Floor	-----	Sq. Ft.
Garage	1858	Sq. Ft.
Deck	455	Sq. Ft.
Screen Porch	304	Sq. Ft.
Front Porch	82	Sq. Ft.
Overall Height	35'-0"	

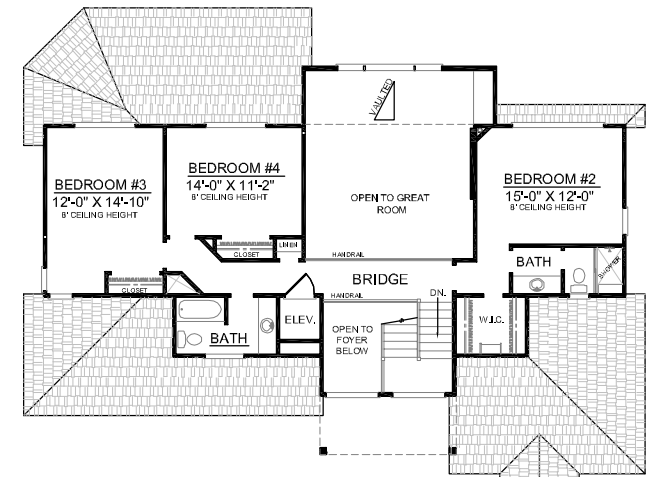


GROUND FLOOR PLAN



FIRST FLOOR PLAN
Plan No.

2853



SECOND FLOOR PLAN