



FRONT ELEVATION

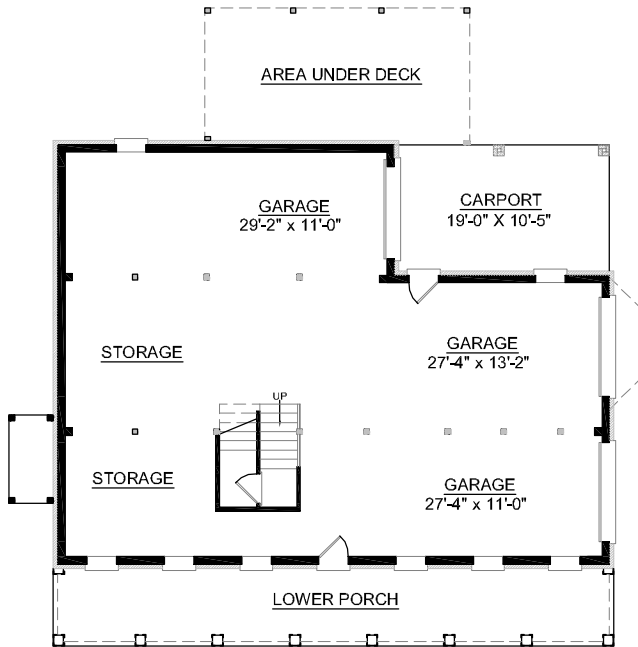
OVERVIEW

- TOTAL:** 2859 Sq. Ft.
- BEDROOMS:** 4
- BATHROOMS:** 3.5
- Spacious Great Room Complete with Cozy Fireplace Leading into Sunny Screen Porch
- Gourmet Kitchen Boasts Working Island and Adjoins Breakfast Area with Sliding Glass Doors to Screen Porch
- Striking First Floor Master Suite Boasts 2 Walk-In Closets, Double Vanities, and Relaxing Whirlpool Tub
- Formal Dining Room with Elegant Tray Ceiling and Decorative Columns
- Second Floor Spacious Bedrooms with Private Bath Access
- 9' Ceilings Throughout First Floor; 8' on Second Floor
- Full Brick Veneer
- See Plan #3506 for Larger Design with Elevator

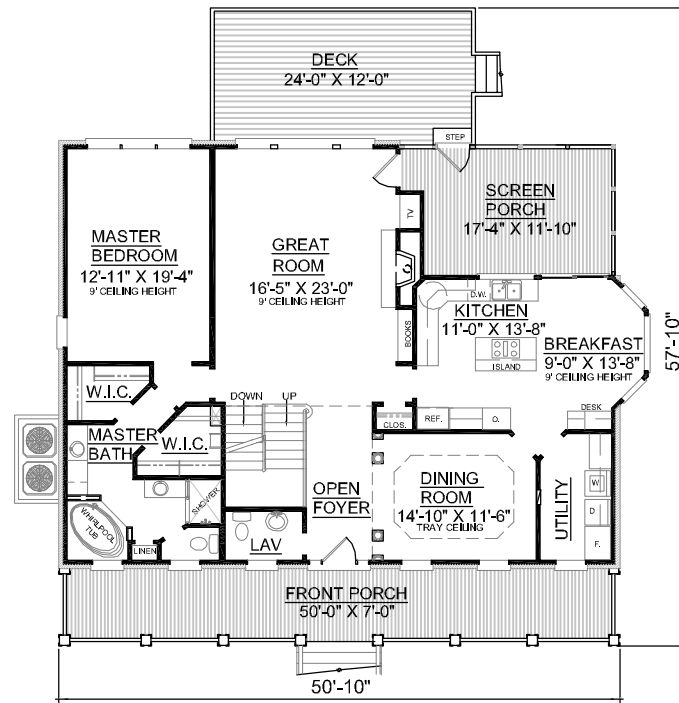


REAR ELEVATION

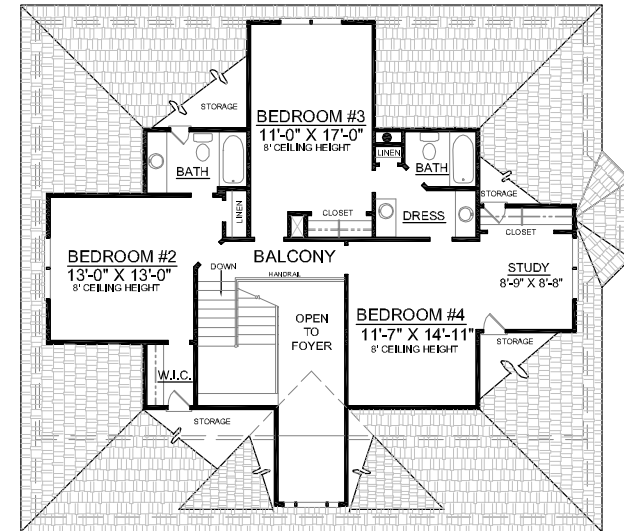
First Floor	1768	Sq. Ft.
Second Floor	1091	Sq. Ft.
Finished Ground Floor	---	Sq. Ft.
Garage	1743	Sq. Ft.
Deck	291	Sq. Ft.
Screen Porch	214	Sq. Ft.
Front Porch	329	Sq. Ft.
Overall Height	38'-8"	



GROUND FLOOR PLAN



FIRST FLOOR PLAN



SECOND FLOOR PLAN

Plan No.
2859