



**FRONT ELEVATION**

**OVERVIEW**

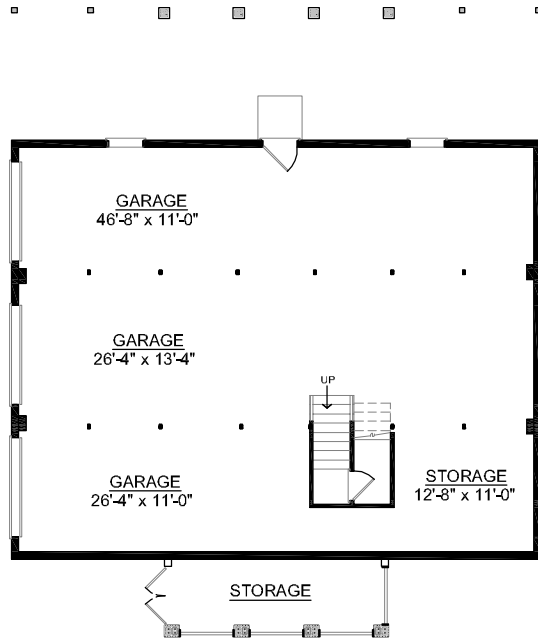
**TOTAL:** 2867 Sq. Ft.  
**BEDROOMS:** 4  
**BATHROOMS:** 3.5

- Perfect Open Plan for Entertaining Guests
- Spacious Great Room with Striking Fireplace and Many Extras Including Built-In Bookcase, Entertainment Center, and Wet Bar
- Spacious Gourmet Kitchen Adjoins Sunny Breakfast Area and Enters into Formal Dining Room with Tray Ceiling
- First Floor Master Suite Flaunts 2 Walk-In Closets, Dual Vanity Sink, and Luxurious Whirlpool Tub
- Second Floor Complete with 3 Bedrooms and Quiet Study
- 9' Ceiling Heights Throughout First Floor; 8' on Second Floor

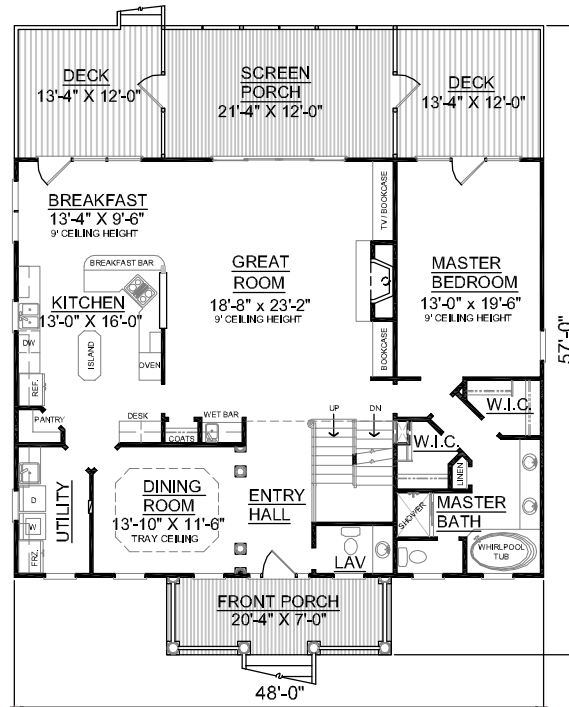
First Floor	1824	Sq. Ft.
Second Floor	1043	Sq. Ft.
Finished Ground Floor	---	Sq. Ft.
Garage	1824	Sq. Ft.
Deck	320	Sq. Ft.
Screen Porch	256	Sq. Ft.
Front Porch	142	Sq. Ft.
Overall Height	35'-7"	



**REAR ELEVATION**

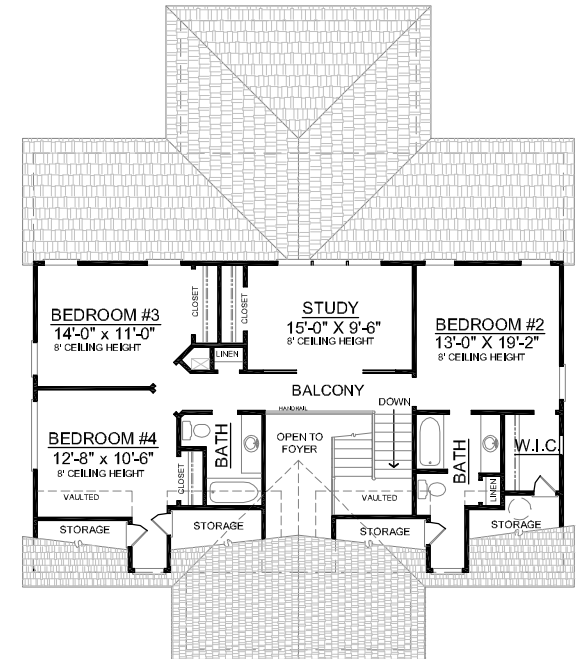


**GROUND FLOOR PLAN**



**FIRST FLOOR PLAN**  
Plan No.

**2867**



**SECOND FLOOR PLAN**