



FRONT ELEVATION, SHOWS OPT. BRICK FOUNDATION

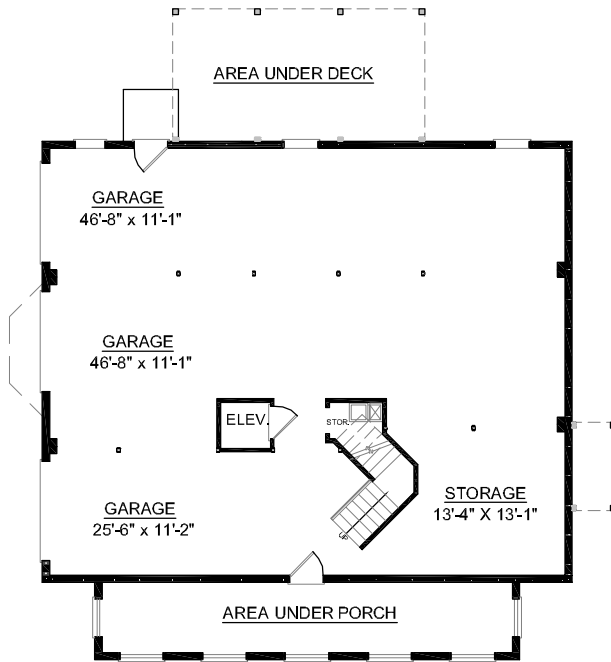
**OVERVIEW**

- TOTAL:** 2877 Sq. Ft.  
**BEDROOMS:** 4  
**BATHROOMS:** 3.5
- 9' Ceiling Heights Throughout First Floor; 8' on Second Floor
  - Spacious Great Room with Cozy Fireplace Adjoins Sunroom that Leads onto Roomy Rear Deck
  - Spacious Gourmet Kitchen Complete with Large Island, Pantry and Eat-In Breakfast Area with Bay Window
  - Second Floor Bridge Overlooks Foyer and Great Room
  - First Floor Master Suite Flaunts Luxurious Bath with 2 Walk-In Closets, Dual Sink Vanity for Busy Mornings and Whirlpool Tub
  - Elegant Dining Room Accented with Columns and Tray Ceiling
  - 3 Bay Side Entry Garage with Storage
  - See Plan #2670 for Smaller Layout Without Sunroom

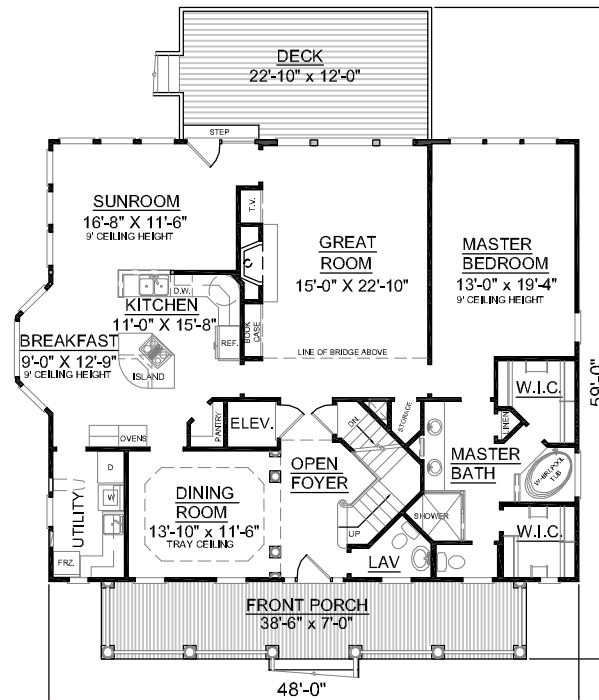


REAR ELEVATION

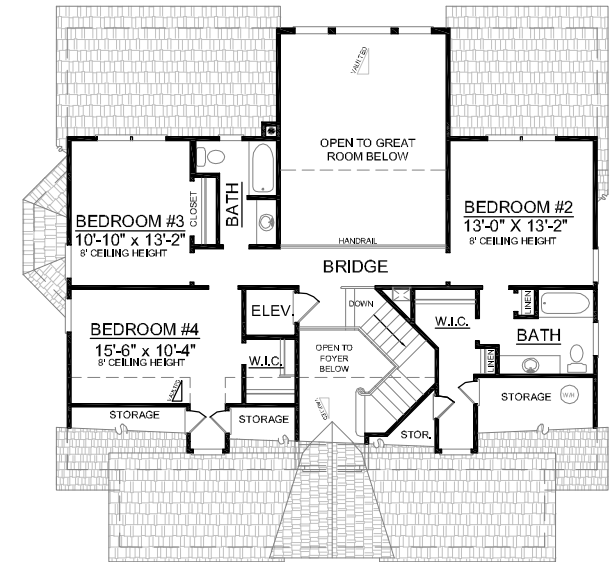
First Floor	1947	Sq. Ft.
Second Floor	930	Sq. Ft.
Finished Ground Floor	----	Sq. Ft.
Garage	1920	Sq. Ft.
Deck	274	Sq. Ft.
Screen Porch	-----	Sq. Ft.
Front Porch	270	Sq. Ft.
Overall Height	35'-2"	



GROUND FLOOR PLAN



FIRST FLOOR PLAN



SECOND FLOOR PLAN

Plan No.  
**2877**