



FRONT ELEVATION

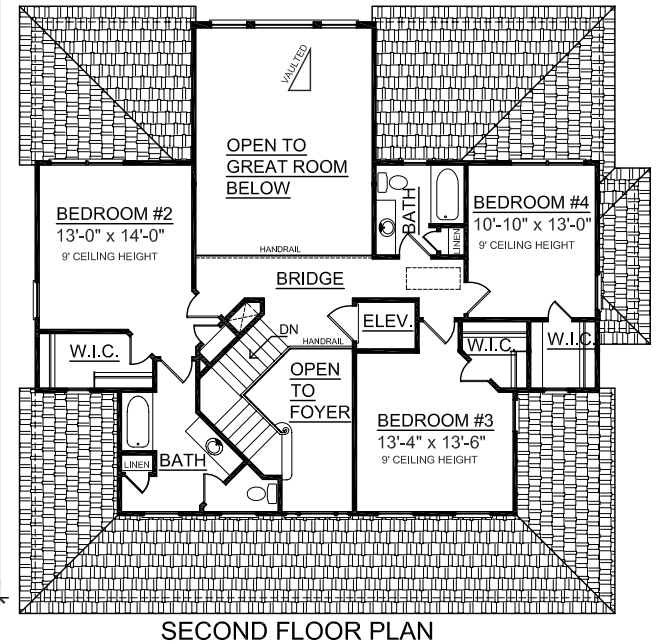
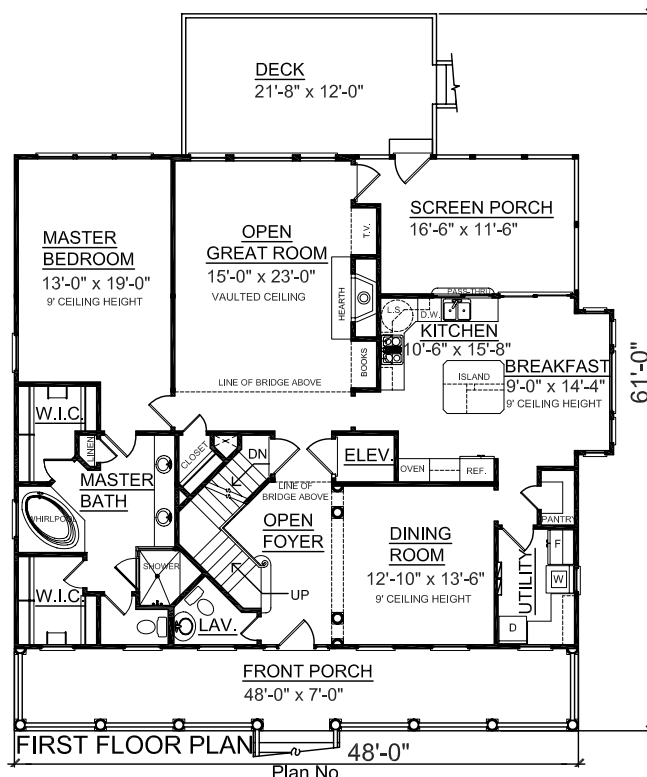
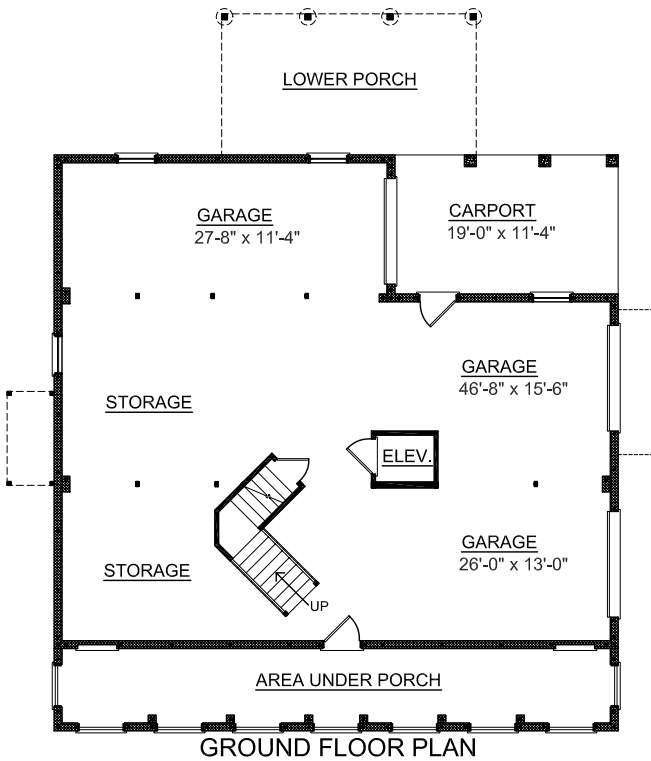
**OVERVIEW**

- TOTAL: 2880 Sq. Ft.  
 BEDROOMS: 4  
 BATHROOMS: 3.5
- 9' Ceiling Heights Throughout both First and Second Floors
  - Open Two Story Ceiling in Foyer and Great Room
  - Gas Fireplace in Great Room
  - Formal Dining Room with Decorative Columns
  - Abundant walk-in closets in all Bedrooms
  - First Floor Master Suite with Dual Walk-in Closets and Vanity
  - Master Bath has Relaxing Whirlpool and Separate Shower
  - Kitchen has Walk-in Pantry and Pass-thru onto Screened Porch
  - Elevator Space on All Floors



REAR ELEVATION

First Floor	1845 Sq. Ft.
Second Floor	1035 Sq. Ft.
Garage	1791 Sq. Ft.
Deck	260 Sq. Ft.
Screen Porch	208 Sq. Ft.
Front Porch	240 Sq. Ft.
Carport	225 Sq. Ft.
Overall Height	39'-4" +/-



Plan No.  
**2880-B**