



FRONT ELEVATION

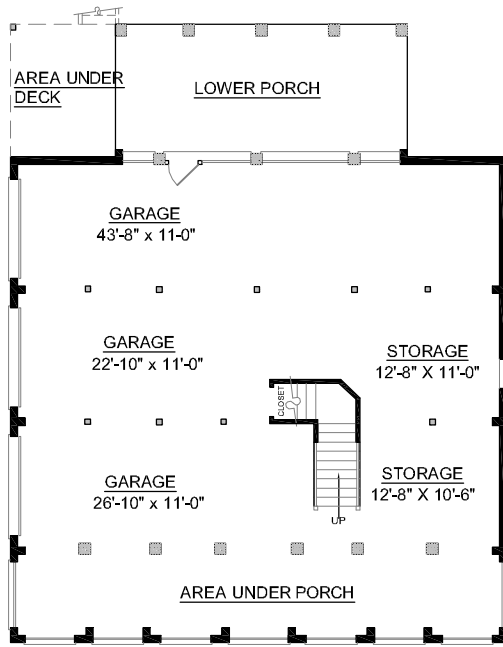
OVERVIEW

- TOTAL:** 2906 Sq. Ft.
BEDROOMS: 5
BATHROOMS: 3
- Two Story Entry with Adjacent Formal Living Room
 - 9' First Floor Ceiling Heights; 8' Second Floor
 - Full Length Inviting Front Porch
 - Spacious Kitchen Complete with Island Cooktop and Ample Counterspace Merges with Sunny Breakfast Area
 - Centrally Located Family Room with French Sliders Leads to Roomy Screen Porch
 - Captivating Second Floor Master Suite Showcases Large Bath with Double Vanities, Large Walk-In Closet, and Whirlpool Tub
 - 3 Bay Side Entry Garage with Abundant Storage

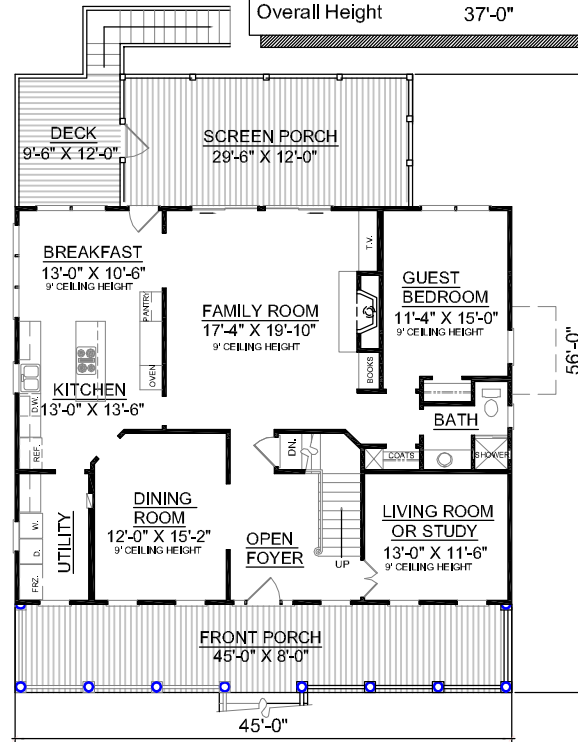
First Floor	1620	Sq. Ft.
Second Floor	1286	Sq. Ft.
Finished Ground Floor	---	Sq. Ft.
Garage	1620	Sq. Ft.
Deck	216	Sq. Ft.
Screen Porch	324	Sq. Ft.
Front Porch	360	Sq. Ft.
Overall Height	37'-0"	



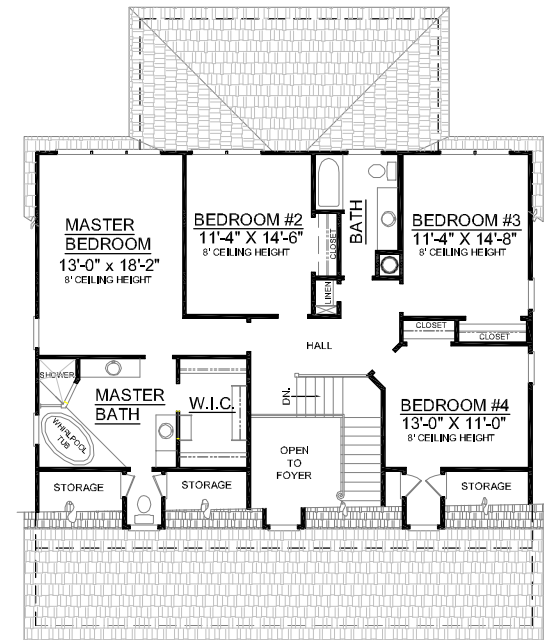
REAR ELEVATION



GROUND FLOOR PLAN



FIRST FLOOR PLAN



SECOND FLOOR PLAN

Plan No.

2906