



FRONT ELEVATION

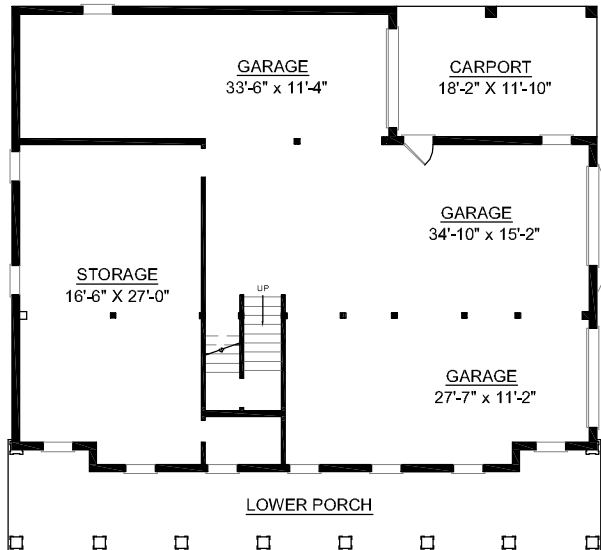
OVERVIEW

- TOTAL: 2971 Sq. Ft.
- BEDROOMS: 4
- BATHROOMS: 2.5
- 9' Ceiling Heights Throughout First Floor; 8' on Second Floor
- Front Elevation is Enhanced by Upper and Lower Porches and Accented with Dormers on Soaring Roof Line
- Centrally Located Spacious Great Room has Deck and Sunroom Access Complete with Cozy Fireplace
- Deluxe First Floor Master Suite Boasts Private Sunroom Access, Roomy Bath, and Large Walk-In Closet
- Screen Porch with Convenient Access From Kitchen and Great Room Continues onto Large Rear Deck
- 3 Bay Side Entry Garage Complete with Large Storage Room
- See Plan #3506 for Elevator and Two Baths on Second Floor

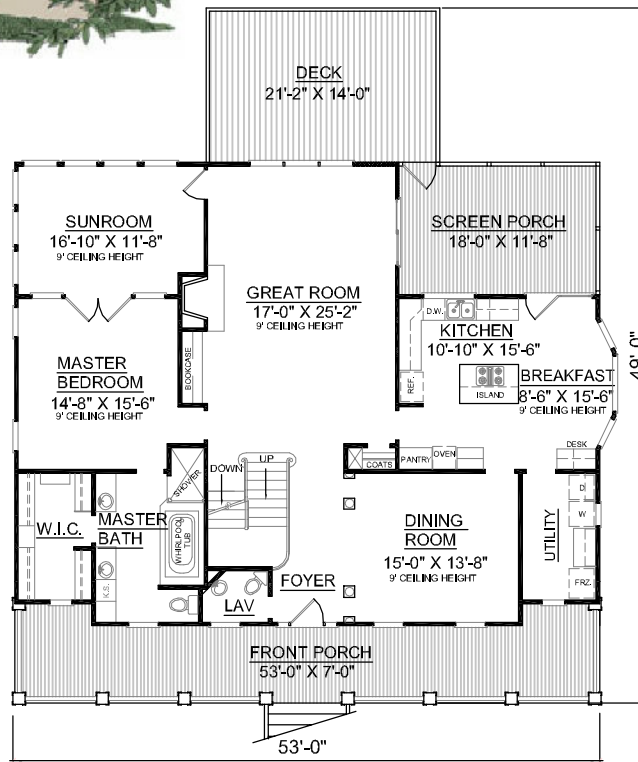


REAR ELEVATION

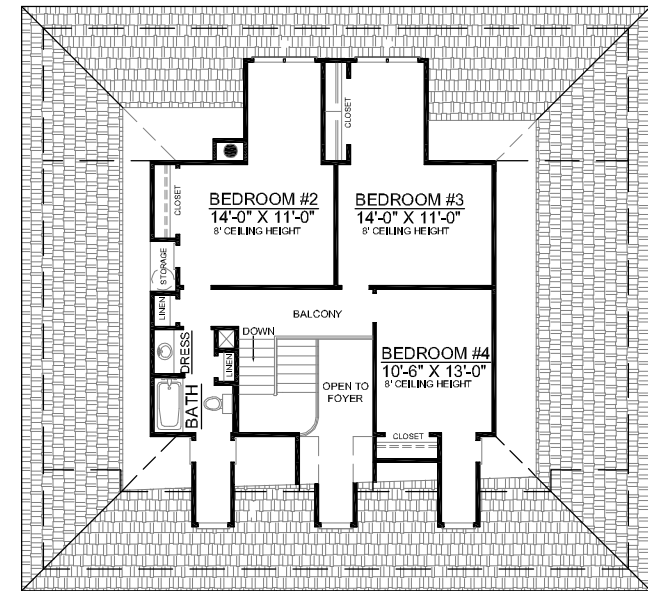
First Floor	1993	Sq. Ft.
Second Floor	882	Sq. Ft.
Finished Ground Floor	---	Sq. Ft.
Garage(with Storage)	1992	Sq. Ft.
Deck	296	Sq. Ft.
Screen Porch	220	Sq. Ft.
Front Porch	399	Sq. Ft.
Overall Height	36'-6"	



GROUND FLOOR PLAN



FIRST FLOOR PLAN



SECOND FLOOR PLAN

Plan No.
2971