



FRONT ELEVATION

**OVERVIEW**

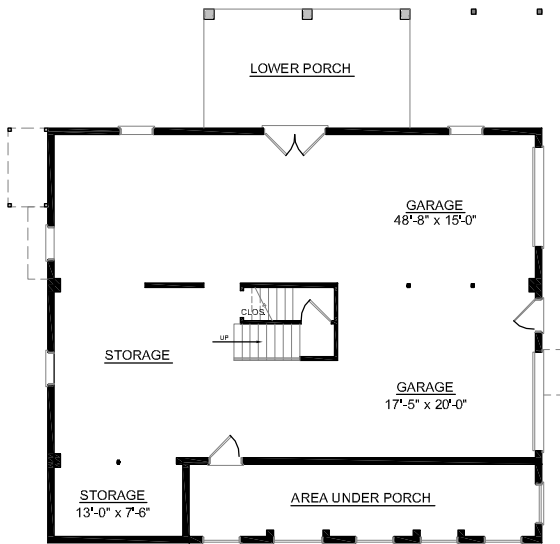
TOTAL: 2988 Sq. Ft.  
BEDROOMS: 4  
BATHROOMS: 3.5

- Unique Front Elevation for Fabulous Curb Appeal
- Spacious Great Room with Cozy Fireplace
- 9' Ceiling Heights Throughout First and Second Floor
- Superb Kitchen With Cooktop Island and Breakfast Bar Opens Into Great Family Breakfast Area
- Exquisite Master Bedroom with Pampering Bath Boasts Decorative Tray Ceiling
- Sizable Second Floor Bedrooms Each With Walk-In Closets
- Two Charming Upper Decks Overlook Front, Great for Picturesque Views

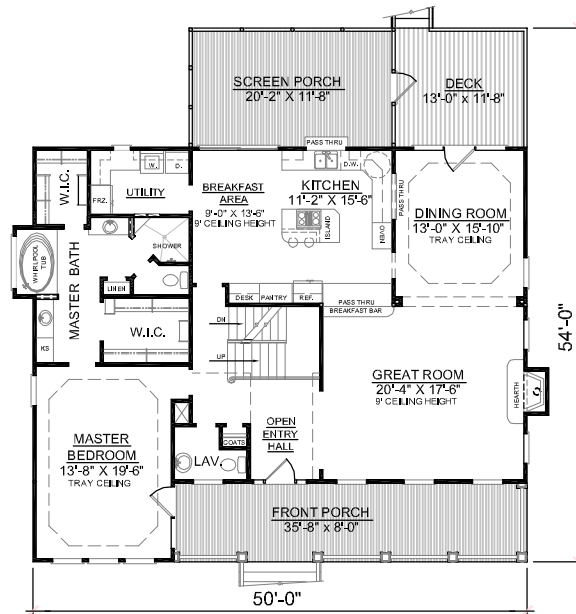
First Floor	1830	Sq. Ft.
Second Floor	1158	Sq. Ft.
Finished Ground Floor	-----	Sq. Ft.
Garage	1815	Sq. Ft.
Decks	399	Sq. Ft.
Screen Porch	240	Sq. Ft.
Front Porch	252	Sq. Ft.
Overall Height	36'-4"	



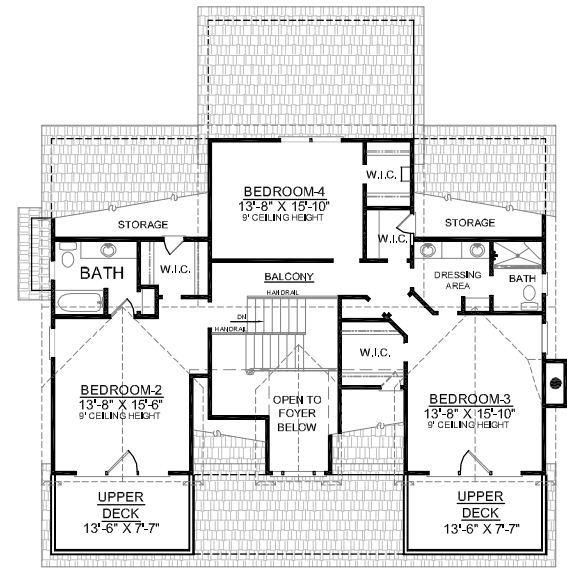
REAR ELEVATION



GROUND FLOOR PLAN



FIRST FLOOR PLAN



SECOND FLOOR PLAN

Plan No.  
**2988**