



**OVERVIEW**

**TOTAL:** 3008 Sq. Ft.  
**BEDROOMS:** 3  
**BATHROOMS:** 3  
 -9' Ceiling Heights on First and on Second Floor  
 -Two Story foyer and Great room Infused with Light and Space  
 -Kitchen Open to Breakfast Area  
 -Second Floor Master Suite Features 2 Walk-In Closets, Dual Sink Vanity, Separate Shower, and Relaxing 72" Whirlpool Tub  
 -Convenient Elevator Accessible to All Floors  
 -Rear Deck Great for Entertaining  
 -3 Bay Side Entry Garage with Abundant Storage  
 -Concrete Block Pier type construction

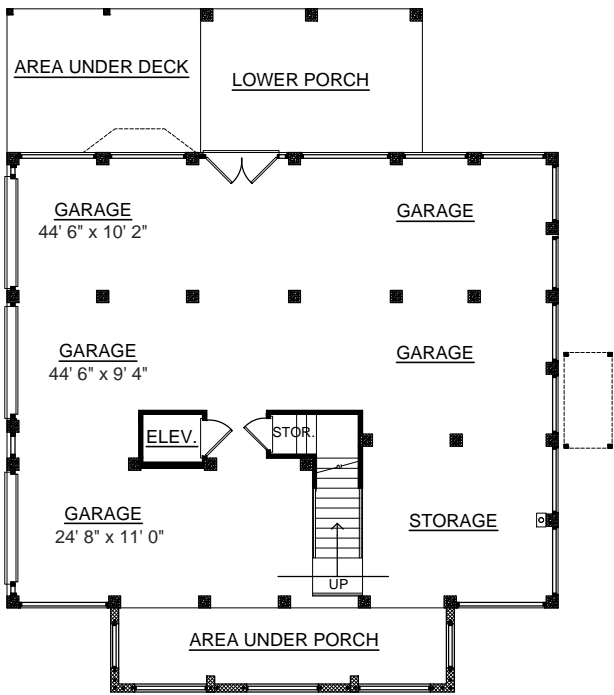
First Floor	1761 Sq. Ft.
Second Floor	1247 Sq. Ft.
Garage	1748 Sq. Ft.
Screen Porch	222 Sq. Ft.
Front Porch	201 Sq. Ft.
Rear Deck	182 Sq. Ft.
Upper Deck	222 Sq. Ft.
Overall Height	35'-6"



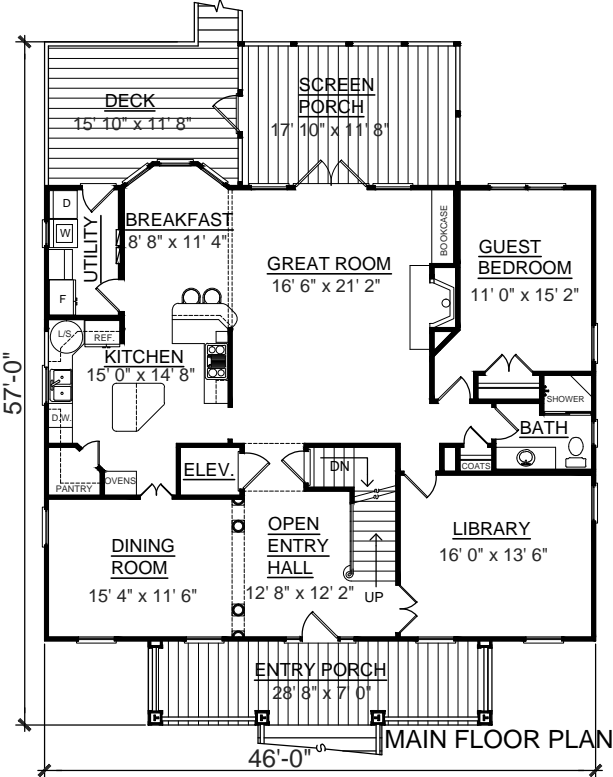
**FRONT ELEVATION**



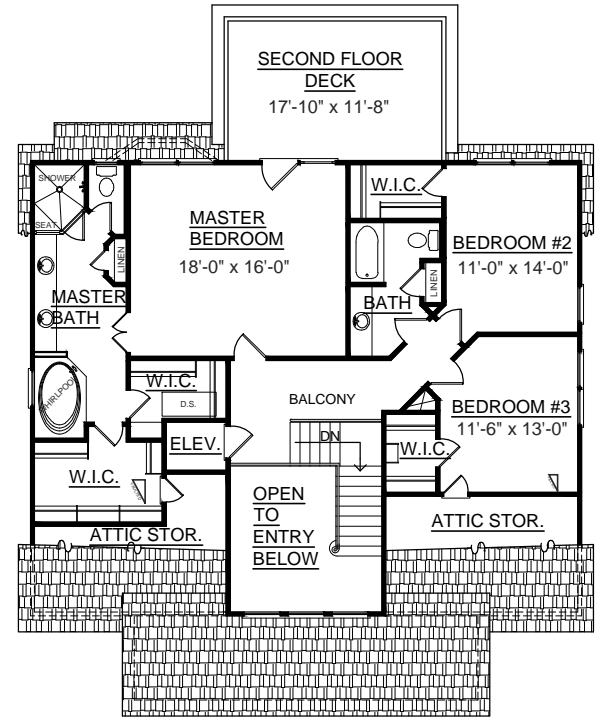
**REAR ELEVATION**



**GROUND FLOOR PLAN**



**MAIN FLOOR PLAN**



**SECOND FLOOR PLAN**