



FRONT ELEVATION

**OVERVIEW**

**TOTAL:** 3049 Sq. Ft.

**BEDROOMS:** 4

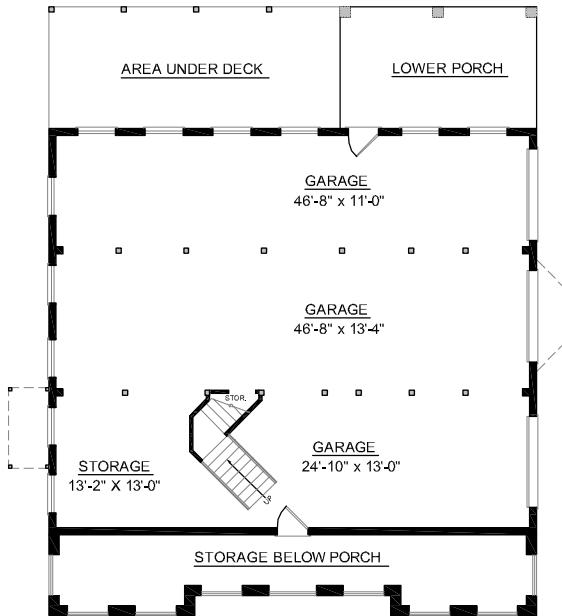
**BATHROOMS:** 3.5

- 9' Ceiling Heights Throughout First Floor; 8' on Second Floor
- Inviting Full Length Front Porch Ushers Guests into Impressive Open Foyer
- Large Open Great Room with Vaulted Ceiling Enhanced by Two Story Soaring Windows and Cozy Fireplace
- Kitchen Features Include Large Island with Cooktop, Pantry, Breakfast Area with Bay Window, and Brightened by Expansive Glass in Adjoining Sunroom
- Three Spacious Bedrooms with Private Bath Access
- 3 Bay Side Entry Garage with Abundant Storage
- 3See Plan #3245 W/Elevator Space

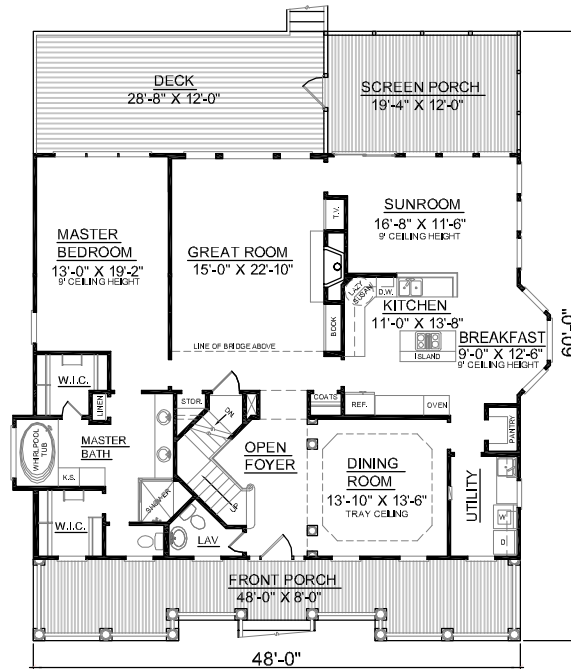


REAR ELEVATION

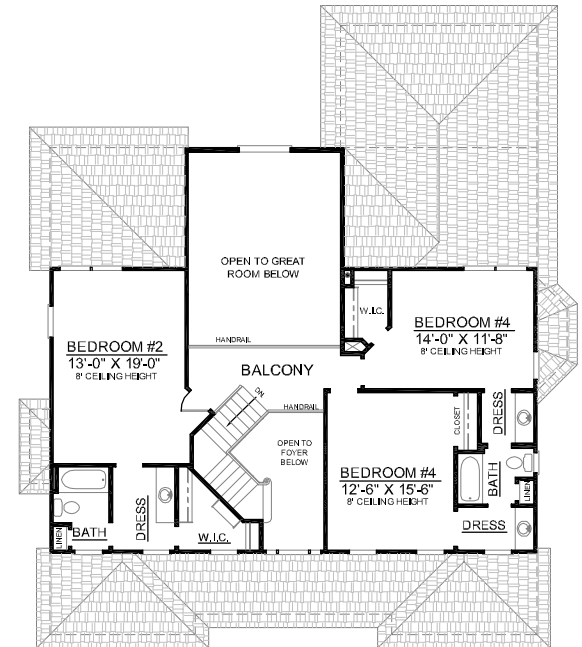
First Floor	1959	Sq. Ft.
Second Floor	1090	Sq. Ft.
Finished Ground Floor	-----	Sq. Ft.
Garage	1920	Sq. Ft.
Deck	344	Sq. Ft.
Screen Porch	232	Sq. Ft.
Front Porch	345	Sq. Ft.
Overall Height	36'-10"	



GROUND FLOOR PLAN



FIRST FLOOR PLAN



SECOND FLOOR PLAN