



FRONT ELEVATION

OVERVIEW

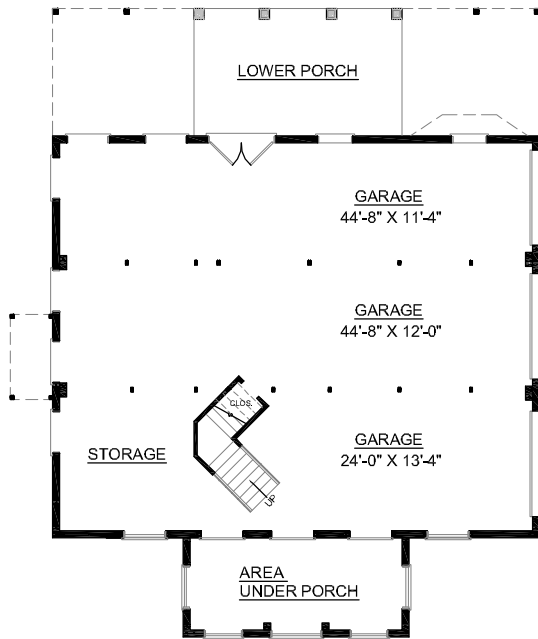
TOTAL: 3062 Sq. Ft.
BEDROOMS: 5
BATHROOMS: 3.5

- Impressive Open Foyer Overlooked by Second Floor Bridge
- Elegant Dining Room Surrounded by Decorative Columns and Tray Ceilings
- Spacious Master Bedroom with Private Deck Access
- Stunning Master Bath with Two Walk-In Closets
- Cheery Breakfast Room Opens to Lovely Kitchen
- Second Floor Four Bedrooms Complete with Private Baths
- 3 Bay Side Entry Garage with Ample Storage Space
- 9' Ceiling Heights Throughout First and Second Floors

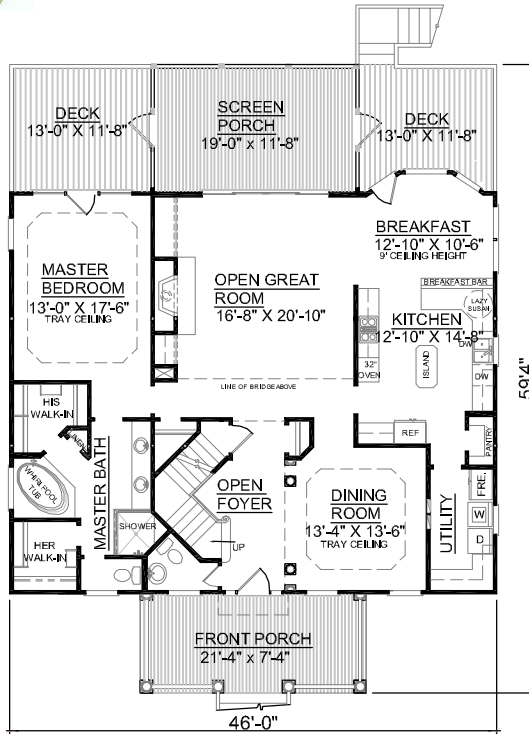


REAR ELEVATION

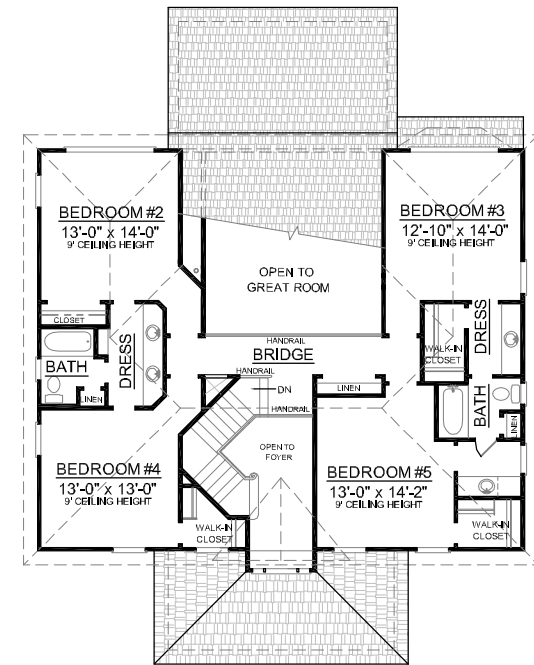
First Floor	1764	Sq. Ft.
Second Floor	1299	Sq. Ft.
Finished Ground Floor	-----	Sq. Ft.
Garage	1748	Sq. Ft.
Deck	300	Sq. Ft.
Screen Porch	236	Sq. Ft.
Front Porch	199	Sq. Ft.
Overall Height	37'-11"	



GROUND FLOOR PLAN



FIRST FLOOR PLAN
Plan No.



SECOND FLOOR PLAN