



**FRONT ELEVATION**

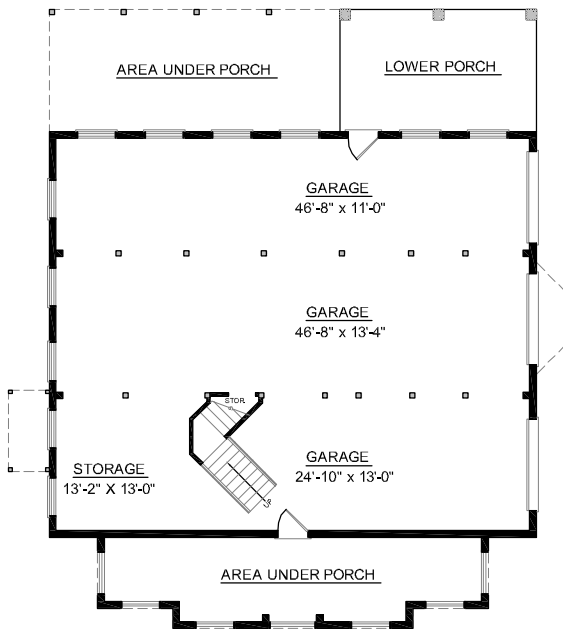
**OVERVIEW**

- TOTAL:** 3069 Sq. Ft.  
**BEDROOMS:** 4  
**BATHROOMS:** 3.5
- 9' Ceiling Height Throughout First Floor; 8' on Second Floor
  - Open Two Story Foyer Adjoins Formal Dining Room Bordered with Elegant Tray Ceiling and Decorative Columns
  - Vaulted Great Room with Two Story Arch Top Windows
  - Expansive Windows in Sunroom Infuse Home with Light
  - Second Floor Features "Jack and Jill" Bath Between Bedroom #3 and Bedroom #4
  - First Floor Master Suite Showcases Striking Bath Complete with 2 Walk-In Closets, Dual Sink Vanity, and Relaxing Whirlpool Tub
  - See Plan #3568 for Elevator Space and Second Floor Playroom

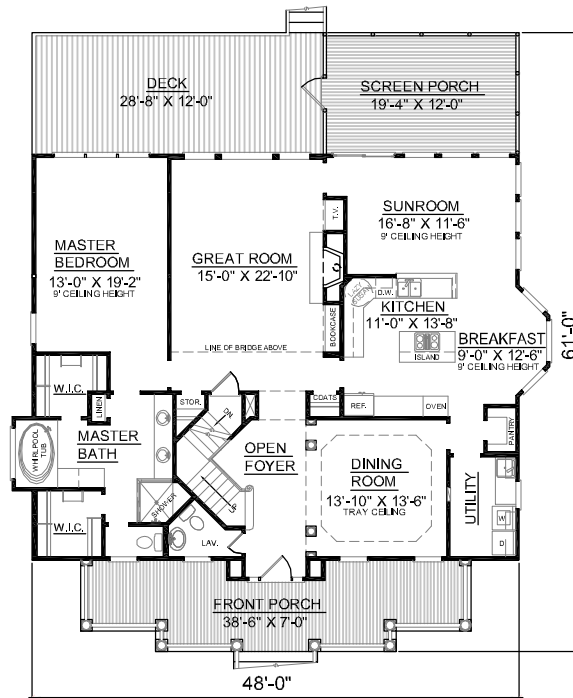


**REAR ELEVATION**

First Floor	1978	Sq. Ft.
Second Floor	1091	Sq. Ft.
Finished Ground Floor	-----	Sq. Ft.
Garage	1920	Sq. Ft.
Deck	344	Sq. Ft.
Screen Porch	232	Sq. Ft.
Front Porch	298	Sq. Ft.
Overall Height	36'-8"	

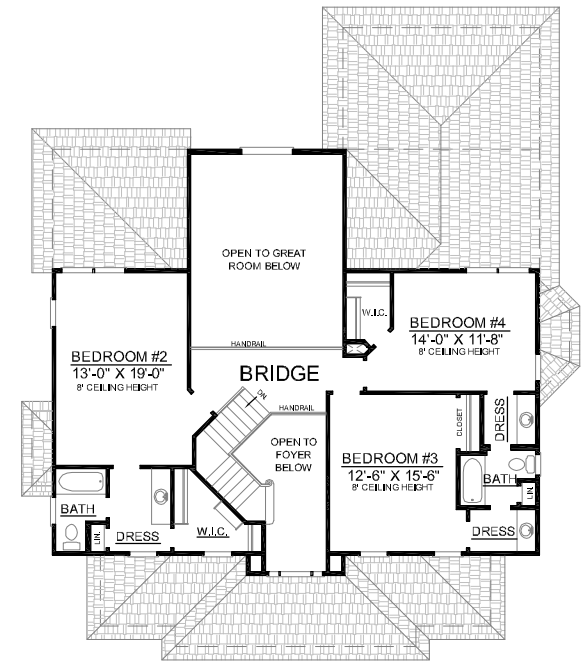


**GROUND FLOOR PLAN**



**FIRST FLOOR PLAN**  
Plan No.

**3069**



**SECOND FLOOR PLAN**