



FRONT ELEVATION

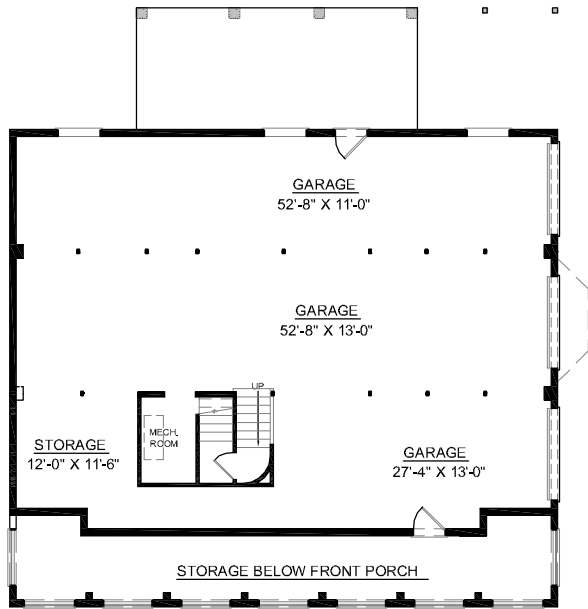
OVERVIEW

- TOTAL:** 3090 Sq. Ft.
BEDROOMS: 3
BATHROOMS: 3.5
- 9' Ceiling Heights Throughout First Floor; 8' on Second Floor
 - Distinguished Full Length Front Porch
 - Impressive Versatile Plan to Suit any Family
 - Expansive Great Room Boasts Cozy Fireplace and Access to Roomy Screen Porch
 - Rear Sunroom Open into Handsome Kitchen Complete with All the Amenities
 - Luxurious Master Suite Showcases Private Study, and Pampering Bath Complete with Whirlpool Tub
 - Second Floor Bedrooms Include Private Bath and Additional Study
 - ASee Plan #3042 for Elevator Space

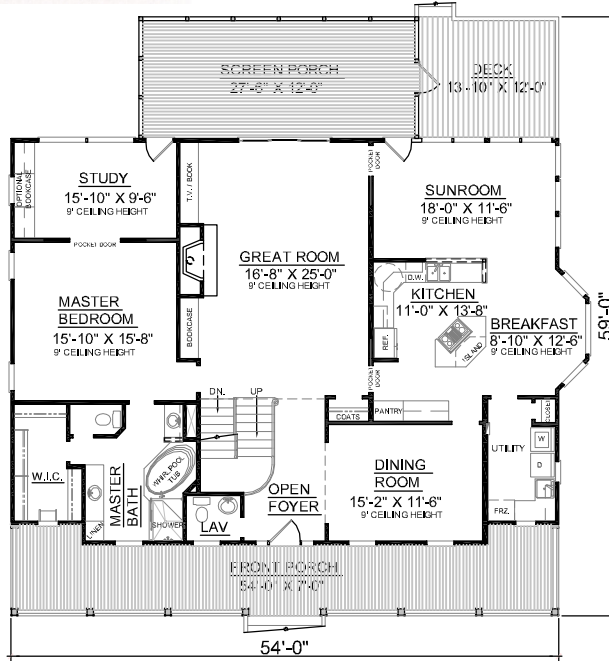
First Floor	2159	Sq. Ft.
Second Floor	931	Sq. Ft.
Finished Ground Floor	-----	Sq. Ft.
Garage	2132	Sq. Ft.
Deck	166	Sq. Ft.
Screen Porch	338	Sq. Ft.
Front Porch	406	Sq. Ft.
Overall Height	35'-2"	



REAR ELEVATION



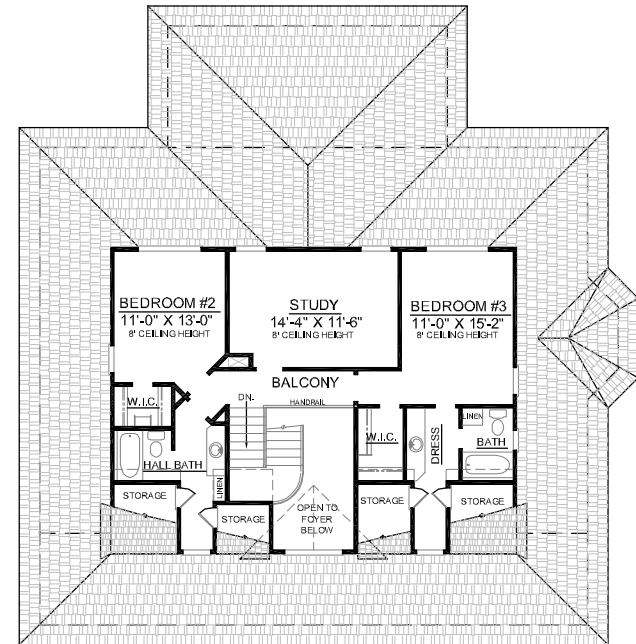
GROUND FLOOR PLAN



FIRST FLOOR PLAN

Plan No.

3090



SECOND FLOOR PLAN