



FRONT ELEVATION

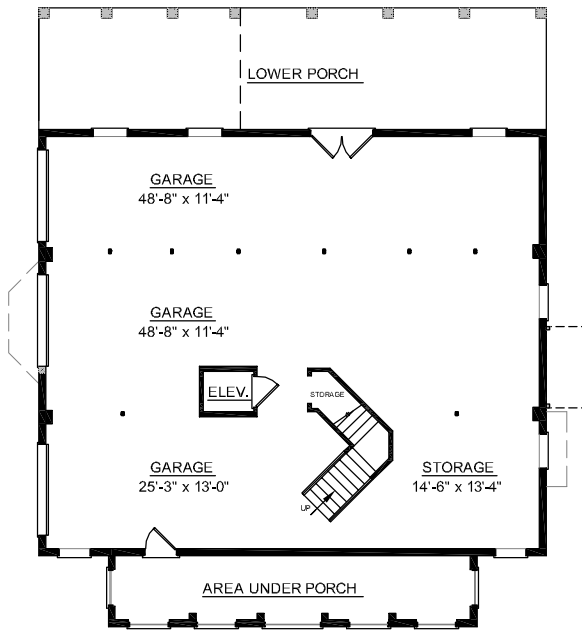
OVERVIEW

- TOTAL: 3181 Sq. Ft.
- BEDROOMS: 4
- BATHROOMS: 3.5
- 9' Ceiling Height Throughout First and Second Floor
- Open Two Story Foyer Adjoins Formal Dining Room Separated by Elegant Decorative Columns
- Convenient Elevator Accessible to all Floors
- Expansive Windows in Sunroom and Two Story Great Room Infuse Home with Light and Space
- Unique Front Elevation with 3 Shed Dormers
- First Floor Master Suite Showcases Striking Bath Complete with 2 Walk-In Closets, Dual Sink Vanity, and Relaxing Whirlpool Tub

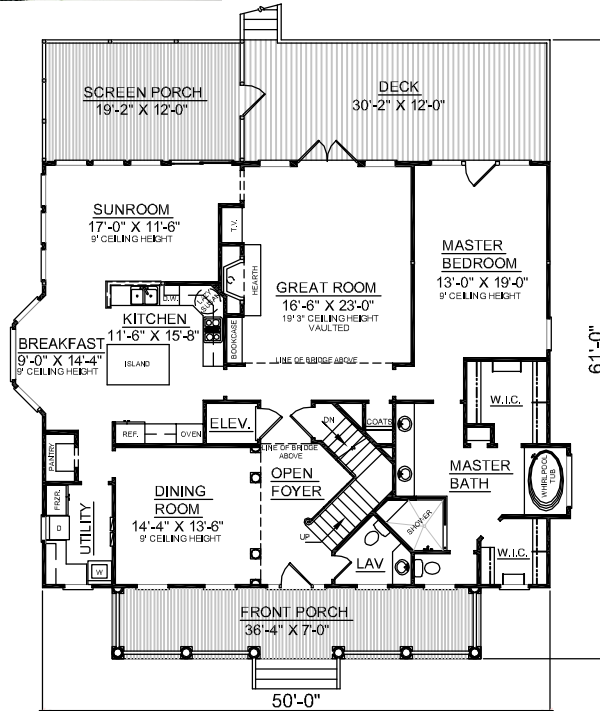


REAR ELEVATION

First Floor	2142	Sq. Ft.
Second Floor	1039	Sq. Ft.
Total Heated	3181	Sq. Ft.
Garage	2100	Sq. Ft.
Deck	362	Sq. Ft.
Screen Porch	238	Sq. Ft.
Front Porch	254	Sq. Ft.
Overall Height	34'-7"	



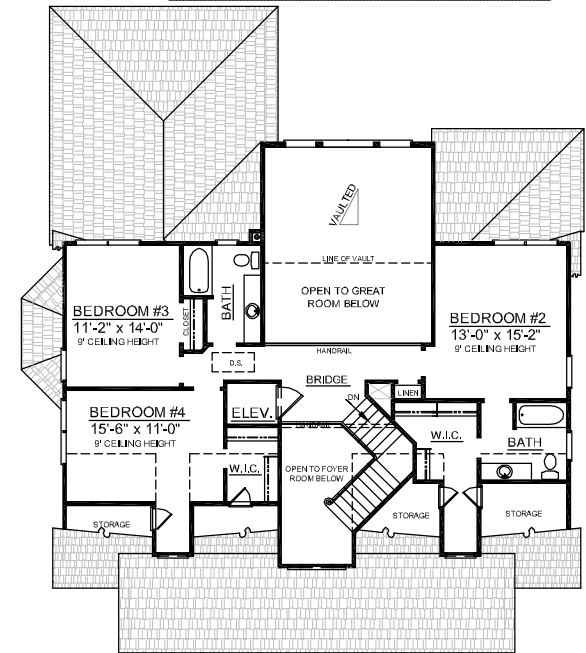
GROUND FLOOR PLAN



FIRST FLOOR PLAN

Plan No.

3181-A



SECOND FLOOR PLAN