



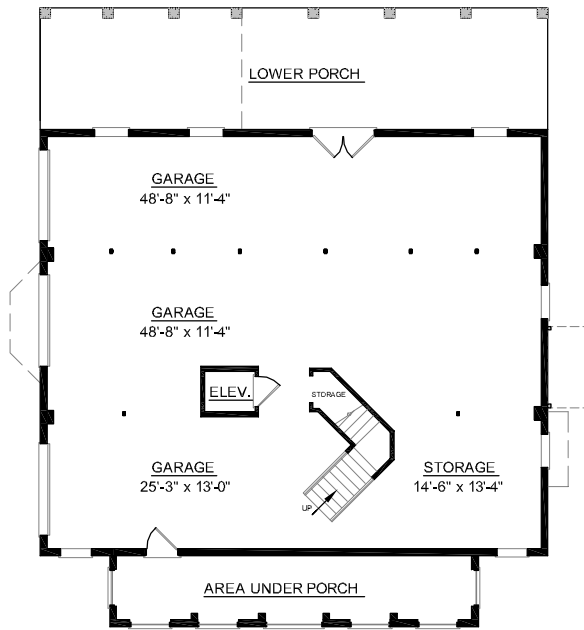
OVERVIEW

- TOTAL: 3181 Sq. Ft.
- BEDROOMS: 4
- BATHROOMS: 3.5
- 9' Ceiling Height Throughout First and Second Floor
- Open Two Story Foyer Adjoins Formal Dining Room Separated by Elegant Decorative Columns
- Convenient Elevator Accessible to all Floors
- Expansive Windows in Sunroom and Two Story Great Room Infuse Home with Light and Space
- Unique Front Elevation with 3 Shed Dormers
- First Floor Master Suite Showcases Striking Bath Complete with 2 Walk-In Closets, Dual Sink Vanity, and Relaxing Whirlpool Tub
- Plan 3181-A has Shed Roof on Dormers as per Plan #3218

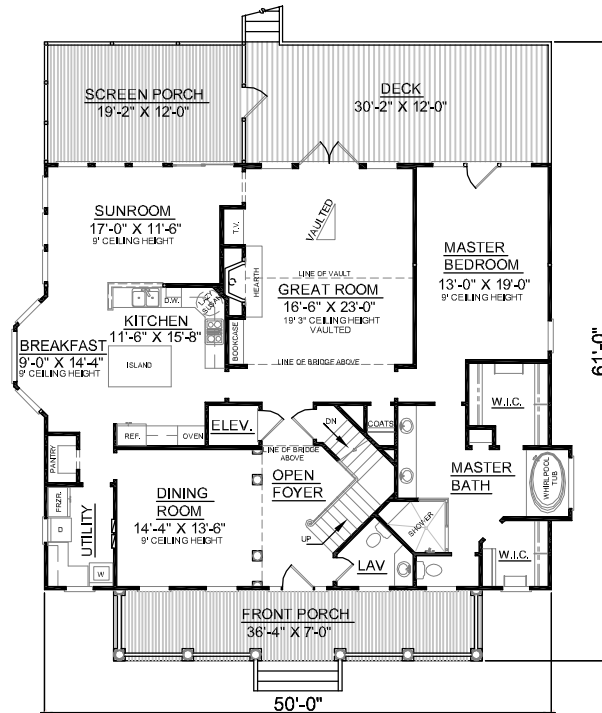


REAR ELEVATION

First Floor	2142	Sq. Ft.
Second Floor	1039	Sq. Ft.
Finished Ground Floor	---	Sq. Ft.
Garage	2100	Sq. Ft.
Deck	362	Sq. Ft.
Screen Porch	238	Sq. Ft.
Front Porch	254	Sq. Ft.
Overall Height	34'-7"	



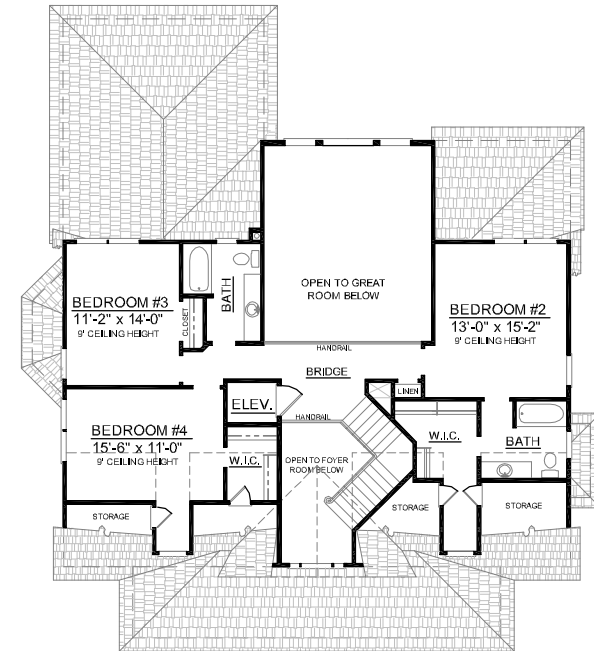
GROUND FLOOR PLAN



FIRST FLOOR PLAN

Plan No.

3181-B



SECOND FLOOR PLAN