



FRONT ELEVATION

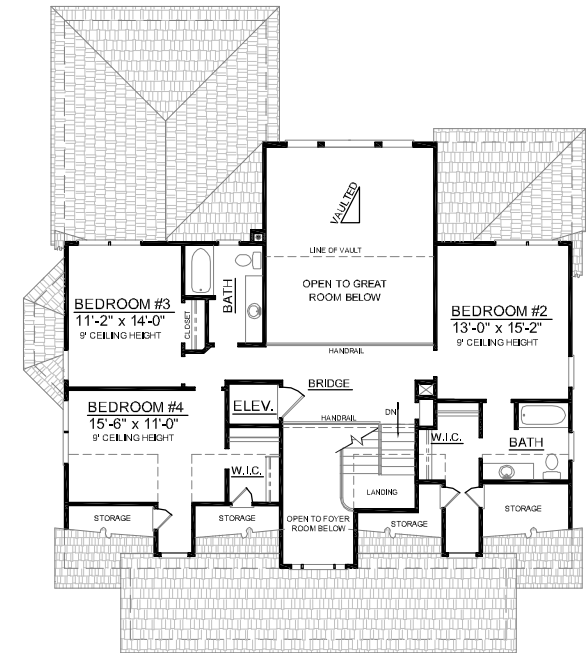
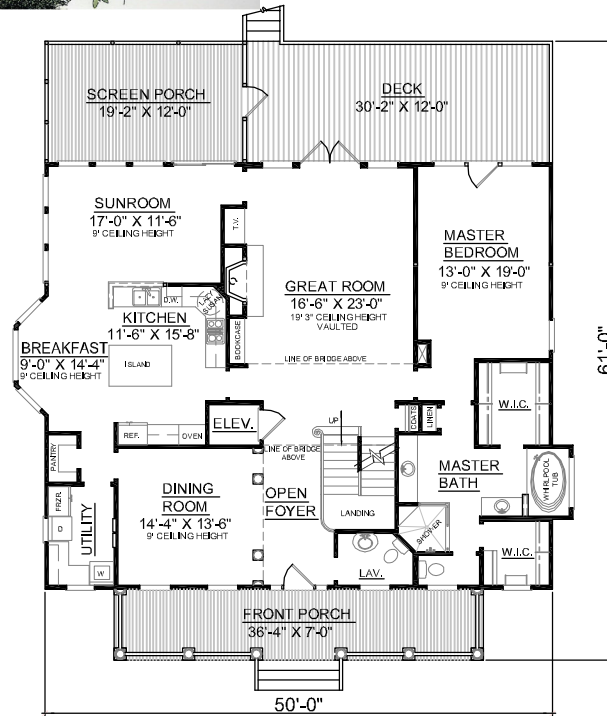
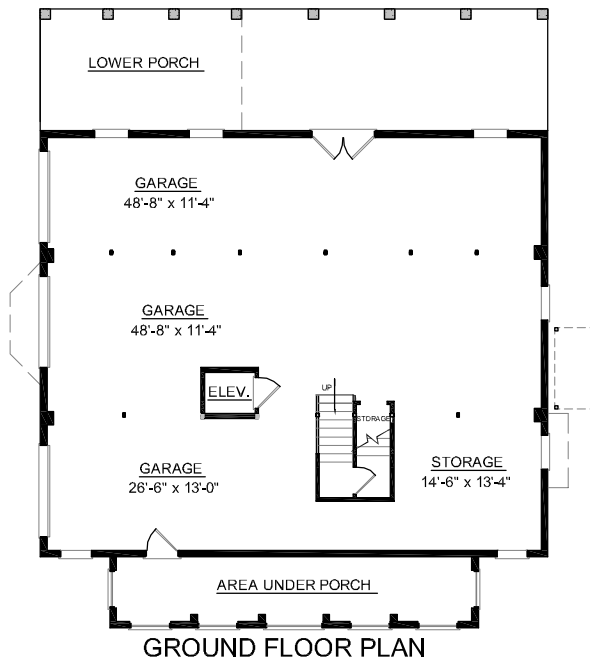
OVERVIEW

- TOTAL:** 3218 Sq. Ft.
BEDROOMS: 4
BATHROOMS: 3.5
- 9' Ceiling Height Throughout First and Second Floor
 - Open Two Story Foyer Adjoins Formal Dining Room Separated by Elegant Decorative Columns
 - Convenient Elevator Accessible to all Floors
 - Expansive Windows in Sunroom and Two Story Great Room Infuse Home with Light and Space
 - Unique Front Elevation with 3 Shed Dormers
 - First Floor Master Suite Showcases Striking Bath Complete with 2 Walk-In Closets, Dual Sink Vanity, and Relaxing Whirlpool Tub
 - See Plan #3181-B for Angles Stairs



REAR ELEVATION

First Floor	2142	Sq. Ft.
Second Floor	1076	Sq. Ft.
Finished Ground Floor		Sq. Ft.
Garage	2100	Sq. Ft.
Deck	362	Sq. Ft.
Screen Porch	238	Sq. Ft.
Front Porch	254	Sq. Ft.
Overall Height	34'-7"	



Plan No.

3218-A