



FRONT ELEVATION

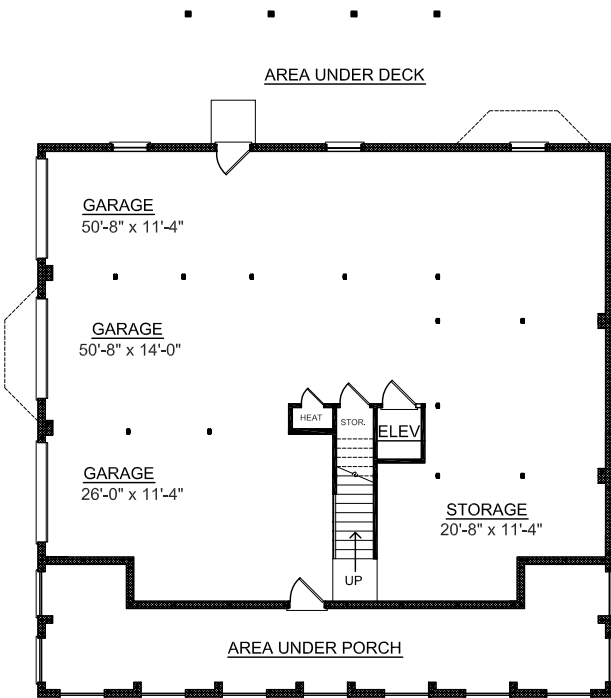
OVERVIEW

- TOTAL: 3226 Sq. Ft.
 BEDROOMS: 4
 BATHROOMS: 3.5
- 9' Ceilings Throughout First Floor, 9' on Second
 - Second Floor Balcony Overlooks Foyer and Vaulted Great Room with Two Story Windows
 - Impressive Entry Introduces Guests to Front-Facing Formal Dining Room and Stunning Library
 - Lovely First Floor Master Suite Brightened by Bay Window Showcases Luxurious Master Bath with Relaxing Whirlpool Tub
 - Handsome Kitchen Boasts Large Island, Walk-In Pantry and Opens up to Sunroom
 - 3 Bay Side Entry Garage Convenient Elevator to all Floors

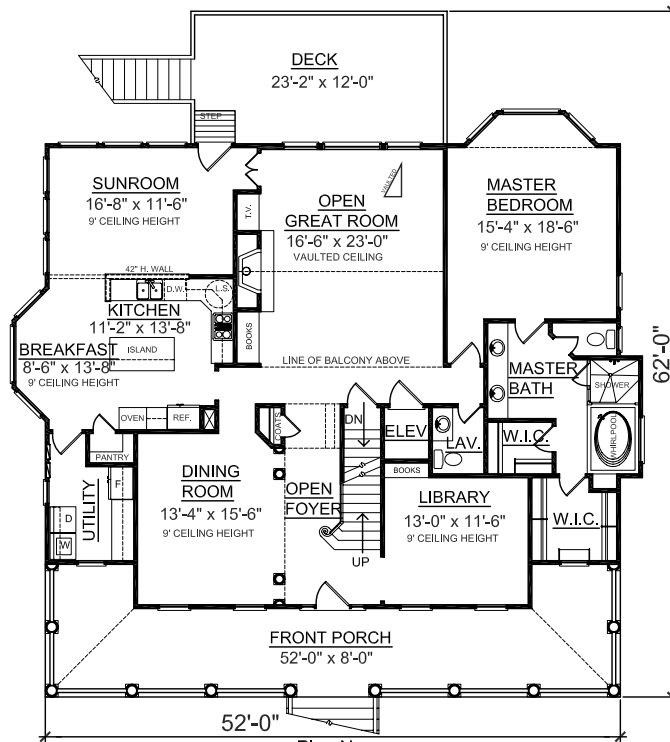


REAR ELEVATION

First Floor	2197 Sq. Ft.
Second Floor	1029 Sq. Ft.
Garage	2120 Sq. Ft.
Deck	278 Sq. Ft.
Front Porch	480 Sq. Ft.
Overall Height	35'-6"

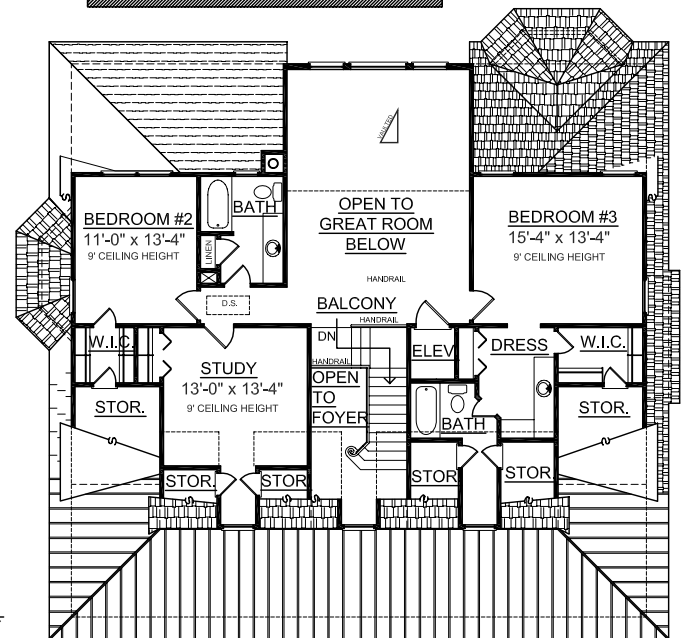


GROUND FLOOR PLAN



Plan No. FIRST FLOOR PLAN

3226



SECOND FLOOR PLAN