

**FRONT ELEVATION**



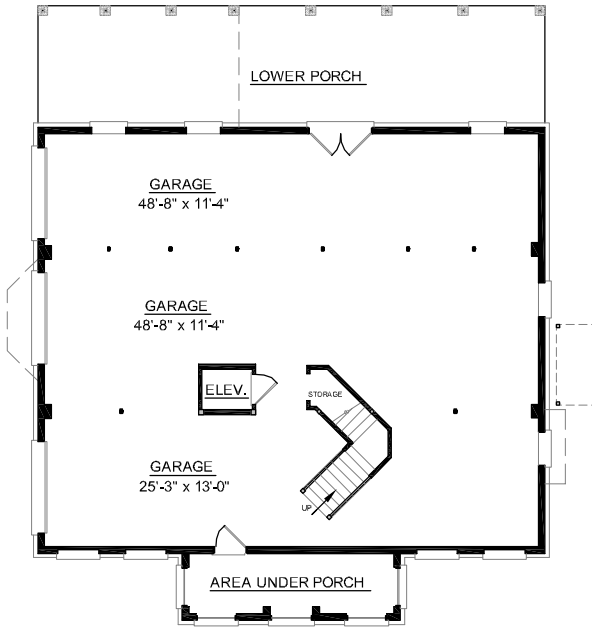
**OVERVIEW**

- TOTAL:** 3237 Sq. Ft.  
**BEDROOMS:** 4  
**BATHROOMS:** 3.5
- 9' Ceiling Height Throughout First and Second Floors
  - Open Two Story Foyer Adjoins Formal Dining Room Separated by Decorative Columns
  - Elevations are accented with Brick Veneer on Ground floor
  - Expansive Windows in Two Story Great Room and Sunroom Infuse the Home with Light and Space
  - Spacious Kitchen with Large Working Island and Counterspace
  - First Floor Master Suite Showcases Striking Bath Complete with 2 Walk-In Closets, Dual Sink Vanity, and Relaxing Whirlpool Tub

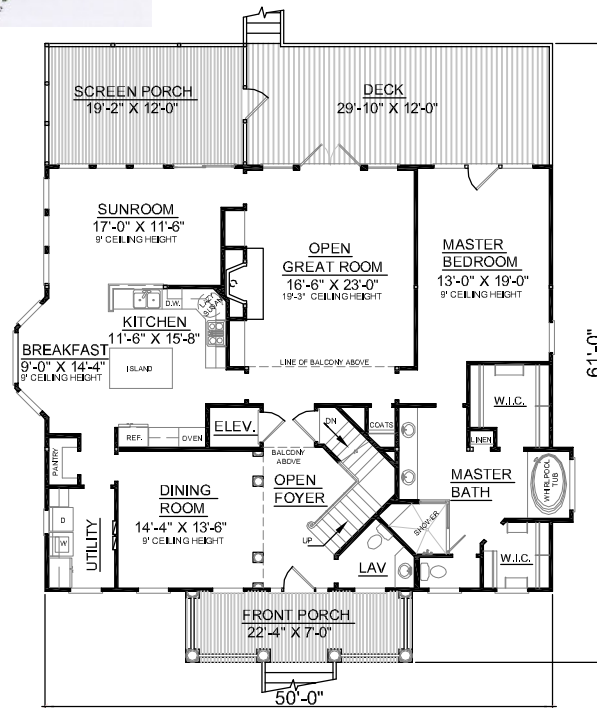


**REAR ELEVATION**

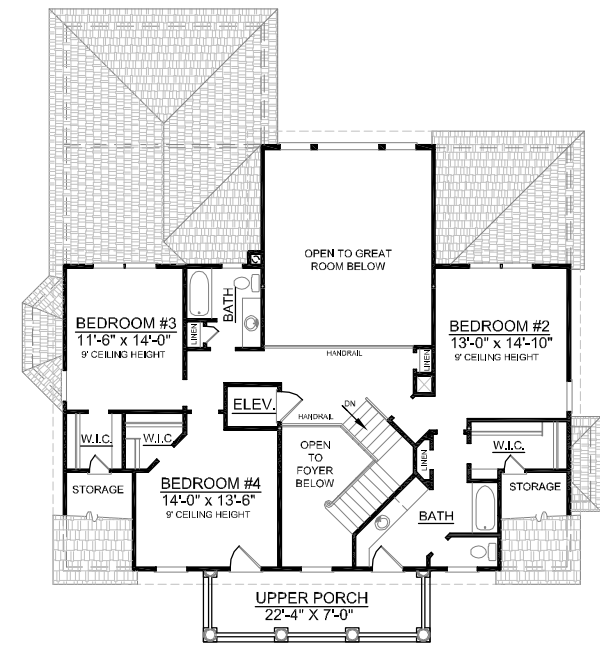
First Floor	2142	Sq. Ft.
Second Floor	1095	Sq. Ft.
Garage	2100	Sq. Ft.
Deck	362	Sq. Ft.
Screen Porch	238	Sq. Ft.
Front Porch	254	Sq. Ft.
Upper Porch	254	Sq. Ft.
<b>Overall Height</b>	<b>38'-8"</b>	



**GROUND FLOOR PLAN**



**FIRST FLOOR PLAN**  
Plan No.



**SECOND FLOOR PLAN**

**3237-A**