



FRONT ELEVATION

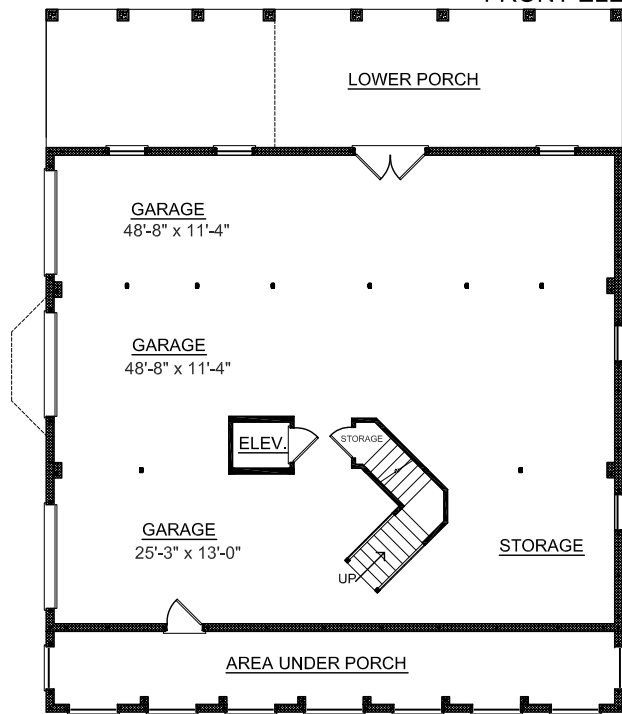
OVERVIEW

- TOTAL:** 3237 Sq. Ft.
BEDROOMS: 4
BATHROOMS: 3.5
- 9' Ceiling Height Throughout First and Second Floors
 - Open Two Story Foyer Adjoins Formal Dining Room Separated by Decorative Columns
 - Convenient Elevator Accessible to All Floors
 - Expansive Windows in Two Story Great Room and Sunroom Infuse the Home with Light and Space
 - Spacious Kitchen with Large Working Island and Counterspace
 - First Floor Master Suite Showcases Striking Bath Complete with 2 Walk-in Closets, Dual Sink Vanity, and Relaxing whirlpool tub

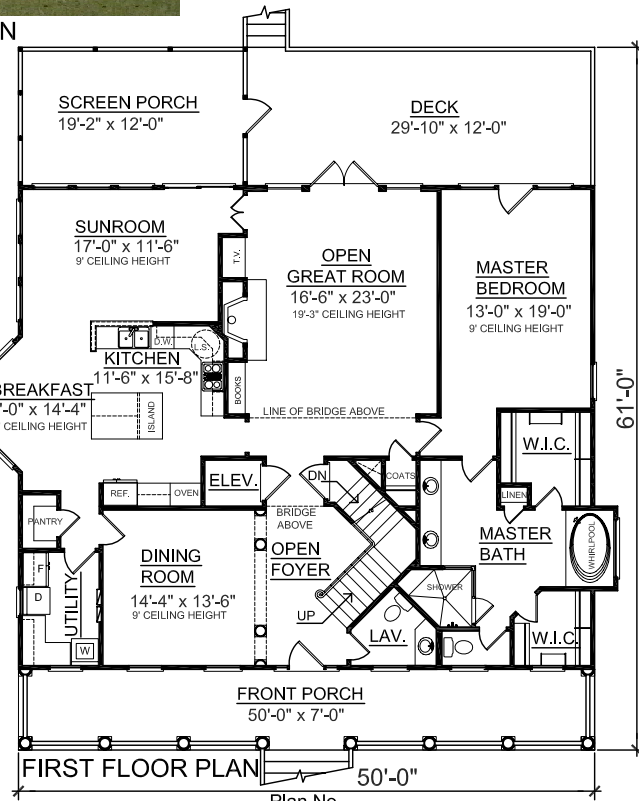


REAR ELEVATION

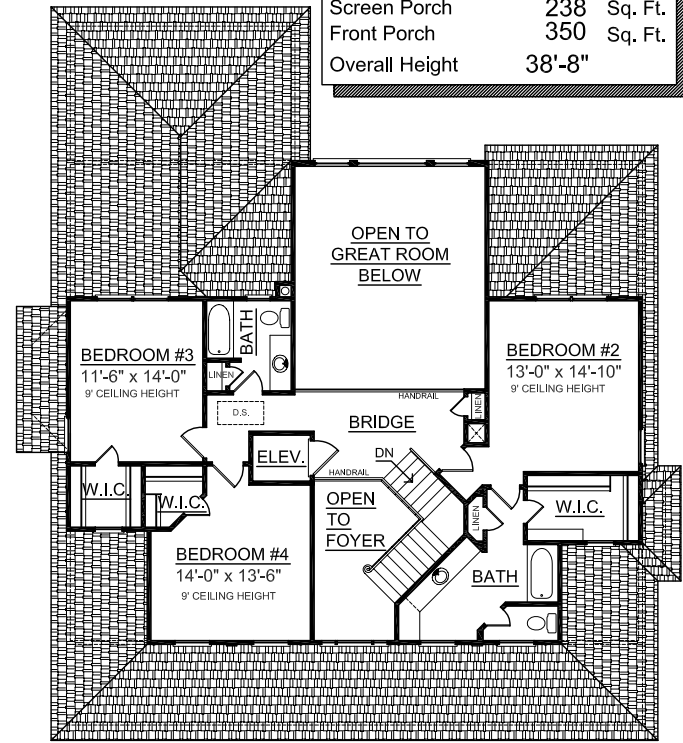
First Floor	2142 Sq. Ft.
Second Floor	1095 Sq. Ft.
Garage	2100 Sq. Ft.
Deck	362 Sq. Ft.
Screen Porch	238 Sq. Ft.
Front Porch	350 Sq. Ft.
Overall Height	38'-8"



GROUND FLOOR PLAN



3237-C



SECOND FLOOR PLAN