



FRONT ELEVATION

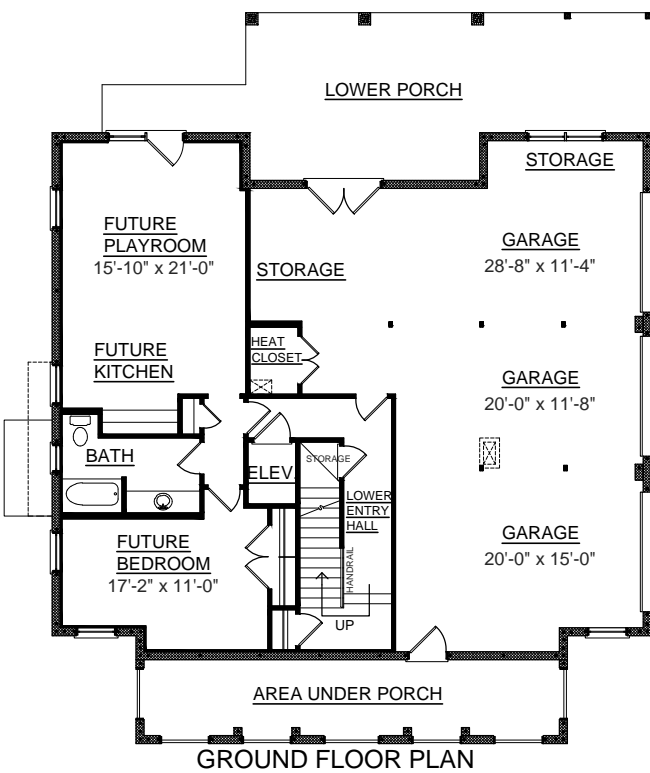
OVERVIEW

TOTAL: 3271 Sq. Ft.
 BEDROOMS: 3
 BATHROOMS: 3.5
 -10' Ceiling Heights on First and 9' Ceiling Heights on Second Floor
 -Two Story foyer and Great room with Screen Porch Access
 -Open Kitchen With Breakfast Area
 -First Floor Master Suite Features 2 Walk-In Closets, Dual Sink Vanity, Separate Shower, and Relaxing 72" Whirlpool Tub
 -Second Floor Features 2 Spacious Bedrooms & Media Room or 3rd Bedroom
 -Library or Study off Entry Hall
 -Convenient Elevator Accessible to All Floors
 -Rear Deck Great for Entertaining
 -3 Bay Side Entry Garage with Future Finished Basement

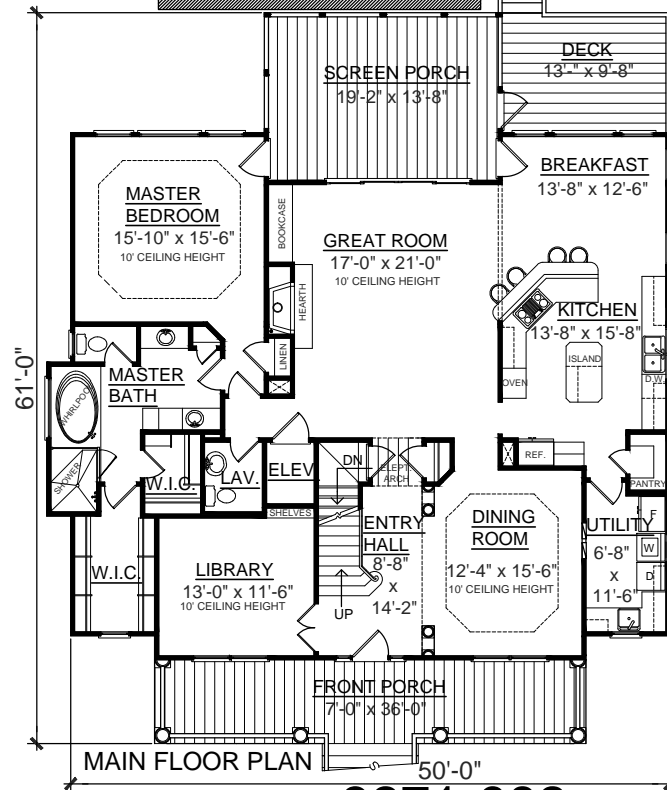
First Floor	2121 Sq. Ft.
Second Floor	1150 Sq. Ft.
Garage	1114 Sq. Ft.
Garage Heated	982 Sq. Ft.
Front Porch	252 Sq. Ft.
Screen Porch	275 Sq. Ft.
Deck	140 Sq. Ft.
Upper Deck	275 Sq. Ft.
Overall Height	38'-1"



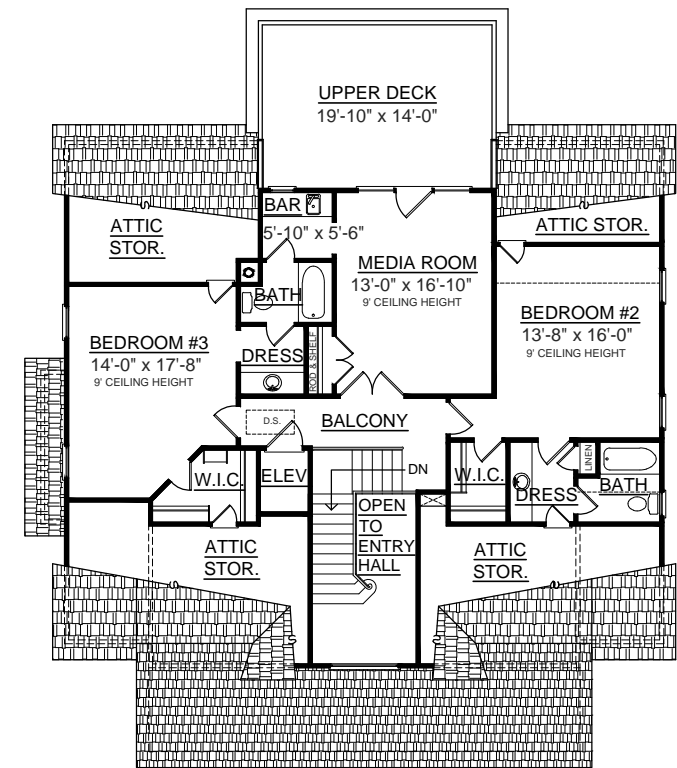
REAR ELEVATION



GROUND FLOOR PLAN



MAIN FLOOR PLAN



SECOND FLOOR PLAN