



FRONT ELEVATION

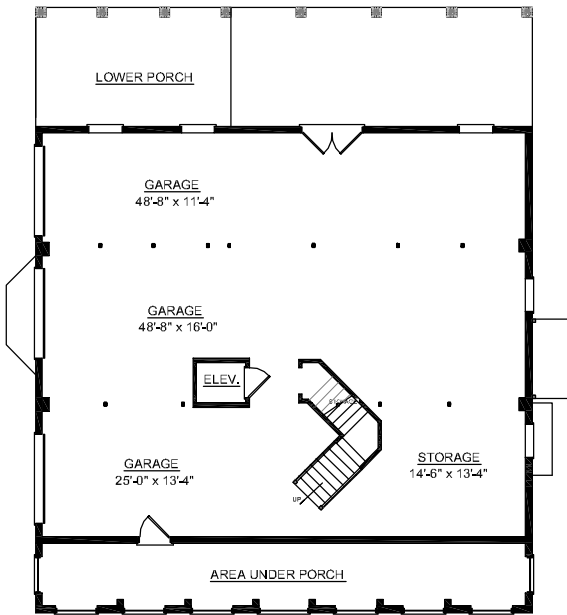
OVERVIEW

- TOTAL:** 3277 Sq. Ft.
BEDROOMS: 4
BATHROOMS: 3.5
- 9' Ceiling Height Throughout First and Second Floor
 - Open Two Story Foyer and Great Room
 - Dining Room Accented by Elegant Decorative Columns
 - Convenient Elevator Accessible to all Floors
 - Expansive Windows in Sunroom and Two Story Great Room
 - Infuse Home with Light and Space
 - Unique Front Elevation with Barrel Vaulted Entry
 - First Floor Master Suite Showcases Striking Bath Complete with 2 Walk-In Closets, Dual Sink Vanity, and Relaxing Whirlpool Tub



REAR ELEVATION

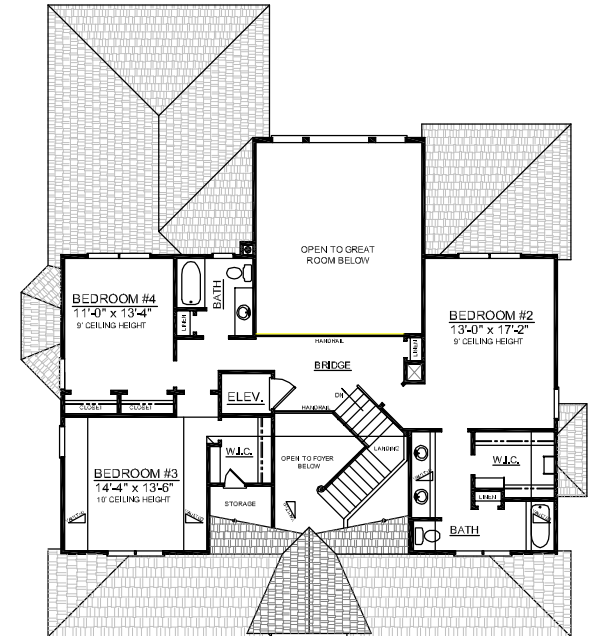
First Floor	2142	Sq. Ft.
Second Floor	1135	Sq. Ft.
Finished Ground Floor		Sq. Ft.
Garage	2100	Sq. Ft.
Deck	364	Sq. Ft.
Screen Porch	236	Sq. Ft.
Front Porch	350	Sq. Ft.
Overall Height	36'-10"	



GROUND FLOOR PLAN



FIRST FLOOR PLAN
Plan No.



SECOND FLOOR PLAN