



OVERVIEW

TOTAL: 3284 Sq. Ft.
BEDROOMS: 4
BATHROOMS: 3.5

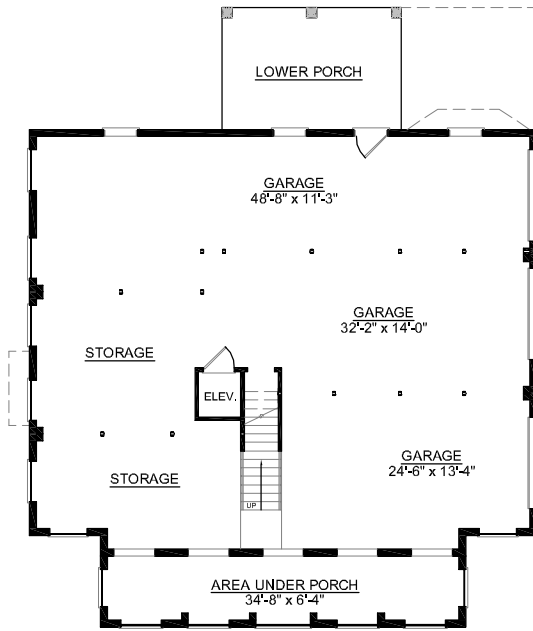
- 9' Ceilings Throughout First Floor; 8' on Second Floor
- Impressive Two Story Foyer Ushers Guests by Formal Dining Room and Quiet Study into Open Great Room with Bridge Above
- Spacious Kitchen and Sunny Breakfast Area Combine with Great Room to Infuse the Home with Light and Space
- Deluxe First Floor Master Suite Features Pampering Bath
- Second Floor Balcony Leads the Way to 3 Spacious Bedrooms
- Convenient Elevator Accessible to All Floors
- 3 Bay Side Entry Garage Complete with Abundant Storage
- See Plan #3621 for Media Room Above Great Room



REAR ELEVATION

First Floor	2105	Sq. Ft.
Second Floor	1179	Sq. Ft.
Finished Ground Floor	---	Sq. Ft.
Garage	2072	Sq. Ft.
Deck	142	Sq. Ft.
Screen Porch	212	Sq. Ft.
Front Porch	252	Sq. Ft.
Overall Height	36'-6"	

FRONT ELEVATION

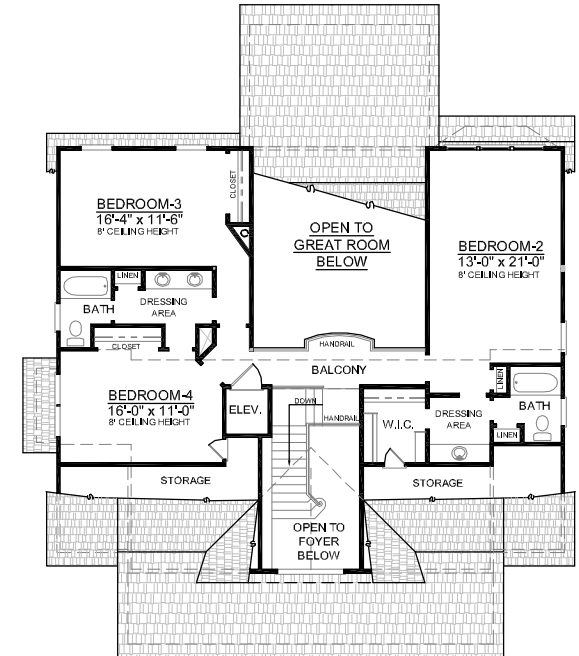


GROUND FLOOR PLAN



FIRST FLOOR PLAN
Plan No.

3284-A



SECOND FLOOR PLAN