



FRONT ELEVATION

OVERVIEW

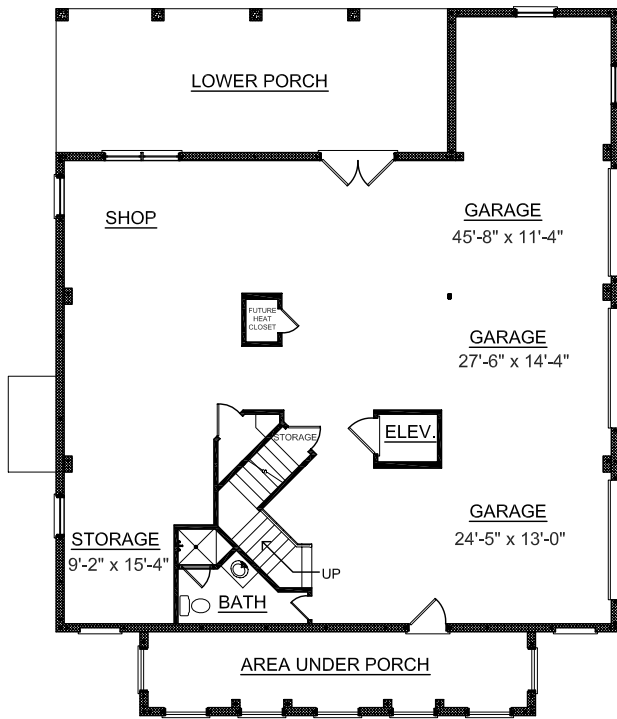
TOTAL: 3296 Sq. Ft.
 BEDROOMS: 3
 BATHROOMS: 3.5

- Two Story Entry with Adjacent Formal Dining Room
- 9' First Floor and Second Floor Ceiling Heights
- 2 Bedrooms with Private Baths on Second Floor
- Second Floor Media Room
- Spacious Kitchen with Large Working Island open to Breakfast Area with Bar Seating
- Centrally Located Great Room with French Sliders leads to Roomy Screen Porch
- Quiet First Floor Master Bedroom with Private Bath and Spacious Walk-in Closets and 72" Whirlpool Tub
- 3 Bay Side Entry Garage with Convenient Elevator

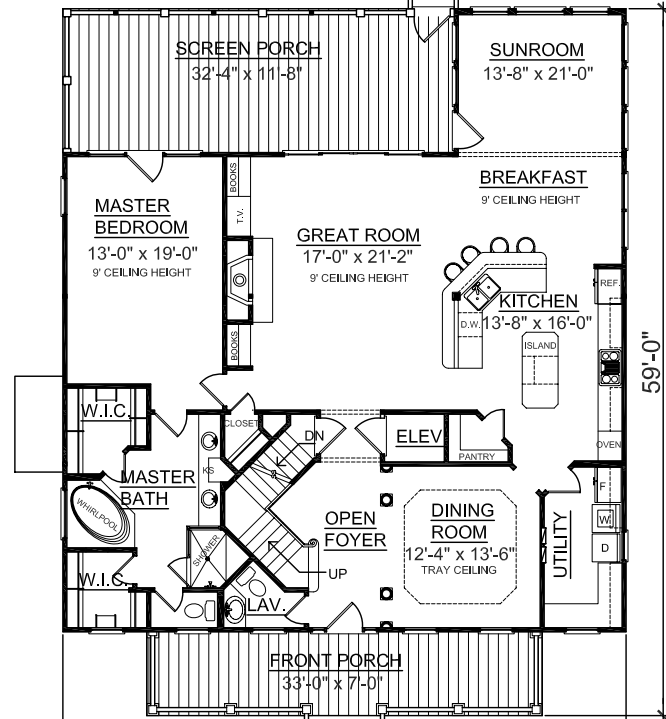


REAR ELEVATION

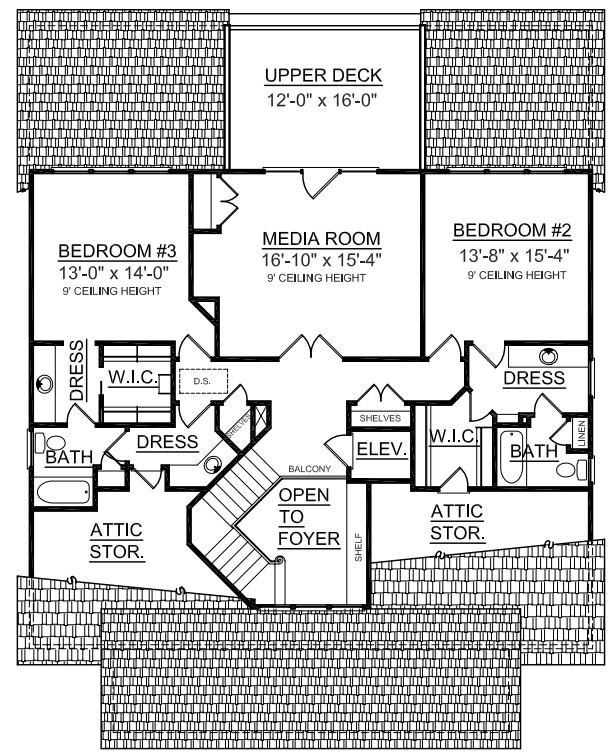
First Floor	2052 Sq. Ft.
Second Floor	1244 Sq. Ft.
Garage	2052 Sq. Ft.
Upper Deck	200 Sq. Ft.
Screen Porch	392 Sq. Ft.
Front Porch	231 Sq. Ft.
Overall Height	34'-4" +/-



GROUND FLOOR PLAN



FIRST FLOOR PLAN



SECOND FLOOR PLAN